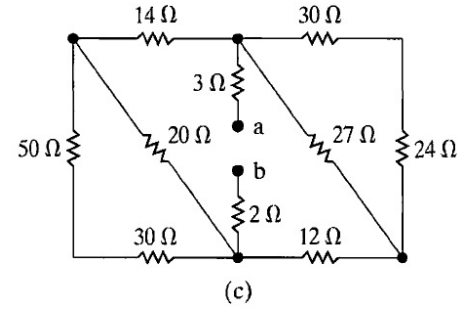
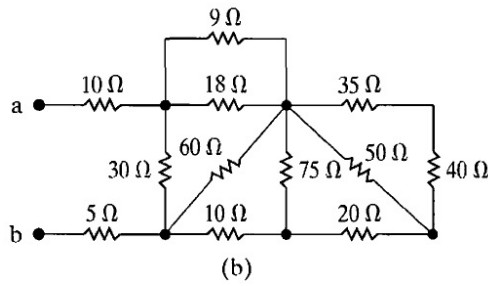
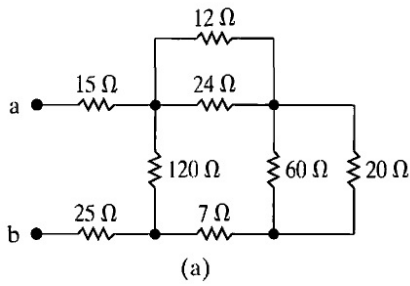


EE 202 (122)- HW2

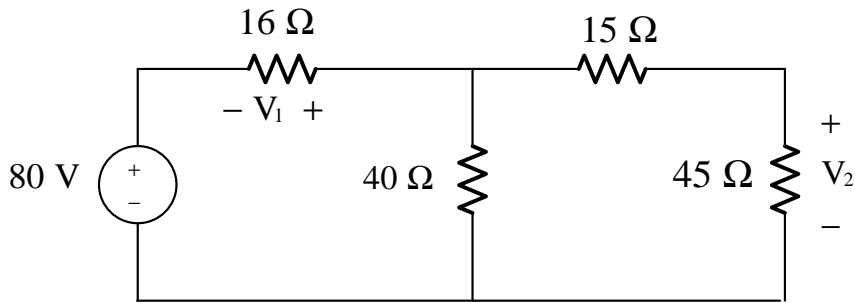
Due Monday 25/2/2013

Dr. Adil S. Balghonaim



Q1 For the circuits shown above , find the equivalent resistant between nodes **a** and **b**

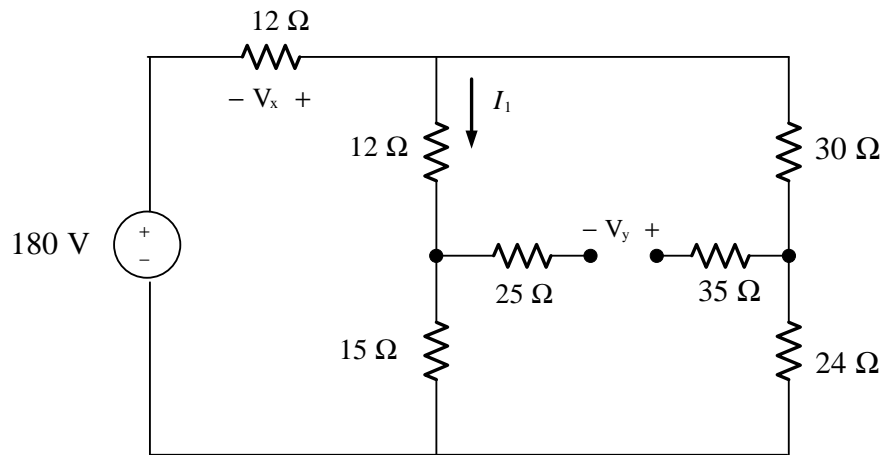
Q2



For the circuit shown above , find the followings:

- (a) V_1 using voltage division method only ?
- (b) V_2 using current division method only ?

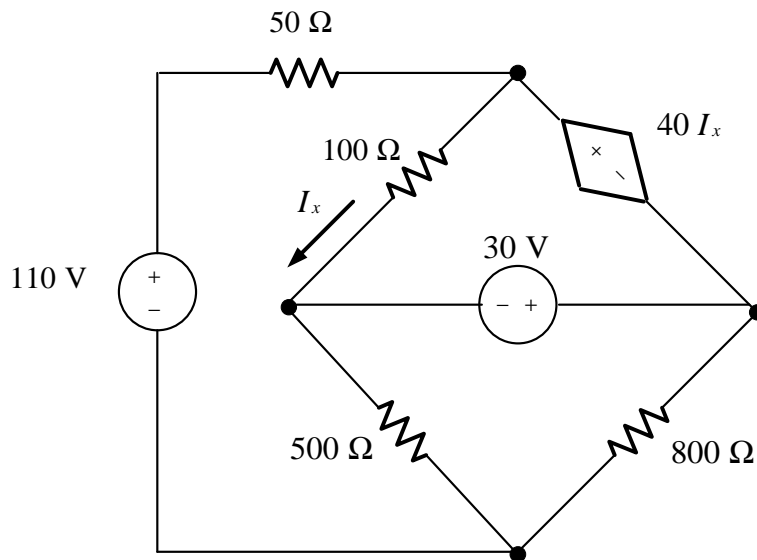
Q3



For the circuit shown above , find the followings:

- (a) V_x **using voltage division method only ?**
- (b) I_1 **using current division method only ?**
- (c) V_y

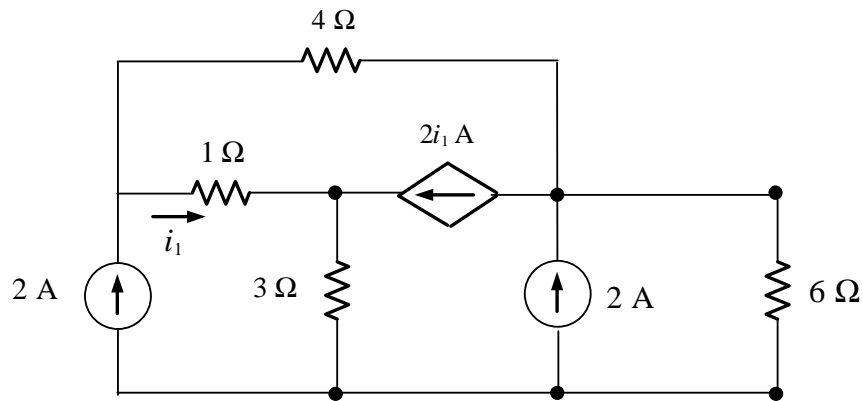
Q4



For the circuit shown above , **using the node voltage method** find the followings :

- (a) The power deliver by the 30 V independent voltage source ?
- (b) The power absorb by the dependent voltage source ?

Q5



For the circuit shown above , **using the Mesh current method** find the followings :

- (a) The power deliver by the dependent current source?
- (b) The power absorb by the 3Ω resistor ?