

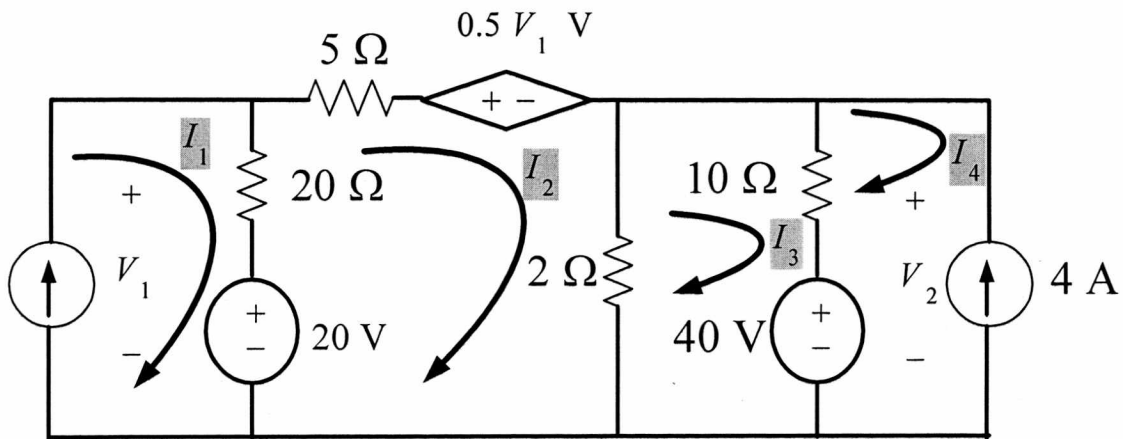
EE 202-Fall 2012(121)

HW3 KEY

Dr. Adil S. Balghonaim

Due 5/11/2012

**Q1**



By Inspection  $I_1 = 2 \text{ A}$   $I_4 = -4 \text{ A}$

$$\text{KVL on Mesh } I_2 \quad -20 + 20(I_2 - I_1) + 5I_2 + 0.5V_1 + 2(I_2 - I_3) = 0$$

$$\text{Since } V_1 = 20(I_1 - I_2) + 20 \quad I_1 = 2 \text{ A} \Rightarrow 17I_2 - 2I_3 = 30 \quad \text{-----(1)}$$

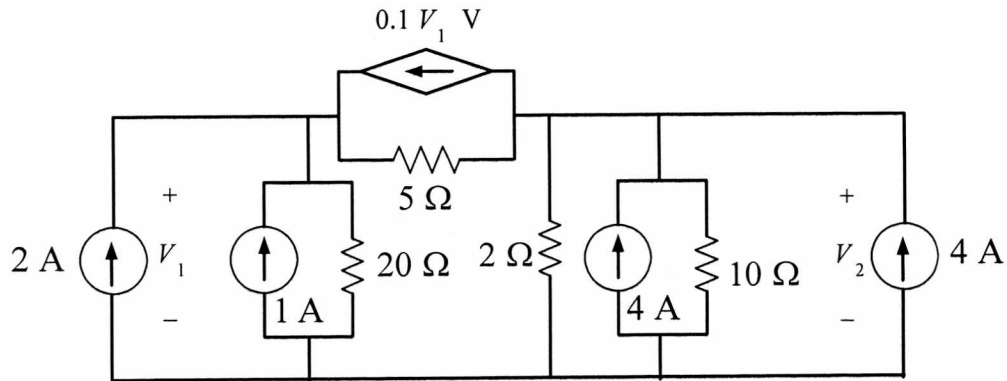
$$\text{KVL on Mesh } I_3 \quad 2(I_3 - I_2) + 10(I_3 - I_4) + 40 = 0$$

$$\text{Since } I_4 = -4 \text{ A} \Rightarrow -2I_2 + 12I_3 = -80 \quad \text{-----(2)}$$

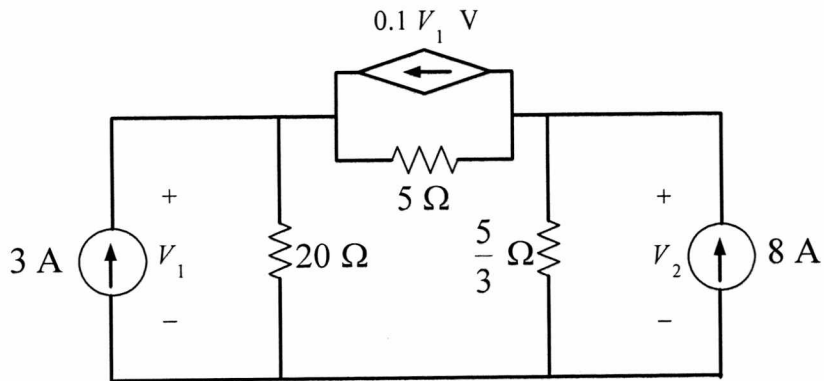
$$\text{Solving (1) and (2)} \Rightarrow I_2 = 1 \text{ A} \quad I_3 = -6.5 \text{ A}$$

$$P_{2\Omega} = 2(I_2 - I_3)^2 = 2(1 + 6.5)^2 = 112.5 \text{ W}$$

**Q2 Step 1: Source Transform the voltage sources**

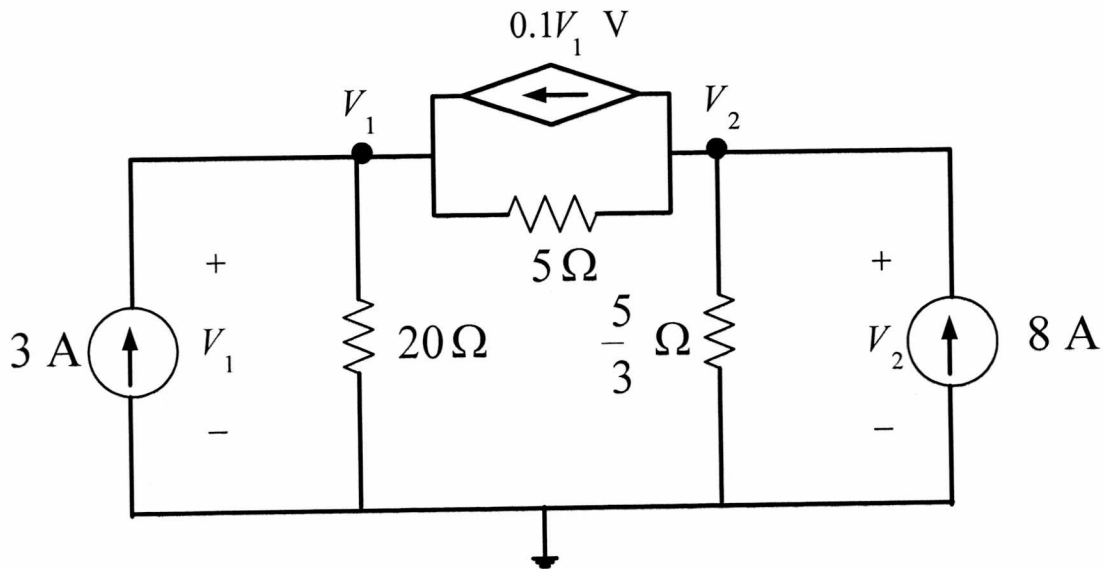


**Step 2: Combine the currents sources and parallel resistors**



**Note :** you can not transform the currents sources because that will destroy the required voltages namely  $V_1$ ,  $V_2$

**Step 3 :** Solve the remaining circuit using nodal analysis



KCL on the two nodes  $V_1, V_2$ , we have

$$\frac{V_1}{20} + \frac{V_1 - V_2}{5} - 0.1V_1 - 3 = 0$$

$$\Rightarrow 0.15V_1 - 0.2V_2 = 3 \text{ -----(1)}$$

$$\frac{V_2}{5/3} + \frac{V_2 - V_1}{5} + 0.1V_1 - 8 = 0$$

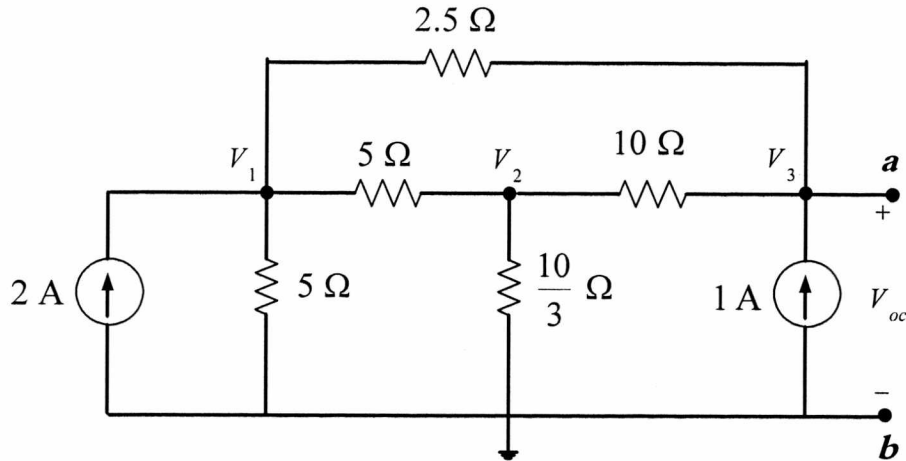
$$\Rightarrow -0.1V_1 + 0.8V_2 = 8 \text{ -----(2)}$$

$$\Rightarrow \begin{bmatrix} 0.15 & -0.2 \\ -0.1 & 0.8 \end{bmatrix} \begin{bmatrix} V_1 \\ V_2 \end{bmatrix} = \begin{bmatrix} 3 \\ 8 \end{bmatrix}$$

Solving  $\Rightarrow V_1 = 40 \text{ V} \quad V_2 = 15 \text{ V}$

**Q3**

(a) Using Nodal Analysis were  $V_{oc} = V_3$



KCl on the three nodes  $V_1, V_2, V_3$

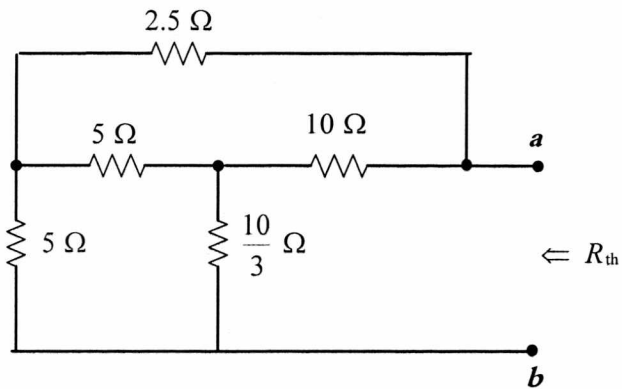
$$\frac{V_1}{5} + \frac{V_1 - V_2}{5} + \frac{V_1 - V_3}{2.5} - 2 = 0 \Rightarrow 0.8V_1 - 0.2V_2 - 0.4V_3 = 2 \text{ ----(1)}$$

$$\frac{V_2 - V_1}{5} + \frac{V_2 - V_3}{10} + \frac{V_2}{10/3} = 0 \Rightarrow -0.2V_1 + 0.6V_2 - 0.1V_3 = 0 \text{ ----(2)}$$

$$\frac{V_3 - V_2}{10} + \frac{V_3 - V_1}{2.5} - 1 = 0 \Rightarrow -0.4V_1 - 0.1V_2 + 0.5V_3 = 1 \text{ ----(3)}$$

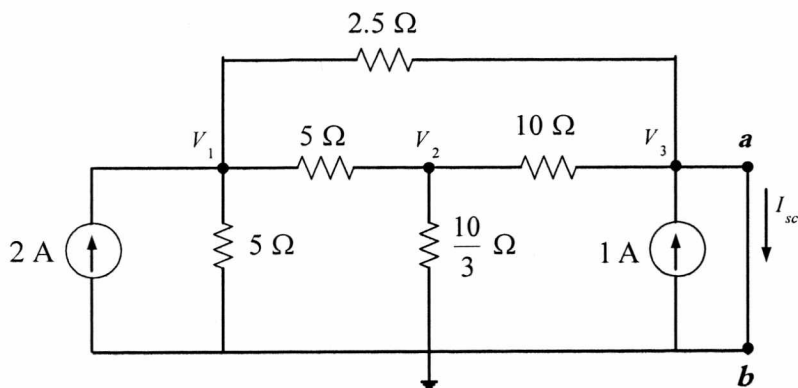
$$\begin{bmatrix} 0.8 & -0.2 & -0.4 \\ -0.2 & 0.6 & -0.1 \\ -0.4 & -0.1 & 0.5 \end{bmatrix} \begin{bmatrix} V_1 \\ V_2 \\ V_3 \end{bmatrix} = \begin{bmatrix} 2 \\ 0 \\ 1 \end{bmatrix} \quad \text{Solving } \Rightarrow V_{oc} = V_3 = 9.6 \text{ V}$$

To find  $R_{th}$ , we deactivate all independent sources



Since the resistors can not be combined as series and parallel, we then find  $R_{th}$

$R_{th} = \frac{V_{oc}}{I_{sc}}$ . We already have  $V_{oc}$ , we then seek  $I_{sc}$  as follows:



Here  $V_3 = 0$ , KCl on the two nodes  $V_1, V_2$

$$\frac{V_1}{5} + \frac{V_1 - V_2}{5} + \frac{V_1 - V_3}{2.5} - 2 = 0 \Rightarrow 0.8V_1 - 0.2V_2 = 2 \quad \text{---(1)}$$

$$\frac{V_2 - V_1}{5} + \frac{V_2 - V_3}{10} + \frac{V_2}{10/3} = 0 \Rightarrow -0.2V_1 + 0.6V_2 = 0 \quad \text{---(2)}$$

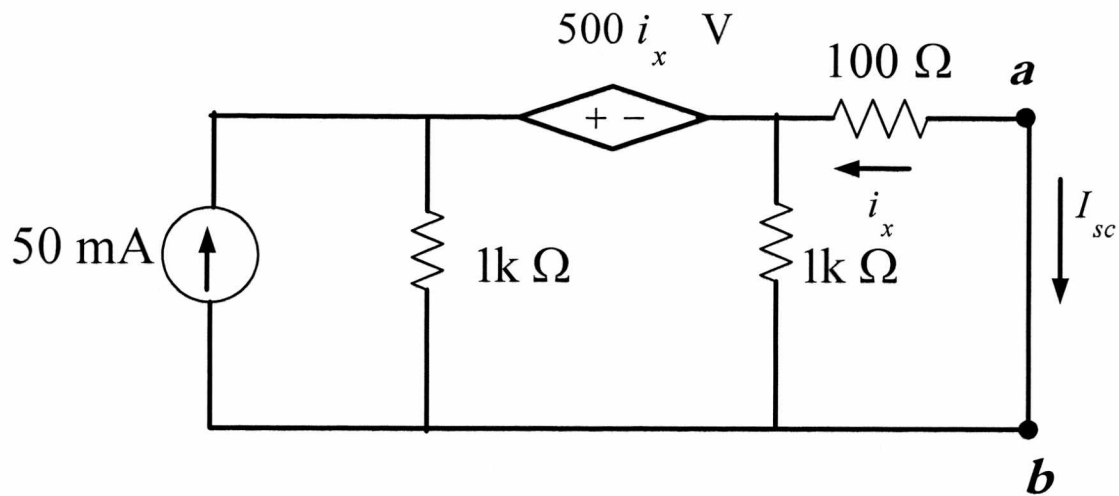
$$\begin{bmatrix} 0.8 & -0.2 \\ -0.2 & 0.6 \end{bmatrix} \begin{bmatrix} V_1 \\ V_2 \end{bmatrix} = \begin{bmatrix} 2 \\ 0 \end{bmatrix} \quad \text{Solving} \Rightarrow V_1 = 2.73 \text{ V} \quad V_2 = 0.91 \text{ V}$$

$$\frac{V_1 - V_3}{2.5} + \frac{V_2 - V_3}{10} + 1 = I_{sc} \Rightarrow \frac{2.73}{2.5} + \frac{0.91}{10} + 1 = I_{sc} \Rightarrow I_{sc} = 2.183 \Rightarrow R_{th} = \frac{V_{oc}}{I_{sc}} = \frac{9.6}{2.183} = 4.4 \Omega$$

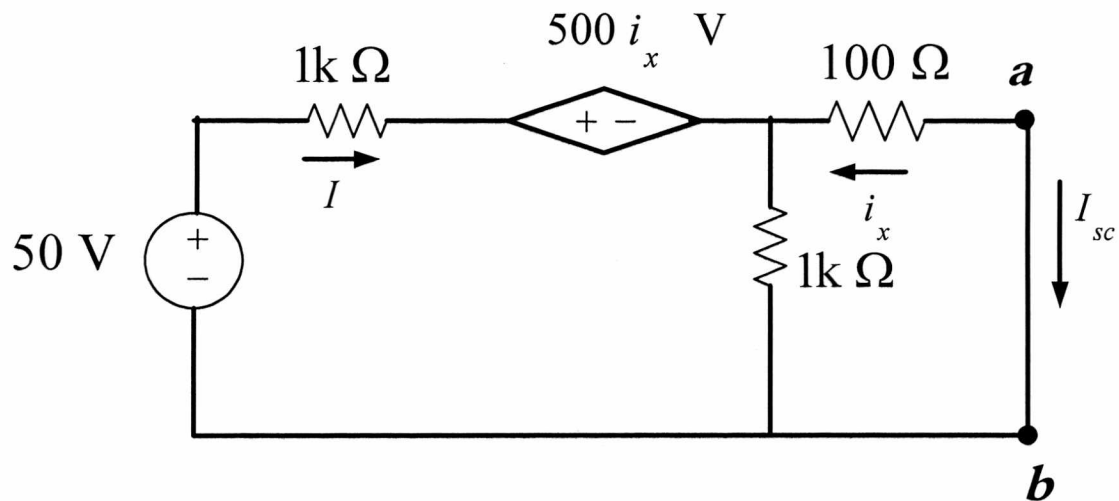
(b)  $R_L = R_{TH} = 4.4 \Omega$

(c)  $P_{max} = \frac{V_{oc}^2}{4R_{TH}} = \frac{9.6^2}{4(4.4)} = 5.24 \text{ W}$

**Q4**



Source Transformation



KVL on the outer loop

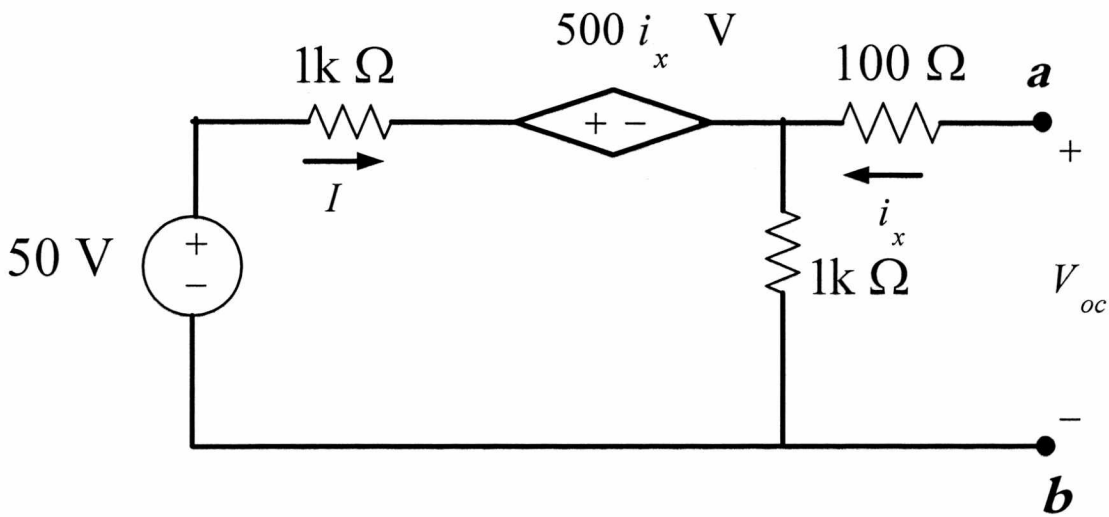
$$-50 + 1000I + 500i_x - 100i_x = 0 \Rightarrow 1000I + 400i_x = 50 \quad \text{--- (1)}$$

KVL on the inner loop

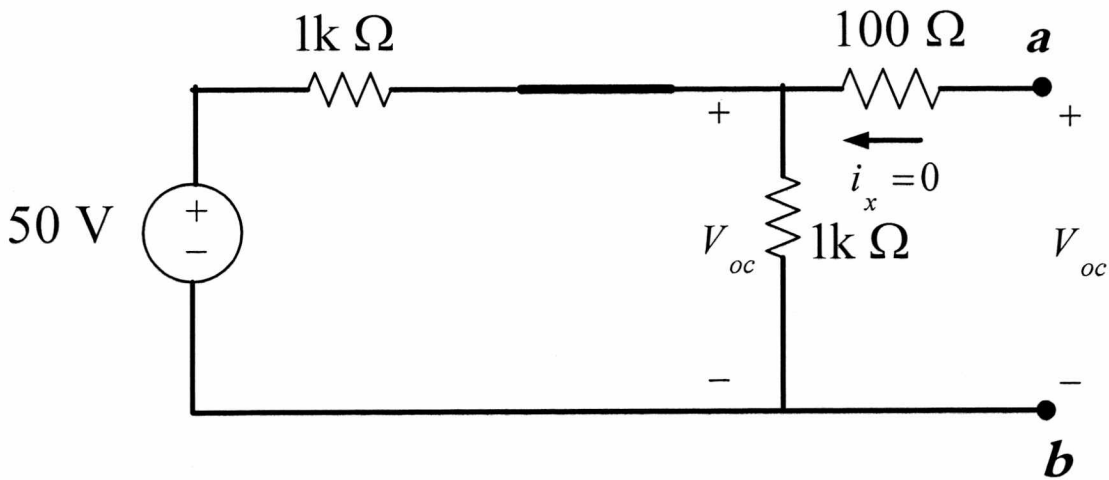
$$-1000(I + i_x) - 100i_x = 0 \Rightarrow 1000I + 1100i_x = 0 \quad \text{--- (2)}$$

Solving (1) and (2) for  $i_x = -\frac{1}{14} \text{ A} \Rightarrow I_{sc} = -i_x = \frac{1}{14} \text{ A}$

**Finding  $R_{th}$**  : Since the circuit has a dependent source we cannot find  $R_{th}$  by combining resistors . We find  $R_{th}$  as  $R_{th} = \frac{V_{oc}}{I_{sc}}$  . Therefore we seek  $V_{oc}$  as follows :



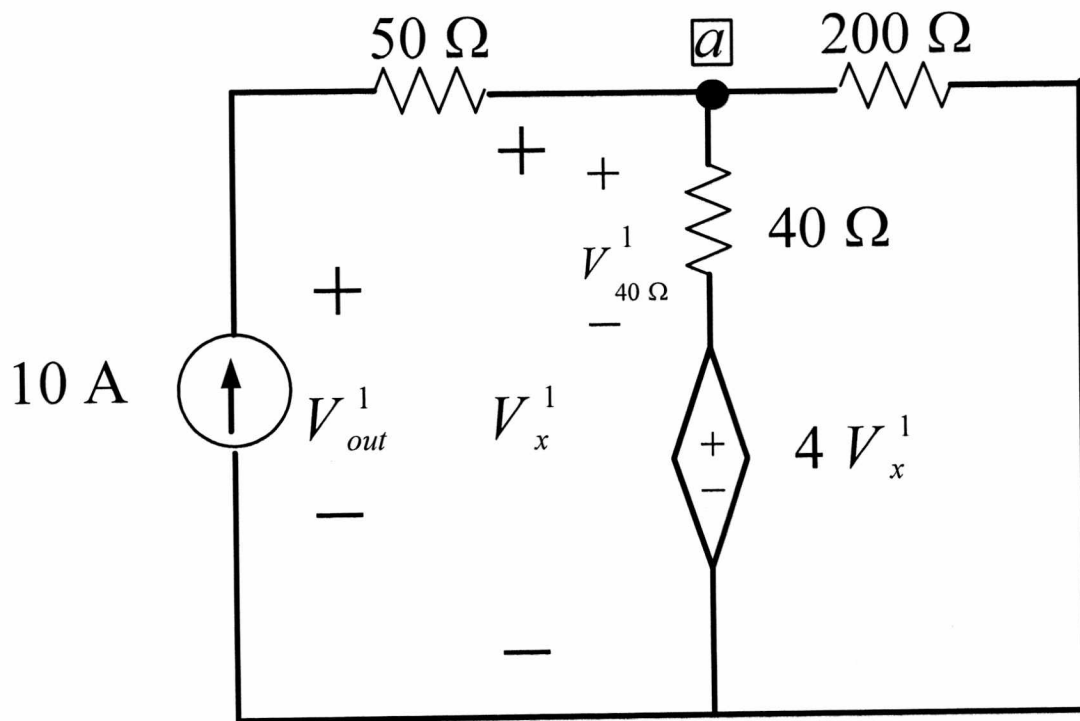
Here  $i_x = 0$  which implies also that the dependent source  $500i_x = 0$



$$V_{oc} = \frac{1k}{1k + 1k} (50) = 25 \text{ V}$$

$$\Rightarrow R_{th} = \frac{V_{oc}}{I_{sc}} = \frac{25}{1/14} = 350 \text{ } \Omega$$

**Q5 Step 1 : Deactivate the independent voltage source**



Apply KCL at node a

$$\frac{V_x^1}{200} + \frac{V_{40\Omega}^1}{40} - 10 = 0 \quad \text{----(1)}$$

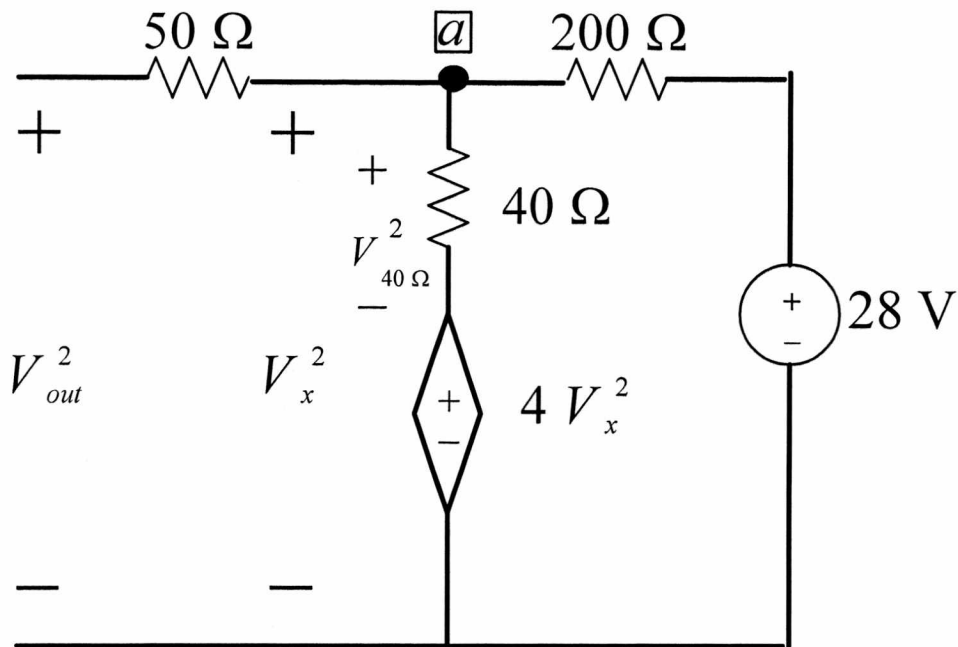
$$\text{Since } V_{40\Omega}^1 = V_x^1 - 4V_x^1 = -3V_x^1$$

$$(1) \Rightarrow \frac{V_x^1}{200} + \frac{-3V_x^1}{40} - 10 = 0 \Rightarrow V_x^1 = -\frac{1000}{7} = -142.857 \text{ V}$$

$$\text{KVL} \Rightarrow -V_{out}^1 + 50(10) + V_x^1 = 0 \Rightarrow V_{out}^1 = \frac{2500}{7} = 357.143 \text{ V}$$



**Step 2 : Deactivate the independent current source**



Apply KCL at node a

$$\frac{V_x^2 - 28}{200} + \frac{V_{40\Omega}^2}{40} = 0 \quad \text{----(2)}$$

$$\text{Since } V_{40\Omega}^2 = V_x^2 - 4V_x^2 = -3V_x^2$$

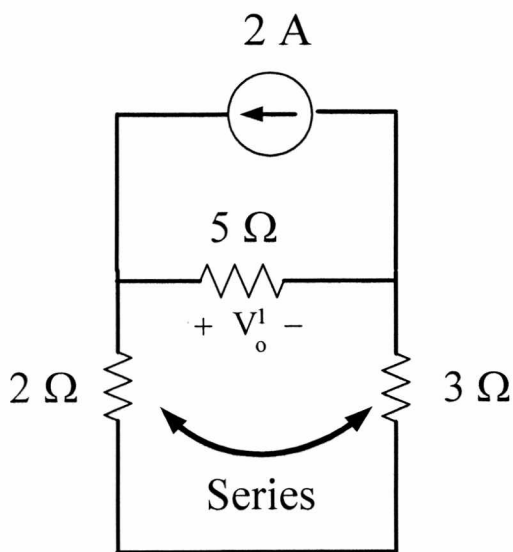
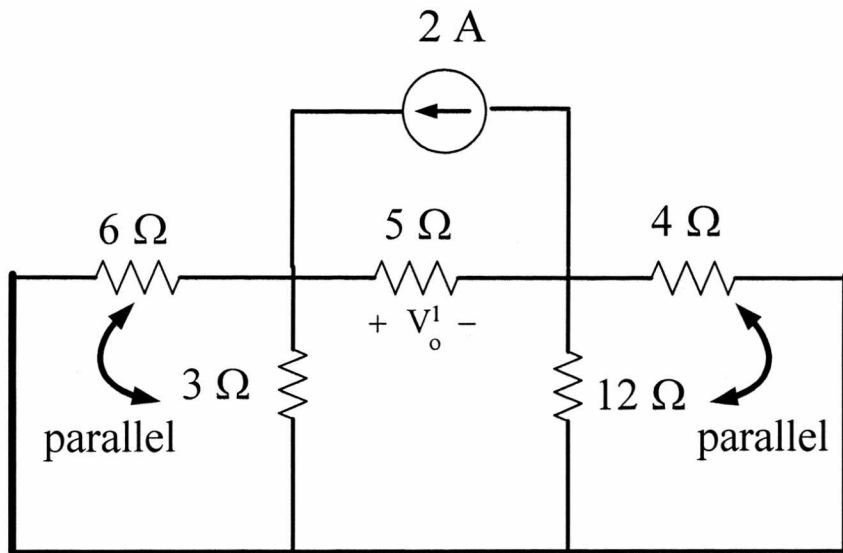
$$(2) \Rightarrow \frac{V_x^2 - 28}{200} + \frac{-3V_x^2}{40} = 0 \Rightarrow V_x^2 = -2 \text{ V}$$

$$V_{out}^2 = V_x^2 = -2 \text{ V}$$

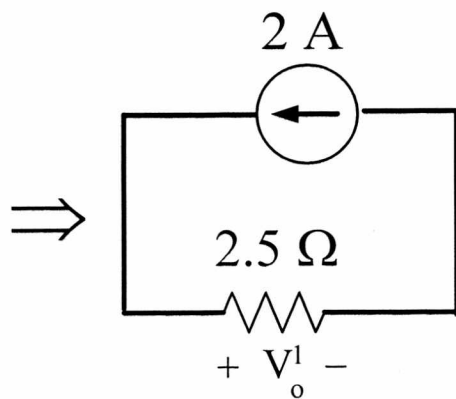
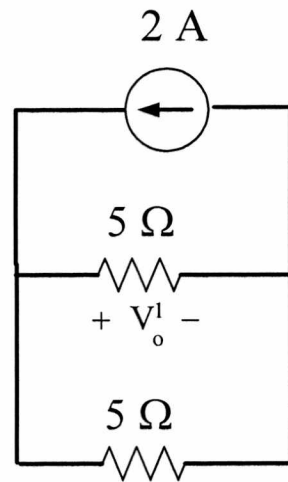
**Step 3 : Combine the results in step 1 and step 2**

$$V_{out} = V_{out}^1 + V_{out}^2 = 357.143 + (-2) = 355.143 \text{ V}$$

**Q6 Step 1 : Deactivate the independent voltage sources**

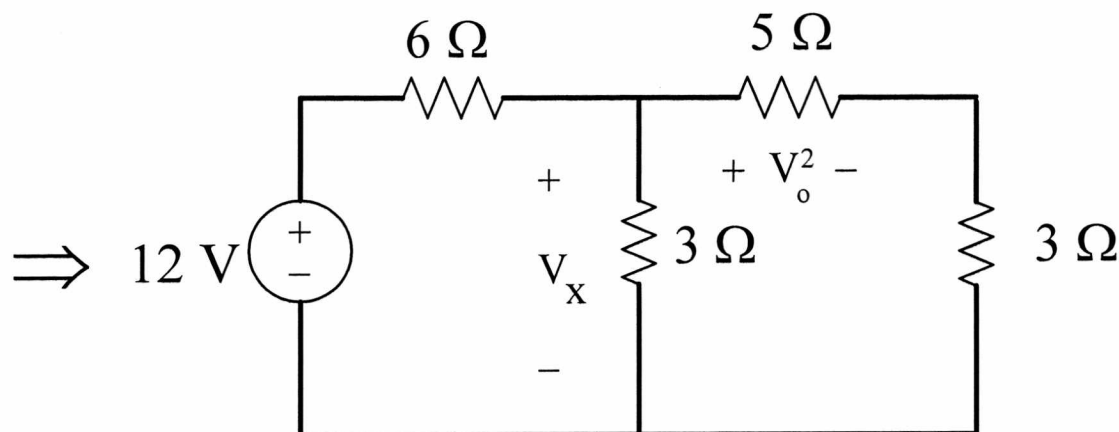
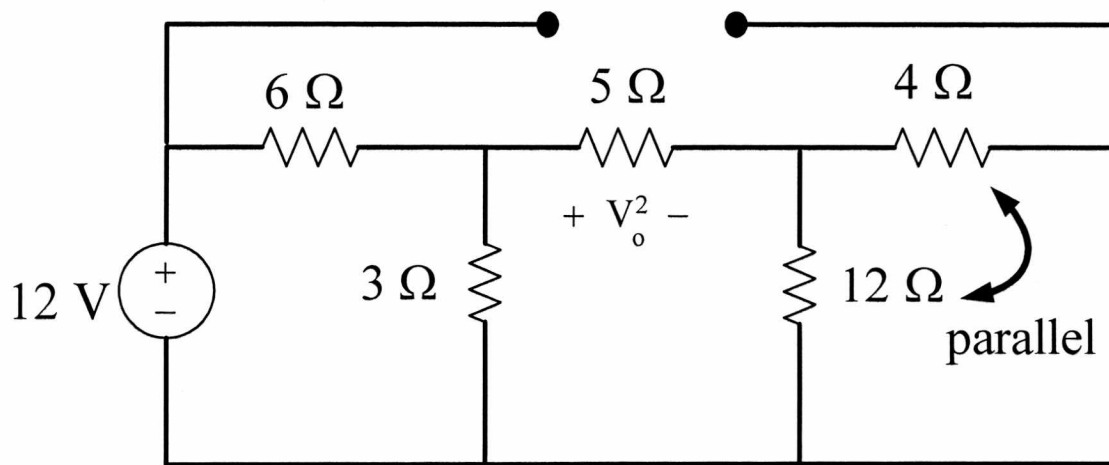


$\Rightarrow$



$$V_o^1 = (2.5)(2) = 5 \text{ V}$$

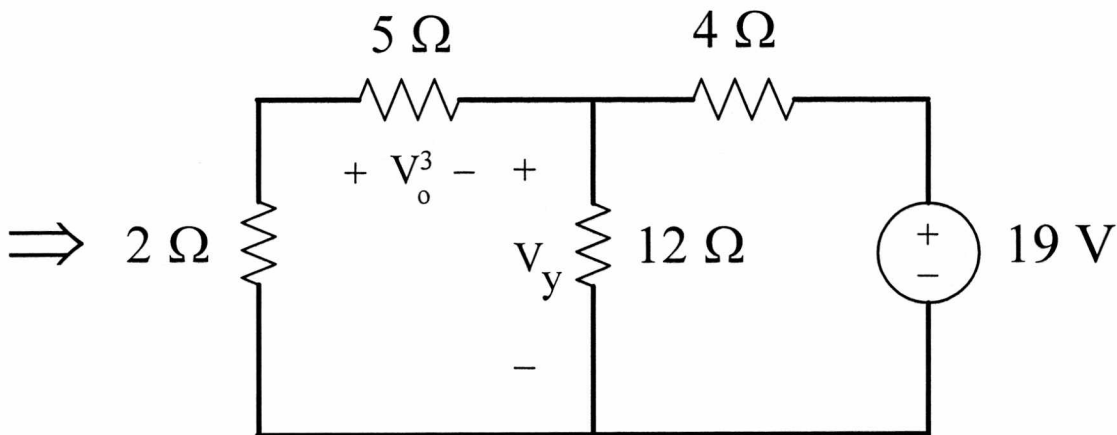
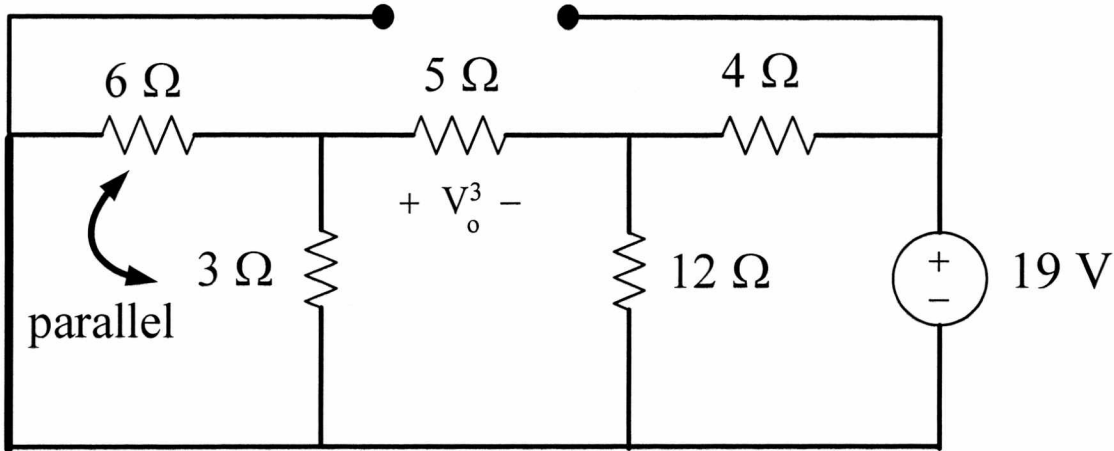
**Step 2 : Deactivate the 19 V independent voltage source and the the 2 A V independent current source**



$$V_x = \frac{3 \parallel (5+3)}{6+3 \parallel (5+3)} 12 = \frac{16}{5} = 3.2 \text{ V}$$

$$V_o^2 = \frac{5}{5+3} V_x = \left(\frac{5}{8}\right) \left(\frac{16}{5}\right) = 2 \text{ V}$$

**Step 2 : Deactivate the 12 V independent voltage source and the 2 A V independent current source**



$$V_Y = \frac{12 \parallel (5+2)}{4+12 \parallel (5+2)} 19 = \frac{399}{40} = 9.975 \text{ V}$$

$$V_o^3 = -\frac{5}{5+2} V_Y = -\left(\frac{5}{7}\right)\left(\frac{399}{40}\right) = -\frac{57}{8} = -7.125 \text{ V}$$

$$V_o = V_o^1 + V_o^2 + V_o^3 = 5 + 2 + (-7.125) = -0.125 \text{ V} = -125 \text{ mV}$$