

King Fahd University of Petroleum and Minerals

Prep-Year Math Program

Math 001 - Term 141

Recitation (3.5)

Answered by S. Omar

Question 1: Find all asymptotes of $F(x) = \frac{-1}{x-2} + 1$

Answer: Equation of vertical asymptotes is: $x = 2$

Equation of horizontal asymptotes is: $y = 1$

Question 2: If $y = 2$ is a horizontal asymptote for the graph of

$$F(x) = \frac{Ax + 2}{3x - A}$$

a) Find the value of A. **Answer:** $A = 6$

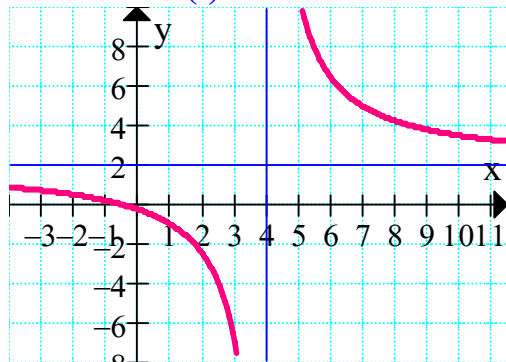
b) Find the vertical asymptote. **Answer:** $x = 2$

Question 3: Sketch the graph of the following functions

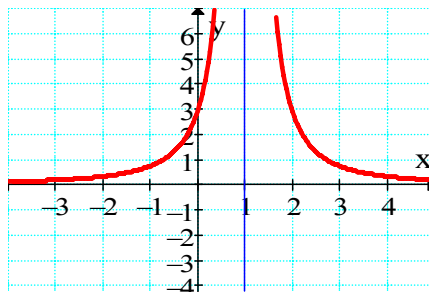
(i): $F(x) = \frac{2x + 1}{x - 4}$

(ii): $F(x) = \frac{3}{x^2 - 2x + 1}$

Answer: (i):



(ii):



Question 4: Which one of the following functions has the graph given below?

a) $f(x) = \frac{2-x}{3-x}$

b) $f(x) = \frac{2-3x}{4-x}$

c) $f(x) = \frac{x-2}{4-x}$

d) $f(x) = \frac{6-3x}{4-x}$

e) $f(x) = \frac{3x-12}{4x-16}$

Answer: d) $f(x) = \frac{6-3x}{4-x}$

