

# UML-based Web Engineering

ABDULHAMED AL-FALEH  
243606

## •What is UWE?

- UWE is a software engineering approach for the Web domain aiming to cover the whole life-cycle of Web application development.
- lightweight" extension of the Unified Modelling Language (UML) providing a so called UML Profile for the Web domain

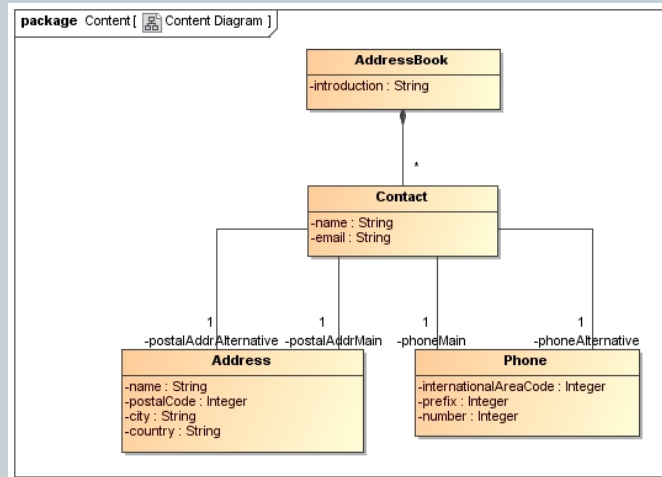
## •Features

- UML-based
- model-driven methodology
- tool support for the systematic design
- tool support for the (semi-)automatic generation of Web applications

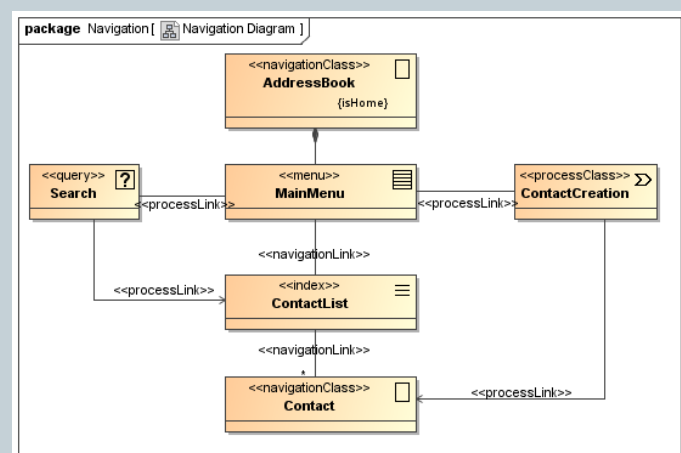
## •Diagrams

- Use Case Diagram
- Class Diagram
- Communication Diagram
- Sequence Diagram
- State Machine Diagram
- Protocol State Machine Diagram
- Activity Diagrams
- Process Structure Diagram
- Composite Structure Diagram
- Process Flow Diagram
- Implementation Diagram
- Content Diagram
- Navigation Diagram
- Presentation Diagram

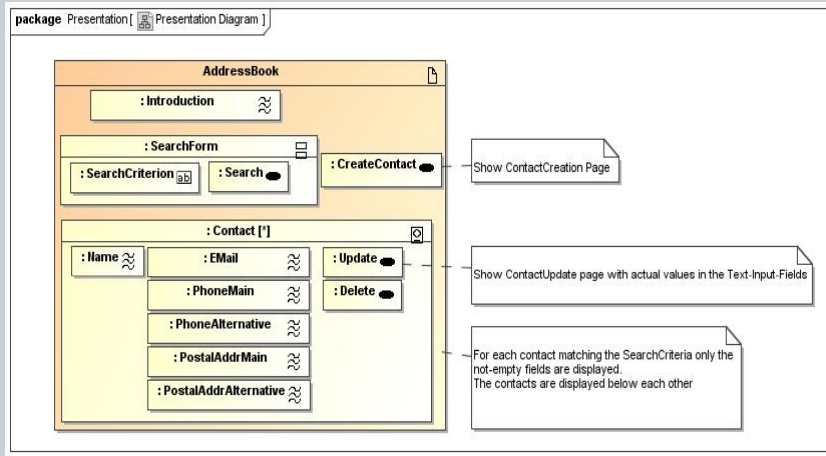
## • Content Diagram



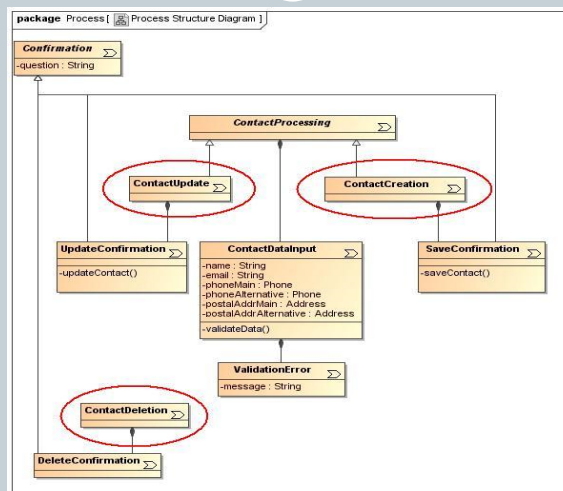
## • Navigation Model



## • Presentation Model



## • Process Model



## •Tools

- [ArgoUWE](#) plug-in (argoUML)
- [MagicUWE](#) plug-in (MagicDraw)

END