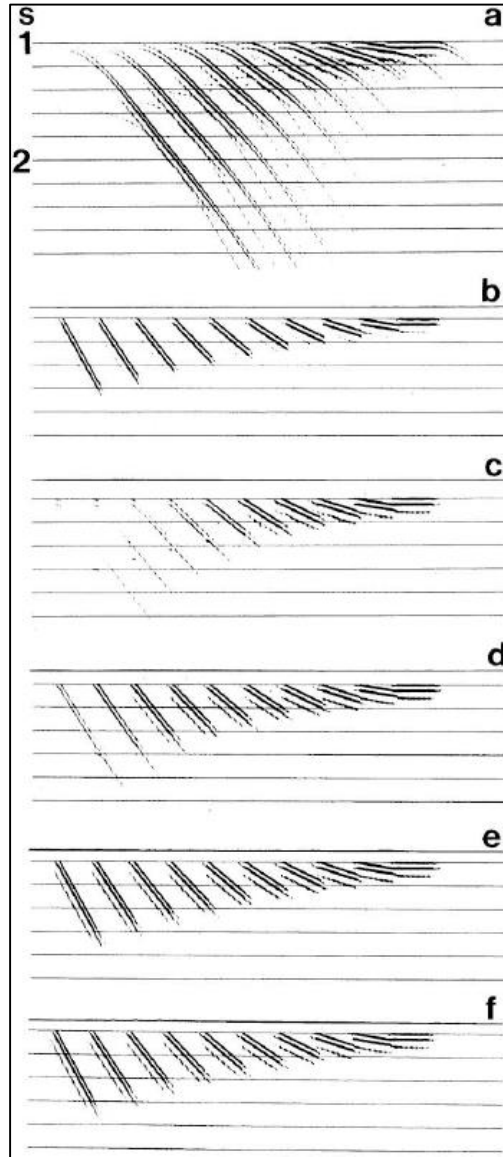
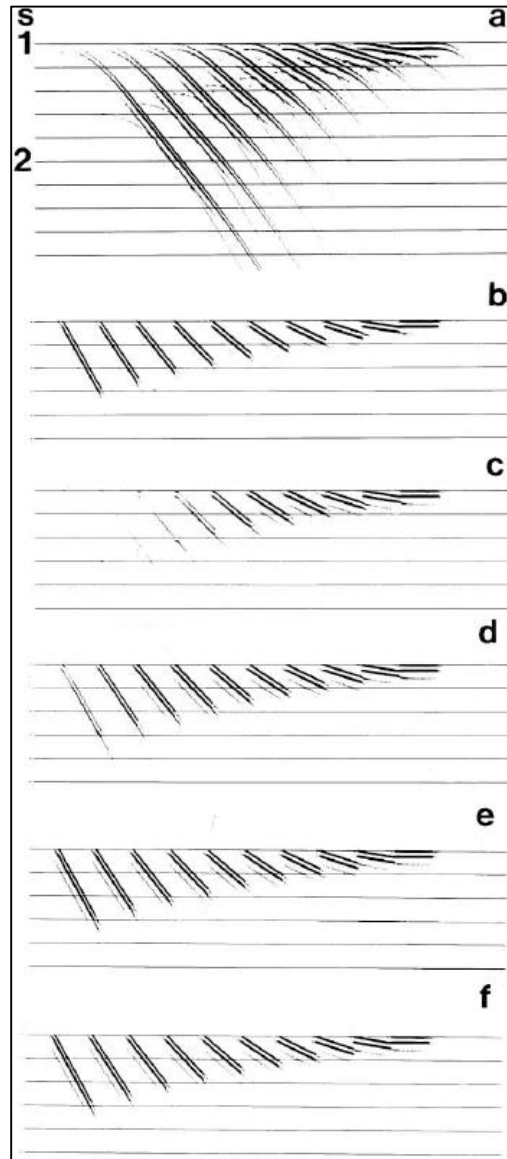


Tests for aperture width in Kirchhoff migration



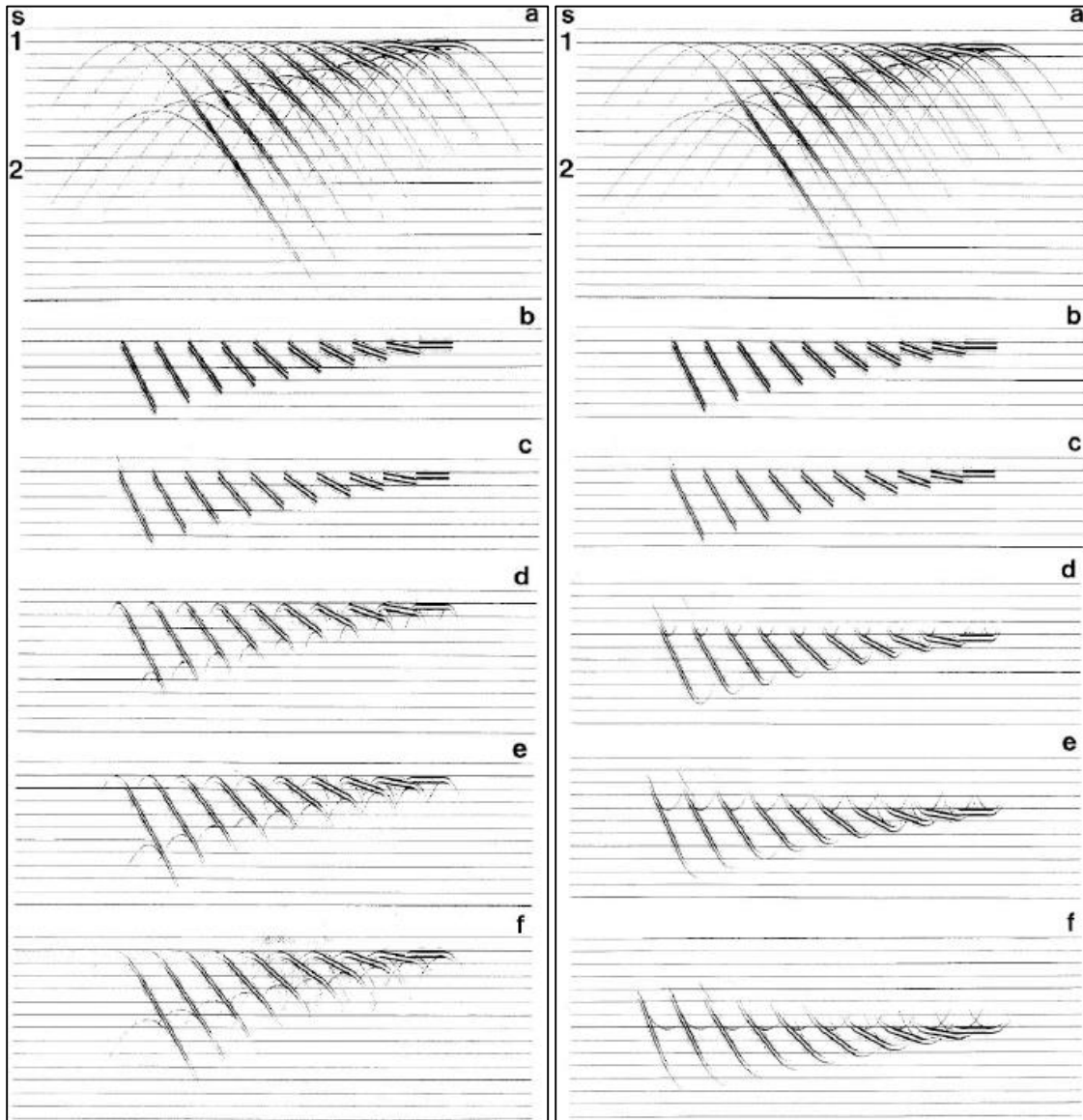
(a) a zero-offset section that contains dipping events with 3500-m/s velocity, (b) desired migration using the phase-shift method; Kirchhoff migration using (c) 35-trace, (d) 70-trace, (e) 150-trace, and (f) 256-trace half-aperture width (Yilmaz, 2001).

Tests for maximum dip to migrate in Kirchhoff migration



(a) a zero-offset section that contains dipping events with 3500-m/s velocity, (b) desired migration; Kirchhoff migration using (c) 4-ms/trace, (d) 8-ms/trace, (e) 12-ms/trace, and (f) 24-ms/trace maximum dip (Yilmaz, 2001).

Tests for velocity errors in Kirchhoff migration



(a) a zero-offset section that contains dipping events with 3500-m/s velocity, (b) desired migration; Kirchhoff migration using (c) the medium velocity of 3500 m/s, (d) 5 percent lower, (e) 10 percent lower, and (f) 20 percent lower velocity (Yilmaz, 2001).

(a) a zero-offset section that contains dipping events with 3500-m/s velocity, (b) desired migration; Kirchhoff migration using (c) the medium velocity of 3500 m/s, (d) 5 percent higher, (e) 10 percent higher, and (f) 20 percent higher velocity (Yilmaz, 2001).