

GEOP 501 - Fall 2017 - HW # 4 - (Due on 29/10/2017)

1. Given Figures 1-3 of migrated stacked sections [60 points]:
 1. Indicate a location of a good petroleum fault trap.
 2. Indicate the fault type.

Figure 1

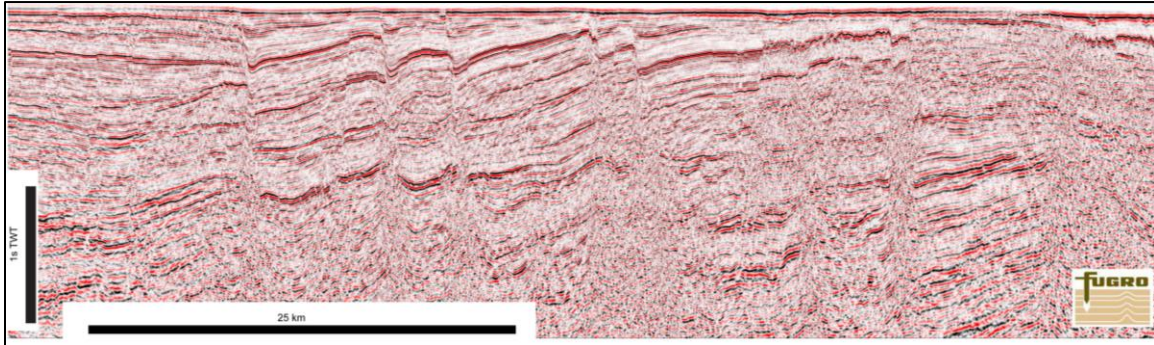
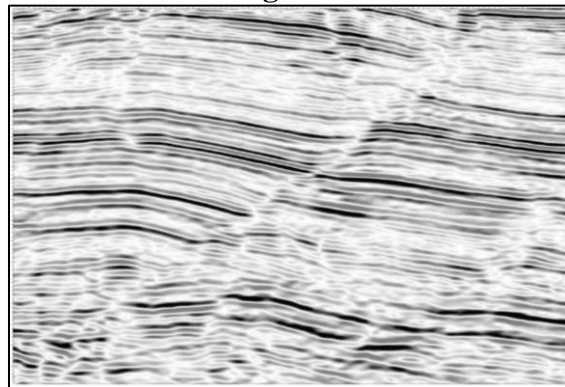


Figure 2

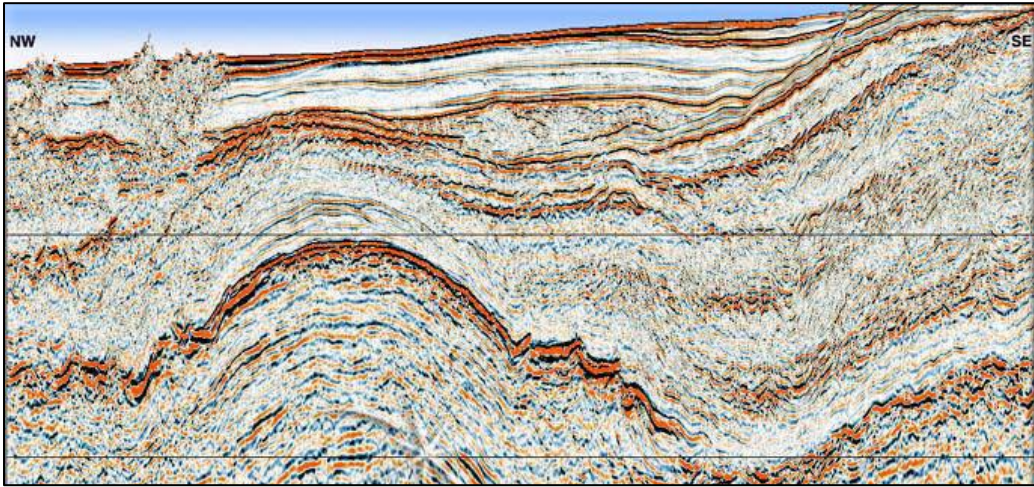


Figure 3



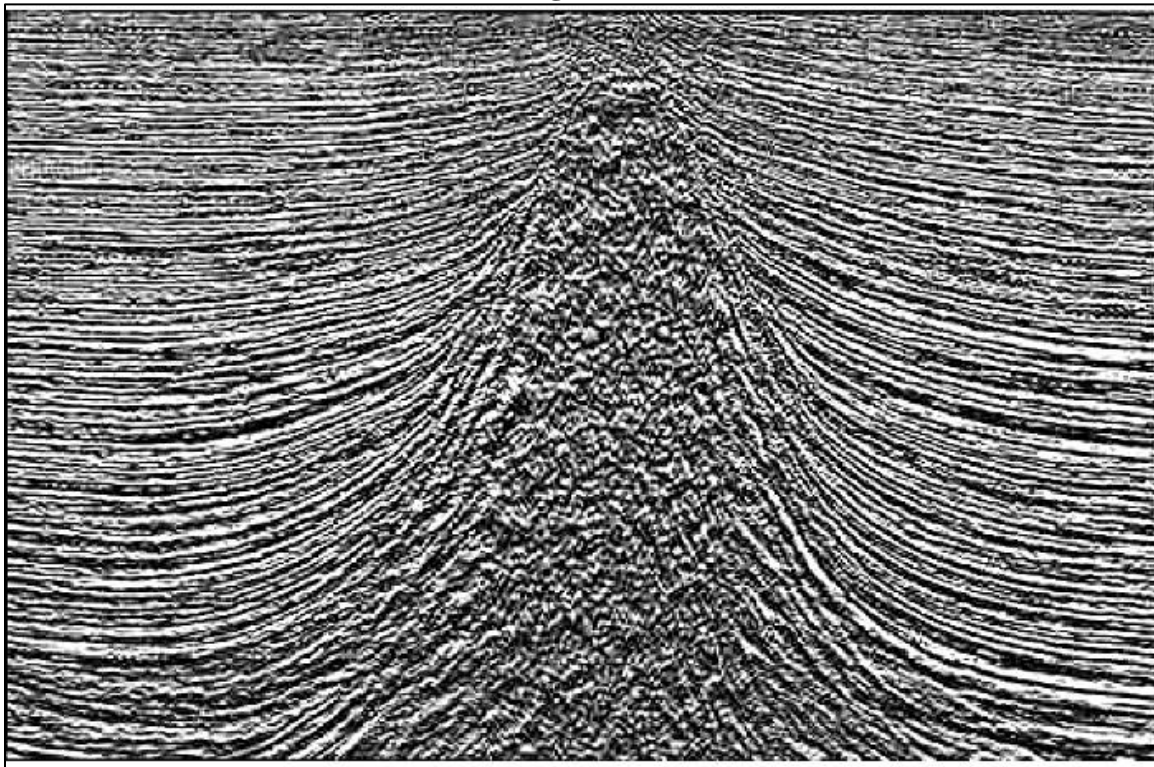
2. Given Figure 4 of a migrated stacked section, indicate a location of a good petroleum fold trap. [10 points]

Figure 4



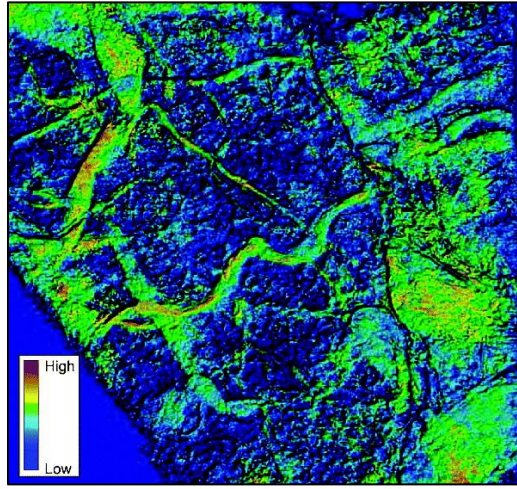
3. Given Figure 5 of a migrated stacked section, indicate a location of a good petroleum diapir trap. [10 points]

Figure 5



4. Given Figure 6 of a 3D migrated stacked time slice, indicate a location of a good petroleum channel trap. [10 points]

Figure 6



5. Given Figure 7 of a migrated stacked section, indicate a location of a good petroleum unconformity trap. [10 points]

Figure 7

