

KING FAHD UNIVERSITY OF PETROLEUM & MINERALS

ELECTRICAL ENGINEERING DEPARTMENT

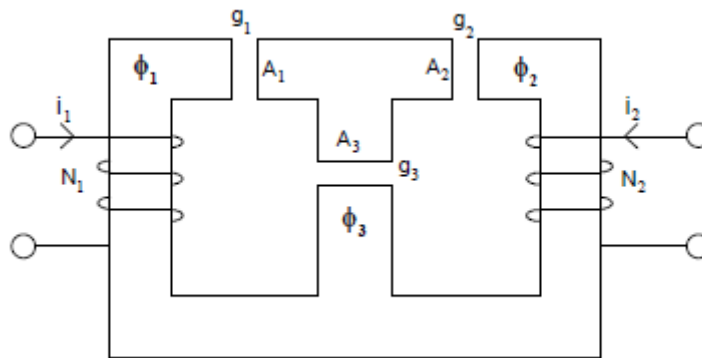
Dr. Ibrahim O. Habiballah

EE-306

Key Solution

Quiz 2b Sec.: I.D.: Ser#: Name:

Consider the uniform shell core shown below. Assume the number of turns $N_1 = N_2$; length of air-gaps $g_1 = g_2 = g_3$; and cross-sectional areas $A_1 = A_2 = A_3$. Let $i_1 = 2i_2$.



Q.1 The flux in the central-leg is flowing from bottom up. (2-points)

- a. True.
- b. False.

Q.2 The flux density in upper-left air-gap is larger than that in upper-right air-gap. (3-points)

- a. True.
- b. False.

Q.3 The flux density in upper-right air-gap is smaller than that in central air-gap. (3-points)

- a. True.
- b. False.

Q.4 The reluctances of the left and right legs are identical. (2-points)

- a. True.
- b. False.