

KING FAHD UNIVERSITY OF PETROLEUM & MINERALS
ELECTRICAL ENGINEERING DEPARTMENT

Dr. Ibrahim O. Habiballah

EE-306 (Sec. 3)

Key Solution

Quiz # 4 Serial #

Name:

I.D.#

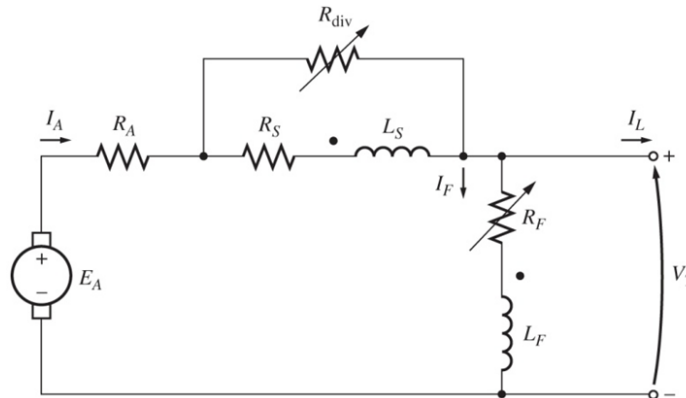
Circle the correct answer.

1) The terminal voltage in all DC generators can be controlled by shunt-field resistance (3 Marks)

- a- except the separately DC generator.
- b- except the compounded DC generator.
- c- except the shunt DC generator.

d- except the series DC generator.

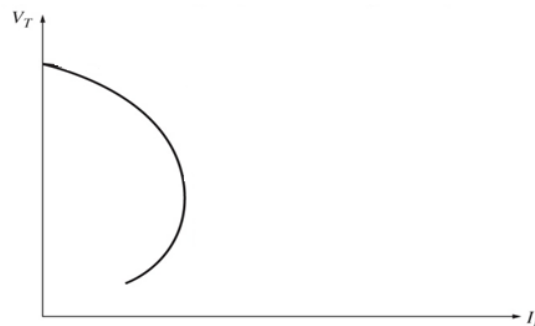
2) If the diverter resistance is set to zero, the machine will act as (4 Marks)



- a- a cumulative over-compound DC generator.
- b- a series DC generator.
- c- a shunt DC motor

d- a shunt DC generator.

3) The figure shown below is (3 Marks)



- a. the torque-speed characteristic for a series DC motor.
- b. the torque-speed characteristic for a long-shunt differential compound DC motor.
- c. the terminal characteristic for a series DC generator.

d. the terminal characteristic for a long-shunt differential compound DC generator.