

# A 3 to 5 GHz UWB SiGe HBT Low Noise Amplifier

Farid Touati  
Department of Electrical and  
Computer Engineering Sultan  
Qaboos Univeristy, Al-Khod,  
Muscat, Oman  
touatif@squ.edu.om

Mourad Loulou  
Ecole Nationale d'Ingenieurs de  
Sfax, Tunisie  
Mourad.Loulou@enis.rnu.tn

Mohammad Bouzid  
Ecole Nationale d'Ingenieurs de  
Sfax, Tunisie  
bouzid.med@tunet.tn

**Abstract**—Ultra-wideband low-noise amplifiers (UWB LNA) operating in the low-frequency band (3.1–5 GHz) of UWB spectrum are presented. The designs consist of a cascode amplifier with wideband input matching techniques based on LC-ladder filters or shunt-feedback both combined with inductive peaking. Implemented with a SiGe HBT process, the LNAs give 18.0 dB gain, better than -20 dB input matching, and a return loss less than -34 dB, while consuming 11 mW under 1.5 V supply. The feedback LNA gives a better flat noise figure of 2.5 dB and an input IP3 of -6 dB at 5 GHz.

**Index Terms**— LNA, UWB, wideband matching, shunt-feedback Introduction

## I. INTRODUCTION

Although the ultra-wideband (UWB) standard (IEEE 802.15.3a [1], [2] has not been completely defined, there has been an increasing interest in the low-frequency band (3.1-5 GHz) of the UWB allocated frequency range (3.1-10.6 GHz). A major proposal proposes that data rates of up to 400-480 Mb/s can be obtained using the low-frequency band alone. This frequency band has been allocated for the development of the first-generation UWB systems (>100 Mb/s) targeting low-power wireless multimedia applications and high-performance PC peripherals over a short distance up to 10 m. So far, wideband designs are dominated by three different topologies: the distributed amplifiers, resistive shunt-feedback, and recently the LC-ladder filter matching. Two major drawbacks of the distributed amplifiers is that they tend to consume large dc power due to the distributed multiple stages and are not optimized for low noise [3], [4]. The resistive shunt-feedback broadens the working frequency in terms of input impedance matching, gain, and linearity [5], [6]. Also, it reduces the circuit sensitivity to external factors such as biasing, process tolerances, and temperature. However, in narrow-band systems the feedback resistance must be small to match 50  $\Omega$ , hence degrading the noise figure. The LC-ladder match gives good wideband performance with low dc power [8], [9]. However, the reactive elements used in such systems tend to occupy large chip area and degrade the noise figure in case of on-chip implementation.

This paper presents low-noise, low-power, and good linearity SiGe BiCMOS HBT amplifiers and compares the

performance characteristics of the shunt-feedback and LC-ladder filter matching techniques in the UWB 3.1-5 GHz band. The HBT device was chosen because of its higher maximum available gain (MAG) and the ease to obtain an unconditional stability over a wide bandwidth owing to its lower impedance.

## II. DESIGN USING LC-LADDER FILTER MATCHING

The proposed topology, shown in Fig. 1, uses a cascode amplifier embedded in a bandpass LC filter for input matching over the passband.

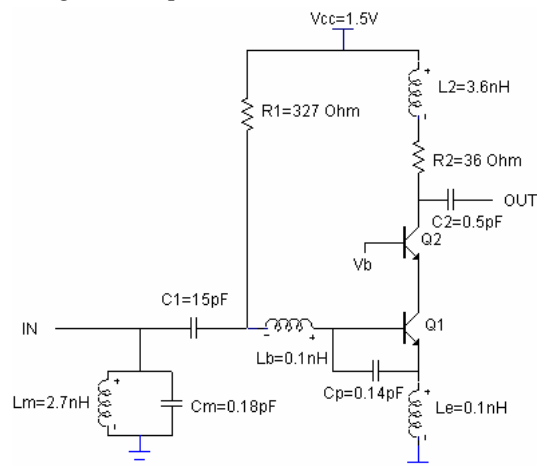


Fig. 1. schematic of a wideband amplifier using LC-Ladder filter matching.

Here, the matching circuit elements are chosen so that [8]

$$L_m \approx \frac{R_S}{w_L} \quad \text{and} \quad L_e \approx \frac{R_S}{w_U} \quad (1)$$

$$C_m \approx \frac{1}{w_U R_S} \quad \text{and} \quad C_t \approx \frac{1}{w_L R_S} \quad (2)$$

where  $w_L$  and  $w_U$  are the lower and upper frequencies of the input bandpass filter, which embeds the total capacitance  $C_t = C_\pi + C_p$  between base and emitter, the emitter-degenerating inductance  $L_e$  and the resistance  $w_L L_e$  is the designed to equal

the source resistance  $R_S$  ( $50\Omega$ ) over the entire bandwidth of resonance  $\omega_U$ - $\omega_L$ .

The voltage gain of the amplifier was derived as

$$\frac{v_{out}}{v_{in}} = \frac{-g_{m1}}{sC_t} \frac{W(s)}{R_S} Z_{cd}(s) \frac{R_2 \left(1 + s \frac{L_2}{R_2}\right)}{1 + sR_2C_{out} + s^2L_2C_{out}} \quad (3)$$

where  $g_{m1}$  is the transconductance of  $Q_1$ ,  $W(s)$  the transfer function of the bandpass filter equals  $R_S$  over the bandpass,  $C_{out}$  the total capacitance at the collector of  $Q_1$ , and  $Z_{cd}(s)$  is the ratio of the current entering the base of  $Q_1$  over the current entering the bandpass filter at the input (IN), which is equal to 0.5 over the bandpass. In (3), the first term is the current gain of  $Q_1$  at high frequency, the product of the first three terms is the output current, that is, the collector of  $Q_1$  and so of  $Q_2$  assuming an ideal operation of the cascode, and the last term is the output impedance at the output node. The inductor  $L_2$  compensates the roll-off with frequency of output current by adding a zero at  $R_2/2\pi L_2$ . Therefore, in order to obtain a flat response over 3.1-5 GHz at the output both the zero due to  $L_2$  and the cutoff frequency

$$f_o = \frac{1}{2\pi\sqrt{L_2C_{out}}}$$

impedance must be pushed beyond 5 GHz. Also, this will ensure that non-linear phase shift and thus nonflat group delay due to peaking does not occur in-band. Figures 2, 3, and 4 show the simulated results of the amplifier, respectively, the smith chart of S11; the S11, S22, and S12 (in dB); and S21 and noise figure (in dB).

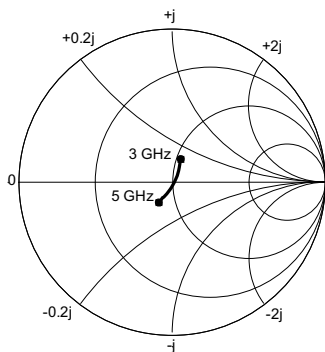


Fig. 2. Simulated S11 traces of LNA using LC-Ladder filter matching.

The power gain is 18 dB with a maximum of about 19 dB at around the center frequency or 4 GHz. This is due to the better matching around this frequency as it is clear in Figs. 2 and 3. However, the noise figure achieved here is around 4.5 dB, which is not as low as expected. In contrary to FET cascode, the condition for optimum gain is different from that of the minimum noise figure, imposing a tradeoff between gain and noise performance.

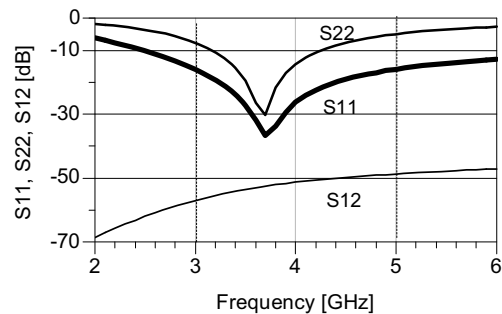


Fig. 3. Simulated input/output return loss and reverse isolation of LNA using LC-Ladder filter matching.

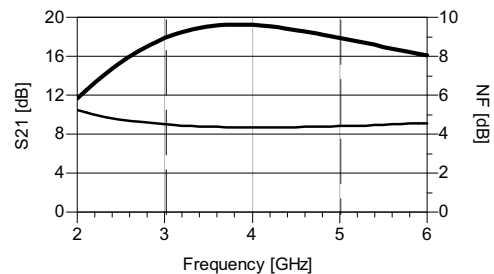


Fig. 4. Simulated power gain and noise figure of LNA using LC-Ladder filter matching.

As can be seen in Fig. 3, the simulated input return loss (S11) is higher than 17 dB over 3-5 GHz. The output return loss (S22) is higher than 5 dB due to the cascode. The reverse isolation is better than -47 dB, which is good. The inductors  $L_c=0.1$  nH and  $L_b=0.1$  nH can be absorbed as a part of the package parasitics during implementation. The inductor  $L_m=2.7$  nH can be realized with a transmission line. The dc power consumed is 11 mW under 1.5 V supply. The Rollet stability factor, decreasing with frequency, was always above 2 due to a careful design of the peaking inductor  $L_2$ , which may cause instability.

### III. DESIGN USING SHUNT-FEEDBACK

Figure 5 shows a schematic of the proposed LNA with a resistive shunt-feedback. The inductor  $L_c$  is added for simultaneous noise and input matching and  $L_b$  for the impedance matching between the source resistance  $R_S$  and the input of the LNA. The emitter inductance ( $L_e$ ) plays the role of a series feedback and hence shifts the input impedance to higher values. This low inductance of about 0.2 nH is realizable with a transmission line, hence sparing additional areas for on-chip spiral inductor.

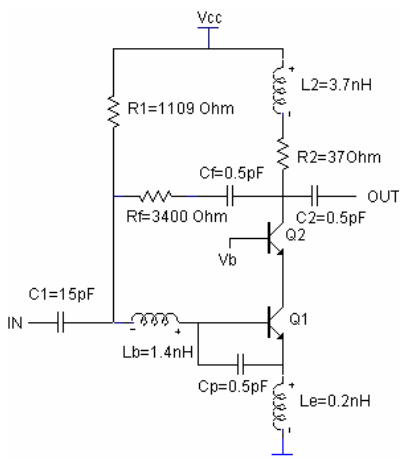


Fig. 5. schematic of a wideband amplifier using resistive shunt-feedback.

Figures 6, 7, and 8 show the S-parameters of the LNA.

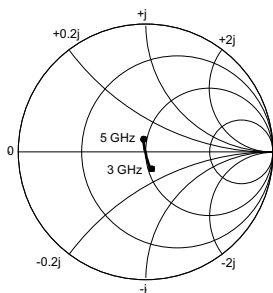


Fig. 6. Simulated S11 traces of LNA using resistive shunt-feedback.

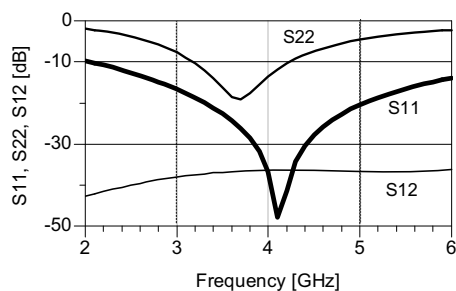


Fig. 7. Simulated input/output return loss and reverse isolation of LNA using resistive shunt-feedback.

It is clear from Figs. 6 and 7 that the feedback allowed a better impedance matching over 3-5 GHz. The Miller feedback resistor at the input reduces the quality factor of the input resonating matching network, hence widening the input match around the center frequency of 4 GHz [3]. The feedback resistance  $R_f = 3.4 \text{ k}\Omega$  here is high enough to not degrade the noise figure while widening enough the impedance matching.

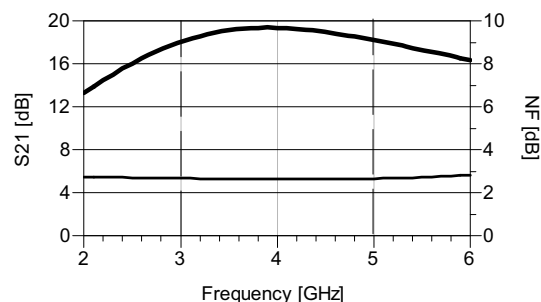


Fig. 8. Simulated power gain and noise figure of LNA using resistive shunt-feedback.

Shunt-feedback for cascode topologies may not be appropriate for the full UWB range (i.e. 3.1-10.6 GHz). Using this technique for wider range would require a significant decrease in  $R_f$  in order to lower the quality factor sufficiently, which would in turn degrade the noise factor. The power gain achieved is about 18.3 dB with a noise figure as low as 2.5 dB, input return loss better than -20 dB, output return loss higher than 5 dB. The reverse isolation is better than -34 dB. The inductors  $L_e=0.2 \text{ nH}$  and  $L_b=1.4 \text{ nH}$  can both be realized with a transmission line. The dc power consumed is 11 mW under 1.5 V supply. The Rollet stability factor was always above 3.

We tried also to benefit from the virtues of both wideband techniques studied above by studying an amplifier using simultaneously the LC-ladder filter matching and resistive shunt-feedback. This has not improved significantly the LNA wideband characteristics. In this case, the voltage gain becomes

$$\frac{v_{out}}{v_{in}} = \frac{-g_{m1} W(s)}{sC_t R_s} Z_{cd}(s) \frac{(R_2 // R_f) \left(1 + s \frac{L_2}{R_2}\right)}{1 + s \left(\frac{L_2}{R_2 + R_f} + (R_2 // R_f) C_{out}\right) + s^2 \frac{(R_2 // R_f)}{R_2} L_2 C_{out}} \quad (4)$$

The cutoff frequency of the last term in (4) becomes

$$f_o = \frac{1}{2\pi \sqrt{\frac{(R_2 // R_f)}{R_2} L_2 C_{out}}}, \text{ hence pushed to higher values}$$

compared with the case of LC-ladder matching without feedback. This would flatten more the output response. However, to obtain a significant flattening,  $R_f$  must be set low enough, degrading hence noise performance of the LNA.

Overall, the shunt-feedback topology gives a better performance over 3-5 GHz. Table I compares the results of the three topologies.

Table II compares the results of the shunt-feedback topology of this work with recently reported works.

TABLE I  
COMPARISON OF WIDEBAND Si LNA PERFORMANCES OF DIFFERENT  
TECHNIQUES

Ref.	Feedback	LC-Matching	Feedback & LC-Matching
S21 (dB)	18.3±1	18.0±1.5	18.0±1.2
NF (dB)	2.5	4.5	2.6
S11 (dB)	< -20	< -17	< -12
S22 (dB)	< -5	< -5	< -5
S12 (dB)	< -34	< -47	< -32
Pdc (mW)	11.0	11.0	11.6
ICP (dBm) @ 5 GHz	-17.0	-18.5	-17.5
ICP (dBm) @ 3 GHz	-19.0	-22.5.5	-18.5
IIP3 (dBm) @ 5 GHz	-6.0	-8.5	-8.3
IIP3 (dBm) @ 3 GHz	-7.8	-11.6	-8.8

#### IV. CONCLUSION

Wideband low-noise amplifiers using different wideband techniques optimized for the lower-frequency band (3-5 GHz) of UWB systems are presented. The amplifiers topology adopts the LC-ladder filter matching and/or conventional resistive shunt-feedback, embedding a HBT cascode amplifier. These techniques have allowed a good input matching. A superior overall performance is obtained with the shunt-feedback technique over 3-5 GHz. The simulated result for this topology shows more than 18 dB of power gain, a higher than -29 dB of input return loss, an output return loss bigger than -5 dB, a reverse isolation better than -34 dB, and an input IP3 of -6 dB, while dissipating 11 mW from a 1.5 V supply. The noise figure stays as low as 2.5 dB over all 3-5 GHz. The proposed resistive shunt-feedback LNA shows advantages in overall performance, compared to other recently published wideband topologies.

TABLE II  
COMPARISON OF FEEDBACK LNA WITH RECENTLY PUBLISHED DESIGNS

Ref.	[3]	[4]	[5]	[6]	[7]	[8]	[9]	This work
3-dB BW (GHz)	2 – 4.6	0.6 – 22	0.02 – 4.6	1 – 7	2.4 – 9.5	2 – 10	0.5 – 5.5	3 – 5
Gain (dB)	9.8	8.1	9.8	13.1	9.3	21	6.5	18.3
NF (dB)	2.3	4.3	1.9	3.3	4	2.5	5.7	2.5
S11 (dB)	< -9	< -8	< -8	< -7.2	< -9.9	-7	< -7	< -20
S22 (dB)	-	-	-	-	-	-	-	< -5
S12 (dB)	-	-	-	-	-	-	-	< -34
Pdc (mW)	12.6	52	35	75	9	27	83.4	11.0
	(only core LNA)				(only core LNA)	(only core LNA)		
IIP3 (dBm)	-7	-	0	-4.7	-6.7	-5.5	-	-6 @ 5 GHz
ICP (dBm)	-	-	-	-	-	-14.7 @ 3.4-5.4 GHz	-	-17.0 @ 5 GHz
Topology	Shunt FB with inductive degeneration	Distributed (single-ended)	Feedback (single-ended)	Feedback (differential)	LC-filter based (single-ended)	LC-filter based (single-ended)	Distributed (single-ended)	Shunt FB with inductive degeneration
Technology	0.18 μm CMOS	0.18 μm CMOS	0.25 μm CMOS	0.18 μm CMOS	0.18 μm CMOS	SiGe	0.6 μm CMOS	SiGe HBT
Year	2005	2003	2002	2003	2004	2004	2000	2006

#### ACKNOWLEDGMENT

The authors wish to thank Sultan Qaboos University (SQU) for providing the facilities and resources. Also, the authors wish to thank the Tunisian Ministry of Scientific Research Technology and Development of competencies for its support and grant in the frame of the program of cooperation with the Tunisian researchers abroad.

#### REFERENCES

- [1] "Multi-band OFDM Physical Layer Proposal," IEEE P802.15 Working Group for Wireless Personal Area Networks (WPANs), [http://grouper.ieee.org/groups/802/15/pub/2003/Jul03/03267r5P802\\_15\\_TG3a-Multi-band-OFDM-CFP-Presentation.ppt](http://grouper.ieee.org/groups/802/15/pub/2003/Jul03/03267r5P802_15_TG3a-Multi-band-OFDM-CFP-Presentation.ppt).
- [2] "XtremeSpectrum CFP Presentation," IEEE P802.15 Working Group for Wireless Personal Area Networks (WPANs), [http://grouper.ieee.org/groups/802/15/pub/2003/Jul03/03267r5P802\\_15\\_TG3a-XtremeSpectrum-CFP-Presentation.ppt](http://grouper.ieee.org/groups/802/15/pub/2003/Jul03/03267r5P802_15_TG3a-XtremeSpectrum-CFP-Presentation.ppt).
- [3] C. W. Kim, M. S. Kang, P. T. Anh, H. T. Kim, and S. G. Lee, "An Ultra-Wideband CMOS Low Noise Amplifier for 3-5 GHz UWB System," *IEEE Journal of Solid-State Circuits*, vol. 40, no. 2, pp. 544-547, Feb. 2005.
- [4] R. -C. Liu, K. -L. Deng, and H. Wang, "A 0.6-22 GHz broadband CMOS distributed amplifier," in *Proc. IEEE Radio Frequency Integrated Circuits (RFIC) Symp.*, June 8-10, 2003, pp. 103-106.
- [5] F. Bruccolori, E. A. M. Klumperink, and B. Nauta, "Noise canceling I wideband CMOS LNA's," in *IEEE ISSCC Dig. Tech. Papers*, vol. 1, Feb. 2002, pp. 406-407.
- [6] S. Andersson, C. Svensson, and O. Drugge, "Wideband LNA for a multistandard wireless receiver in 0.18 μm CMOS," in *Proc. ESSCIRC*, Sept. 2003, pp. 655-658.
- [7] A. Bevilacqua and A. M. Niknejad, "An ultra-wideband CMOS LNA for 3.1 to 10.6 GHz wireless receiver," in *IEEE ISSCC Dig. Tech. Papers*, 2004, pp. 382-383.
- [8] A. Ismail and A. Abidi, "A 3 to 10 GHz LNA using a wideband LC-ladder matching network," in *IEEE ISSCC Dig. Tech. Papers*, 2004, pp. 384-385.
- [9] T. -K. Nguyen et al., "CMOS low noise amplifier design optimization techniques," *IEEE Trans. Microwave Theory Tech.*, vol. 52, no. 5, pp. 1433-1442, May 2004.