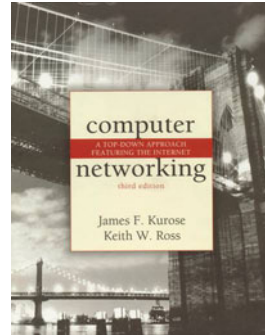


Chapter 2 Application Layer



A note on the use of these ppt slides:

We're making these slides freely available to all (faculty, students, readers). They're in PowerPoint form so you can add, modify, and delete slides (including this one) and slide content to suit your needs. They obviously represent a *lot* of work on our part. In return for use, we only ask the following:

- If you use these slides (e.g., in a class) in substantially unaltered form, that you mention their source (after all, we'd like people to use our book!)
- If you post any slides in substantially unaltered form on a www site, that you note that they are adapted from (or perhaps identical to) our slides, and note our copyright of this material.

Thanks and enjoy! JFK/KWR

All material copyright 1996-2004
J.F Kurose and K.W. Ross, All Rights Reserved

*Computer Networking:
A Top Down Approach
Featuring the Internet,
3rd edition.
Jim Kurose, Keith Ross
Addison-Wesley, July
2004.*

2: Application Layer 1

Chapter 2: Application layer

- 2.1 Principles of network applications
- 2.2 Web and HTTP
- 2.3 FTP
- 2.4 Electronic Mail
 - SMTP, POP3, IMAP
- 2.5 DNS
- 2.6 P2P file sharing
- 2.7 Socket programming with TCP
- 2.8 Socket programming with UDP
- 2.9 Building a Web server

2: Application Layer 2

Chapter 2: Application Layer

Our goals:

- ❑ conceptual, implementation aspects of network application protocols
 - transport-layer service models
 - client-server paradigm
 - peer-to-peer paradigm
- ❑ learn about protocols by examining popular application-level protocols
 - HTTP
 - FTP
 - SMTP / POP3 / IMAP
 - DNS
- ❑ programming network applications
 - socket API

Some network apps

- ❑ E-mail
- ❑ Web
- ❑ Instant messaging
- ❑ Remote login
- ❑ P2P file sharing
- ❑ Multi-user network games
- ❑ Streaming stored video clips
- ❑ Internet telephone
- ❑ Real-time video conference
- ❑ Massive parallel computing

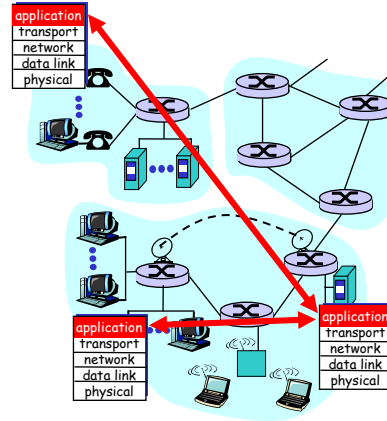
Creating a network app

Write programs that

- run on different end systems and
- communicate over a network.
- e.g., Web: Web server software communicates with browser software

No software written for devices in network core

- Network core devices do not function at app layer
- This design allows for rapid app development



2: Application Layer 5

Chapter 2: Application layer

- 2.1 Principles of network applications
- 2.2 Web and HTTP
- 2.3 FTP
- 2.4 Electronic Mail
 - SMTP, POP3, IMAP
- 2.5 DNS
- 2.6 P2P file sharing
- 2.7 Socket programming with TCP
- 2.8 Socket programming with UDP
- 2.9 Building a Web server

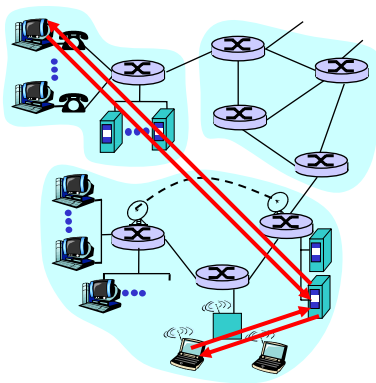
2: Application Layer 6

Application architectures

- Client-server
- Peer-to-peer (P2P)
- Hybrid of client-server and P2P

2: Application Layer 7

Client-server architecture



server:

- always-on host
- permanent IP address
- server farms for scaling

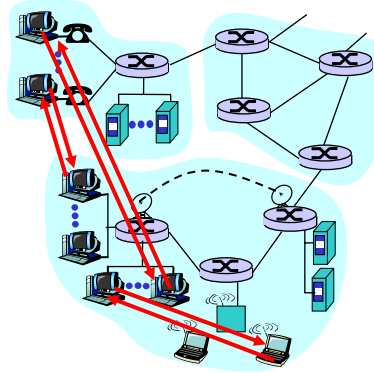
clients:

- communicate with server
- may be intermittently connected
- may have dynamic IP addresses
- do not communicate directly with each other

2: Application Layer 8

Pure P2P architecture

- ❑ no always on server
- ❑ arbitrary end systems directly communicate
- ❑ peers are intermittently connected and change IP addresses
- ❑ example: Gnutella



Highly scalable

But difficult to manage

2: Application Layer 9

Hybrid of client-server and P2P

Napster

- File transfer P2P
- File search centralized:
 - Peers register content at central server
 - Peers query same central server to locate content

Instant messaging

- Chatting between two users is P2P
- Presence detection/location centralized:
 - User registers its IP address with central server when it comes online
 - User contacts central server to find IP addresses of buddies

2: Application Layer 10

Processes communicating

Process: program running within a host.

- within same host, two processes communicate using **inter-process communication** (defined by OS).
- processes in different hosts communicate by exchanging **messages**

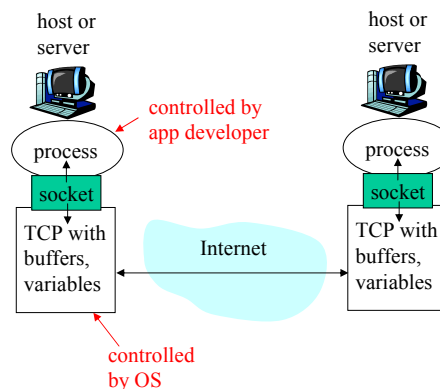
Client process: process that initiates communication

Server process: process that waits to be contacted

- Note: applications with P2P architectures have client processes & server processes

Sockets

- process sends/receives messages to/from its **socket**
- socket analogous to door
 - sending process shoves message out door
 - sending process relies on transport infrastructure on other side of door which brings message to socket at receiving process
- API: (1) choice of transport protocol; (2) ability to fix a few parameters (lots more on this later)



Addressing processes

- ❑ For a process to receive messages, it must have an identifier
- ❑ A host has a unique 32-bit IP address
- ❑ **Q:** does the IP address of the host on which the process runs suffice for identifying the process?
- ❑ **Answer:** No, many processes can be running on same host
- ❑ Identifier includes both the IP address and **port numbers** associated with the process on the host.
- ❑ Example port numbers:
 - HTTP server: 80
 - Mail server: 25
- ❑ **More on this later**

2: Application Layer 13

App-layer protocol defines

- ❑ Types of messages exchanged, eg, request & response messages
- ❑ Syntax of message types: what fields in messages & how fields are delineated
- ❑ Semantics of the fields, ie, meaning of information in fields
- ❑ Rules for when and how processes send & respond to messages
- Public-domain protocols:**
 - ❑ defined in RFCs
 - ❑ allows for interoperability
 - ❑ eg, HTTP, SMTP
- Proprietary protocols:**
 - ❑ eg, KaZaA

2: Application Layer 14

What transport service does an app need?

Data loss

- some apps (e.g., audio) can tolerate some loss
- other apps (e.g., file transfer, telnet) require 100% reliable data transfer

Timing

- some apps (e.g., Internet telephony, interactive games) require low delay to be "effective"

Bandwidth

- some apps (e.g., multimedia) require minimum amount of bandwidth to be "effective"
- other apps ("elastic apps") make use of whatever bandwidth they get

Transport service requirements of common apps

<u>Application</u>	<u>Data loss</u>	<u>Bandwidth</u>	<u>Time Sensitive</u>
file transfer	no loss	elastic	no
e-mail	no loss	elastic	no
Web documents	no loss	elastic	no
real-time audio/video	loss-tolerant	audio: 5kbps-1Mbps video: 10kbps-5Mbps	yes, 100's msec
stored audio/video	loss-tolerant	same as above	yes, few secs
interactive games	loss-tolerant	few kbps up	yes, 100's msec
instant messaging	no loss	elastic	yes and no

Internet transport protocols services

TCP service:

- ❑ *connection-oriented*: setup required between client and server processes
- ❑ *reliable transport* between sending and receiving process
- ❑ *flow control*: sender won't overwhelm receiver
- ❑ *congestion control*: throttle sender when network overloaded
- ❑ *does not provide*: timing, minimum bandwidth guarantees

UDP service:

- ❑ unreliable data transfer between sending and receiving process
- ❑ does not provide: connection setup, reliability, flow control, congestion control, timing, or bandwidth guarantee

Q: why bother? Why is there a UDP?

2: Application Layer 17

Internet apps: application, transport protocols

<u>Application</u>	<u>Application layer protocol</u>	<u>Underlying transport protocol</u>
e-mail	SMTP [RFC 2821]	TCP
remote terminal access	Telnet [RFC 854]	TCP
Web	HTTP [RFC 2616]	TCP
file transfer	FTP [RFC 959]	TCP
streaming multimedia	proprietary (e.g. RealNetworks)	TCP or UDP
Internet telephony	proprietary (e.g., Dialpad)	typically UDP

2: Application Layer 18

Chapter 2: Application layer

- ❑ 2.1 Principles of network applications
 - app architectures
 - app requirements
- ❑ **2.2 Web and HTTP**
- ❑ 2.4 Electronic Mail
 - SMTP, POP3, IMAP
- ❑ 2.5 DNS
- ❑ 2.6 P2P file sharing
- ❑ 2.7 Socket programming with TCP
- ❑ 2.8 Socket programming with UDP
- ❑ 2.9 Building a Web server

Web and HTTP

First some jargon

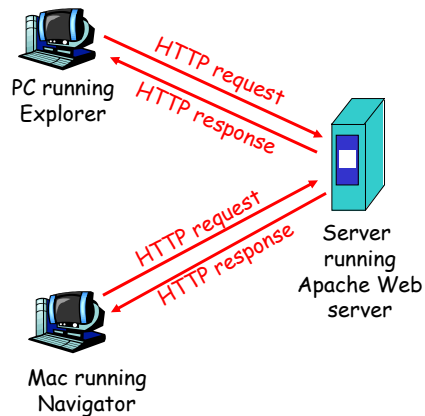
- ❑ **Web page** consists of **objects**
- ❑ Object can be HTML file, JPEG image, Java applet, audio file,...
- ❑ Web page consists of **base HTML-file** which includes several referenced objects
- ❑ Each object is addressable by a **URL**
- ❑ Example URL:

www.someschool.edu / someDept/pic.gif
host name path name

HTTP overview

HTTP: hypertext transfer protocol

- ❑ Web's application layer protocol
- ❑ client/server model
 - *client*: browser that requests, receives, "displays" Web objects
 - *server*: Web server sends objects in response to requests
- ❑ HTTP 1.0: RFC 1945
- ❑ HTTP 1.1: RFC 2068



2: Application Layer 21

HTTP overview (continued)

Uses TCP:

- ❑ client initiates TCP connection (creates socket) to server, port 80
- ❑ server accepts TCP connection from client
- ❑ HTTP messages (application-layer protocol messages) exchanged between browser (HTTP client) and Web server (HTTP server)
- ❑ TCP connection closed

HTTP is "stateless"

- ❑ server maintains no information about past client requests

Protocols that maintain "state" are complex! ^{aside}

- ❑ past history (state) must be maintained
- ❑ if server/client crashes, their views of "state" may be inconsistent, must be reconciled

2: Application Layer 22

HTTP connections

Nonpersistent HTTP

- At most one object is sent over a TCP connection.
- HTTP/1.0 uses nonpersistent HTTP

Persistent HTTP

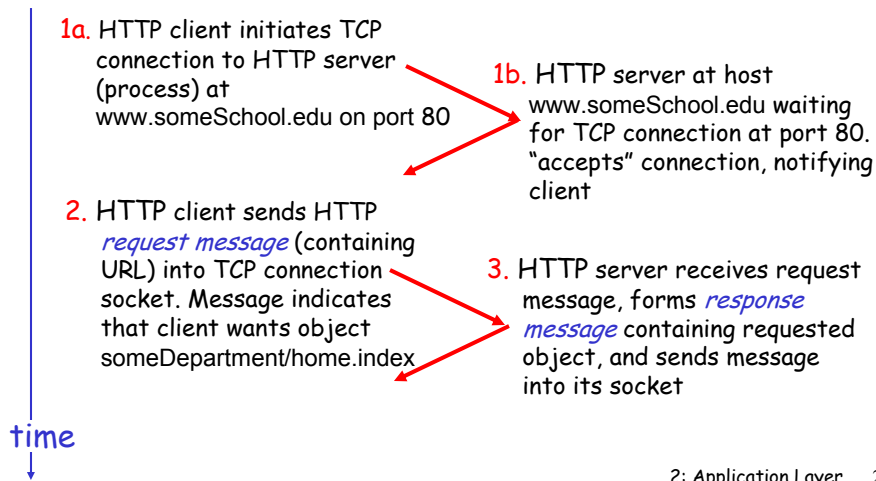
- Multiple objects can be sent over single TCP connection between client and server.
- HTTP/1.1 uses persistent connections in default mode

Nonpersistent HTTP

Suppose user enters URL

`www.someSchool.edu/someDepartment/home.index`

(contains text, references to 10 jpeg images)



Nonpersistent HTTP (cont.)

- time ↓
4. HTTP server closes TCP connection.
 5. HTTP client receives response message containing html file, displays html. Parsing html file, finds 10 referenced jpeg objects
 6. Steps 1-5 repeated for each of 10 jpeg objects

2: Application Layer 25

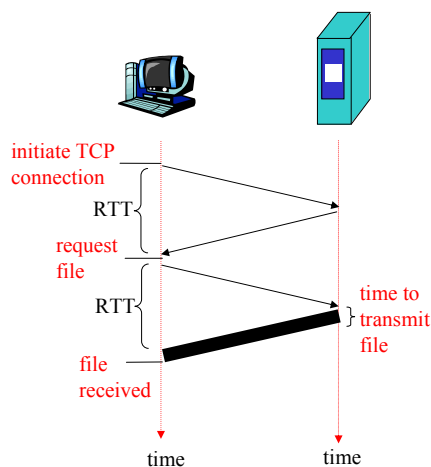
Response time modeling

Definition of RRT: time to send a small packet to travel from client to server and back.

Response time:

- one RTT to initiate TCP connection
- one RTT for HTTP request and first few bytes of HTTP response to return
- file transmission time

total = 2RTT + transmit time



2: Application Layer 26

Persistent HTTP

Nonpersistent HTTP issues:

- ❑ requires 2 RTTs per object
- ❑ OS must work and allocate host resources for each TCP connection
- ❑ but browsers often open parallel TCP connections to fetch referenced objects

Persistent HTTP

- ❑ server leaves connection open after sending response
- ❑ subsequent HTTP messages between same client/server are sent over connection

Persistent without pipelining:

- ❑ client issues new request only when previous response has been received
- ❑ one RTT for each referenced object

Persistent with pipelining:

- ❑ default in HTTP/1.1
- ❑ client sends requests as soon as it encounters a referenced object
- ❑ as little as one RTT for all the referenced objects

2: Application Layer 27

HTTP request message

- ❑ two types of HTTP messages: *request, response*
- ❑ **HTTP request message:**
 - ASCII (human-readable format)

request line
(GET, POST,
HEAD commands)

header
lines

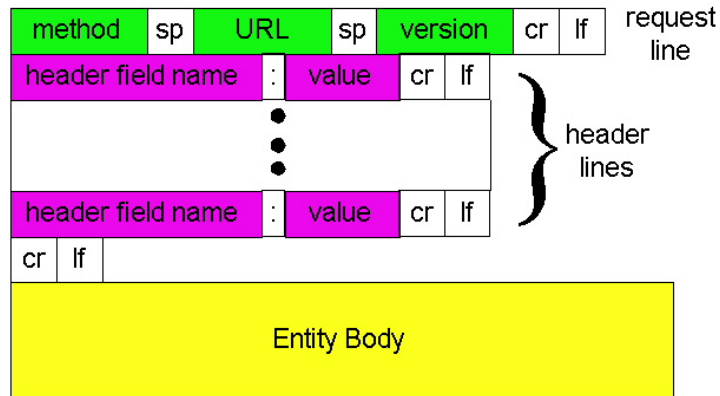
```
GET /somedir/page.html HTTP/1.1
Host: www.someschool.edu
User-agent: Mozilla/4.0
Connection: close
Accept-language: fr
```

Carriage return
line feed
indicates end
of message

(extra carriage return, line feed)

2: Application Layer 28

HTTP request message: general format



2: Application Layer 29

Uploading form input

Post method:

- Web page often includes form input
- Input is uploaded to server in entity body

URL method:

- Uses GET method
- Input is uploaded in URL field of request line:

`www.somesite.com/animalsearch?monkeys&banana`

2: Application Layer 30

Method types

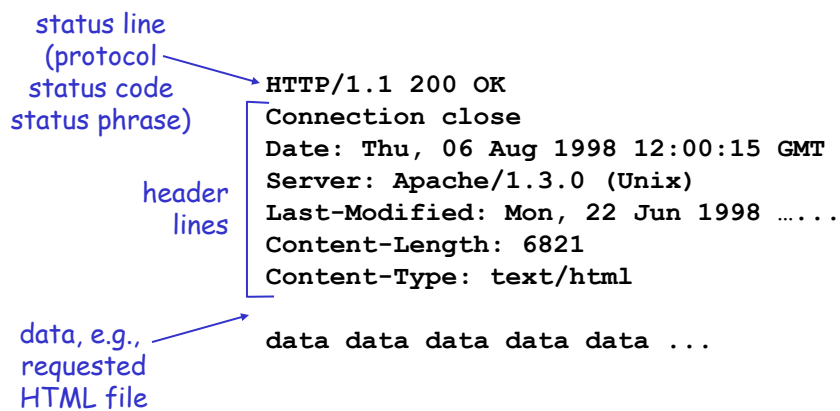
HTTP/1.0

- GET
- POST
- HEAD
 - asks server to leave requested object out of response

HTTP/1.1

- GET, POST, HEAD
- PUT
 - uploads file in entity body to path specified in URL field
- DELETE
 - deletes file specified in the URL field

HTTP response message



HTTP response status codes

In first line in server->client response message.
A few sample codes:

200 OK

- request succeeded, requested object later in this message

301 Moved Permanently

- requested object moved, new location specified later in this message (Location:)

400 Bad Request

- request message not understood by server

404 Not Found

- requested document not found on this server

505 HTTP Version Not Supported

2: Application Layer 33

Trying out HTTP (client side) for yourself

1. Telnet to your favorite Web server:

```
telnet cis.poly.edu 80
```

Opens TCP connection to port 80 (default HTTP server port) at cis.poly.edu. Anything typed in sent to port 80 at cis.poly.edu

2. Type in a GET HTTP request:

```
GET /~ross/ HTTP/1.1  
Host: cis.poly.edu
```

By typing this in (hit carriage return twice), you send this minimal (but complete) GET request to HTTP server

3. Look at response message sent by HTTP server!

2: Application Layer 34

User-server state: cookies

Many major Web sites use cookies

Four components:

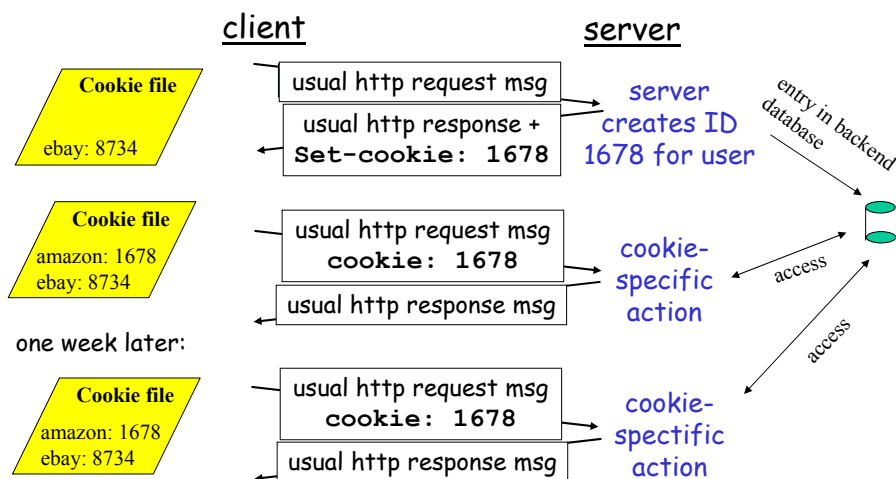
- 1) cookie header line in the HTTP response message
- 2) cookie header line in HTTP request message
- 3) cookie file kept on user's host and managed by user's browser
- 4) back-end database at Web site

Example:

- Susan access Internet always from same PC
- She visits a specific e-commerce site for first time
- When initial HTTP requests arrives at site, site creates a unique ID and creates an entry in backend database for ID

2: Application Layer 35

Cookies: keeping "state" (cont.)



2: Application Layer 36

Cookies (continued)

What cookies can bring:

- ❑ authorization
- ❑ shopping carts
- ❑ recommendations
- ❑ user session state (Web e-mail)

aside

Cookies and privacy:

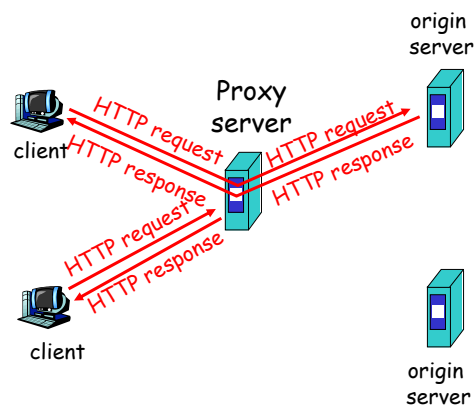
- ❑ cookies permit sites to learn a lot about you
- ❑ you may supply name and e-mail to sites
- ❑ search engines use redirection & cookies to learn yet more
- ❑ advertising companies obtain info across sites

2: Application Layer 37

Web caches (proxy server)

Goal: satisfy client request without involving origin server

- ❑ user sets browser: Web accesses via cache
- ❑ browser sends all HTTP requests to cache
 - object in cache: cache returns object
 - else cache requests object from origin server, then returns object to client



2: Application Layer 38

More about Web caching

- ❑ Cache acts as both client and server
- ❑ Typically cache is installed by ISP (university, company, residential ISP)

Why Web caching?

- ❑ Reduce response time for client request.
- ❑ Reduce traffic on an institution's access link.
- ❑ Internet dense with caches enables "poor" content providers to effectively deliver content (but so does P2P file sharing)

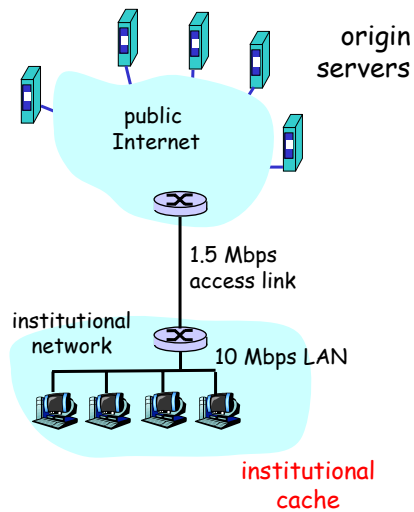
Caching example

Assumptions

- ❑ average object size = 100,000 bits
- ❑ avg. request rate from institution's browsers to origin servers = 15/sec
- ❑ delay from institutional router to any origin server and back to router = 2 sec

Consequences

- ❑ utilization on LAN = 15%
- ❑ utilization on access link = 100%
- ❑ total delay = Internet delay + access delay + LAN delay
= 2 sec + minutes + milliseconds



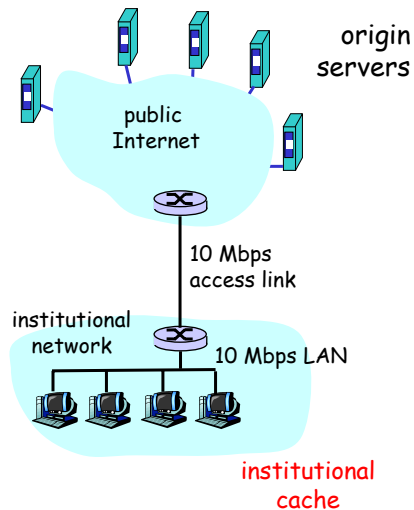
Caching example (cont)

Possible solution

- increase bandwidth of access link to, say, 10 Mbps

Consequences

- utilization on LAN = 15%
- utilization on access link = 15%
- Total delay = Internet delay + access delay + LAN delay
= 2 sec + msec + msec
- often a costly upgrade



2: Application Layer 41

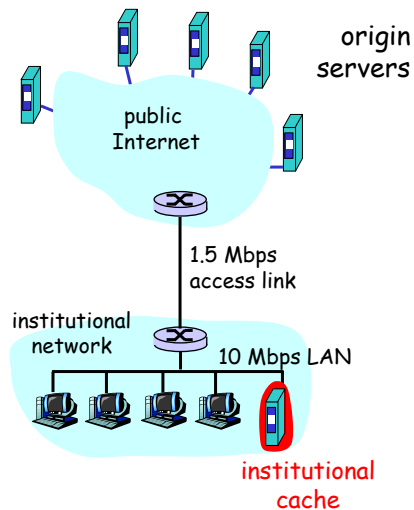
Caching example (cont)

Install cache

- suppose hit rate is .4

Consequence

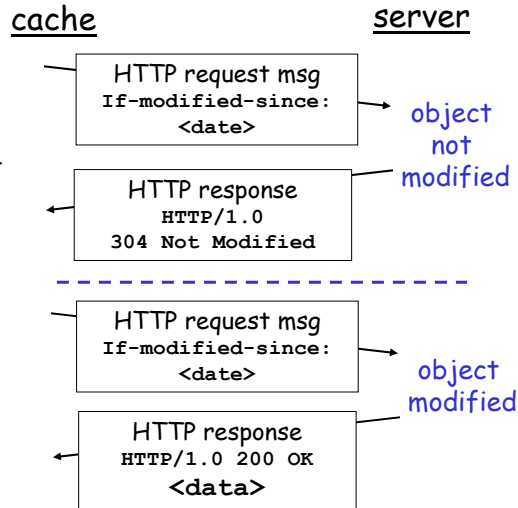
- 40% requests will be satisfied almost immediately
- 60% requests satisfied by origin server
- utilization of access link reduced to 60%, resulting in negligible delays (say 10 msec)
- total avg delay = Internet delay + access delay + LAN delay
= $.6 * (2.01) \text{ secs} + \text{milliseconds} < 1.4 \text{ secs}$



2: Application Layer 42

Conditional GET

- ❑ **Goal:** don't send object if cache has up-to-date cached version
- ❑ **cache:** specify date of cached copy in HTTP request
If-modified-since:
<date>
- ❑ **server:** response contains no object if cached copy is up-to-date:
HTTP/1.0 304 Not Modified



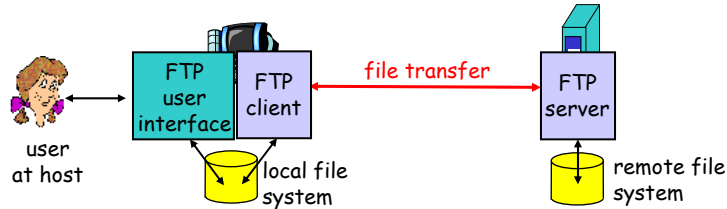
2: Application Layer 43

Chapter 2: Application layer

- ❑ 2.1 Principles of network applications
- ❑ 2.2 Web and HTTP
- ❑ **2.3 FTP**
- ❑ 2.4 Electronic Mail
 - SMTP, POP3, IMAP
- ❑ 2.5 DNS
- ❑ 2.6 P2P file sharing
- ❑ 2.7 Socket programming with TCP
- ❑ 2.8 Socket programming with UDP
- ❑ 2.9 Building a Web server

2: Application Layer 44

FTP: the file transfer protocol

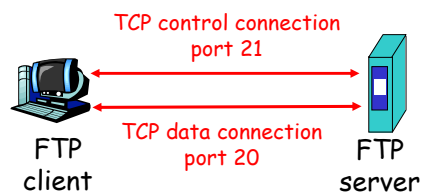


- ❑ transfer file to/from remote host
- ❑ client/server model
 - *client*: side that initiates transfer (either to/from remote)
 - *server*: remote host
- ❑ ftp: RFC 959
- ❑ ftp server: port 21

2: Application Layer 45

FTP: separate control, data connections

- ❑ FTP client contacts FTP server at port 21, specifying TCP as transport protocol
- ❑ Client obtains authorization over control connection
- ❑ Client browses remote directory by sending commands over control connection.
- ❑ When server receives a command for a file transfer, the server opens a TCP data connection to client
- ❑ After transferring one file, server closes connection.



- ❑ Server opens a second TCP data connection to transfer another file.
- ❑ Control connection: "out of band"
- ❑ FTP server maintains "state": current directory, earlier authentication

2: Application Layer 46

FTP commands, responses

Sample commands:

- ❑ sent as ASCII text over control channel
- ❑ USER *username*
- ❑ PASS *password*
- ❑ LIST return list of file in current directory
- ❑ RETR *filename* retrieves (gets) file
- ❑ STOR *filename* stores (puts) file onto remote host

Sample return codes

- ❑ status code and phrase (as in HTTP)
- ❑ 331 Username OK, password required
- ❑ 125 data connection already open; transfer starting
- ❑ 425 Can't open data connection
- ❑ 452 Error writing file

2: Application Layer 47

Chapter 2: Application layer

- ❑ 2.1 Principles of network applications
- ❑ 2.2 Web and HTTP
- ❑ 2.3 FTP
- ❑ 2.4 Electronic Mail
 - SMTP, POP3, IMAP
- ❑ 2.5 DNS
- ❑ 2.6 P2P file sharing
- ❑ 2.7 Socket programming with TCP
- ❑ 2.8 Socket programming with UDP
- ❑ 2.9 Building a Web server

2: Application Layer 48

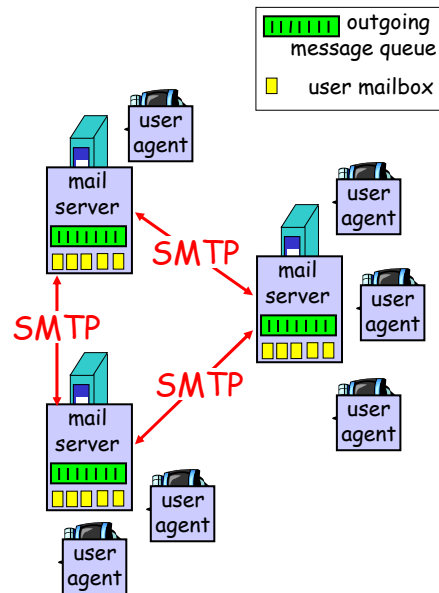
Electronic Mail

Three major components:

- user agents
- mail servers
- simple mail transfer protocol: SMTP

User Agent

- a.k.a. "mail reader"
- composing, editing, reading mail messages
- e.g., Eudora, Outlook, elm, Netscape Messenger
- outgoing, incoming messages stored on server

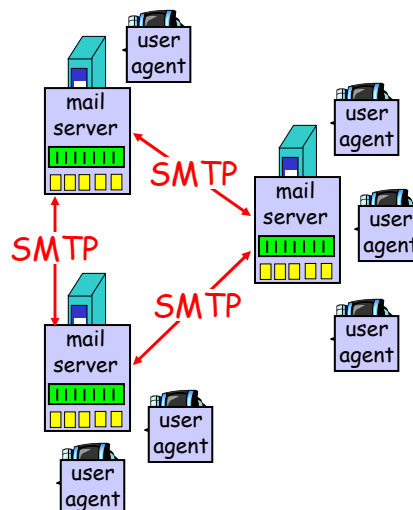


2: Application Layer 49

Electronic Mail: mail servers

Mail Servers

- **mailbox** contains incoming messages for user
- **message queue** of outgoing (to be sent) mail messages
- **SMTP protocol** between mail servers to send email messages
 - client: sending mail server
 - "server": receiving mail server



2: Application Layer 50

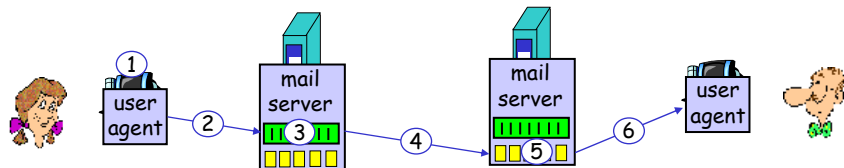
Electronic Mail: SMTP [RFC 2821]

- ❑ uses TCP to reliably transfer email message from client to server, port 25
- ❑ direct transfer: sending server to receiving server
- ❑ three phases of transfer
 - handshaking (greeting)
 - transfer of messages
 - closure
- ❑ command/response interaction
 - **commands**: ASCII text
 - **response**: status code and phrase
- ❑ messages must be in 7-bit ASCII

2: Application Layer 51

Scenario: Alice sends message to Bob

- 1) Alice uses UA to compose message and "to" bob@some school.edu
- 2) Alice's UA sends message to her mail server; message placed in message queue
- 3) Client side of SMTP opens TCP connection with Bob's mail server
- 4) SMTP client sends Alice's message over the TCP connection
- 5) Bob's mail server places the message in Bob's mailbox
- 6) Bob invokes his user agent to read message



2: Application Layer 52

Sample SMTP interaction

```
S: 220 hamburger.edu
C: HELO crepes.fr
S: 250 Hello crepes.fr, pleased to meet you
C: MAIL FROM: <alice@crepes.fr>
S: 250 alice@crepes.fr... Sender ok
C: RCPT TO: <bob@hamburger.edu>
S: 250 bob@hamburger.edu ... Recipient ok
C: DATA
S: 354 Enter mail, end with "." on a line by itself
C: Do you like ketchup?
C: How about pickles?
C: .
S: 250 Message accepted for delivery
C: QUIT
S: 221 hamburger.edu closing connection
```

2: Application Layer 53

Try SMTP interaction for yourself:

- telnet servername 25
 - see 220 reply from server
 - enter HELO, MAIL FROM, RCPT TO, DATA, QUIT commands
- above lets you send email without using email client (reader)

2: Application Layer 54

SMTP: final words

- SMTP uses persistent connections
- SMTP requires message (header & body) to be in 7-bit ASCII
- SMTP server uses CRLF.CRLF to determine end of message

Comparison with HTTP:

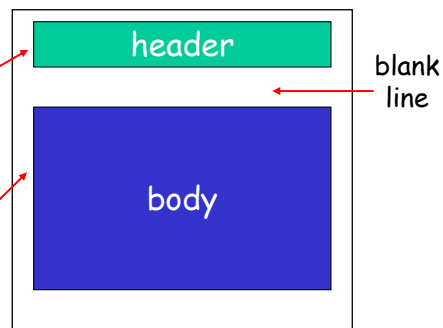
- HTTP: pull
- SMTP: push
- both have ASCII command/response interaction, status codes
- HTTP: each object encapsulated in its own response msg
- SMTP: multiple objects sent in multipart msg

2: Application Layer 55

Mail message format

SMTP: protocol for exchanging email msgs
RFC 822: standard for text message format:

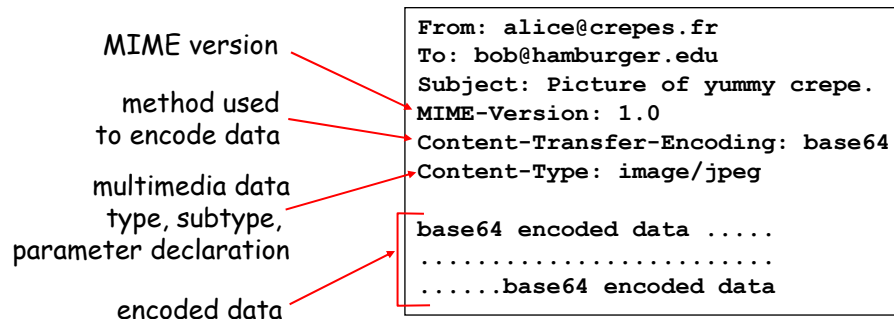
- header lines, e.g.,
 - To:
 - From:
 - Subject:*different from SMTP commands!*
- body
 - the "message", ASCII characters only



2: Application Layer 56

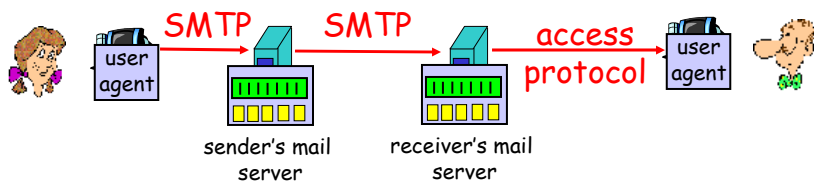
Message format: multimedia extensions

- MIME: multimedia mail extension, RFC 2045, 2056
- additional lines in msg header declare MIME content type



2: Application Layer 57

Mail access protocols



- SMTP: delivery/storage to receiver's server
- Mail access protocol: retrieval from server
 - POP: Post Office Protocol [RFC 1939]
 - authorization (agent <-->server) and download
 - IMAP: Internet Mail Access Protocol [RFC 1730]
 - more features (more complex)
 - manipulation of stored msgs on server
 - HTTP: Hotmail , Yahoo! Mail, etc.

2: Application Layer 58

POP3 protocol

authorization phase

- ❑ client commands:
 - user: declare username
 - pass: password
- ❑ server responses
 - +OK
 - -ERR

transaction phase, client:

- ❑ list: list message numbers
- ❑ retr: retrieve message by number
- ❑ dele: delete
- ❑ quit

```
S: +OK POP3 server ready
C: user bob
S: +OK
C: pass hungry
S: +OK user successfully logged on

C: list
S: 1 498
S: 2 912
S: .
C: retr 1
S: <message 1 contents>
S: .
C: dele 1
C: retr 2
S: <message 1 contents>
S: .
C: dele 2
C: quit
S: +OK POP3 server signing off
```

2: Application Layer 59

POP3 (more) and IMAP

More about POP3

- ❑ Previous example uses "download and delete" mode.
- ❑ Bob cannot re-read e-mail if he changes client
- ❑ "Download-and-keep": copies of messages on different clients
- ❑ POP3 is stateless across sessions

IMAP

- ❑ Keep all messages in one place: the server
- ❑ Allows user to organize messages in folders
- ❑ IMAP keeps user state across sessions:
 - names of folders and mappings between message IDs and folder name

2: Application Layer 60

Chapter 2: Application layer

- ❑ 2.1 Principles of network applications
- ❑ 2.2 Web and HTTP
- ❑ 2.3 FTP
- ❑ 2.4 Electronic Mail
 - SMTP, POP3, IMAP
- ❑ 2.5 DNS
- ❑ 2.6 P2P file sharing
- ❑ 2.7 Socket programming with TCP
- ❑ 2.8 Socket programming with UDP
- ❑ 2.9 Building a Web server

DNS: Domain Name System

People: many identifiers:

- SSN, name, passport #

Internet hosts, routers:

- IP address (32 bit) - used for addressing datagrams
- "name", e.g., ww.yahoo.com - used by humans

Q: map between IP addresses and name ?

Domain Name System:

- ❑ *distributed database* implemented in hierarchy of many *name servers*
- ❑ *application-layer protocol* host, routers, name servers to communicate to *resolve* names (address/name translation)
 - note: core Internet function, implemented as application-layer protocol
 - complexity at network's "edge"

DNS

DNS services

- ❑ Hostname to IP address translation
- ❑ Host aliasing
 - Canonical and alias names
- ❑ Mail server aliasing
- ❑ Load distribution
 - Replicated Web servers: set of IP addresses for one canonical name

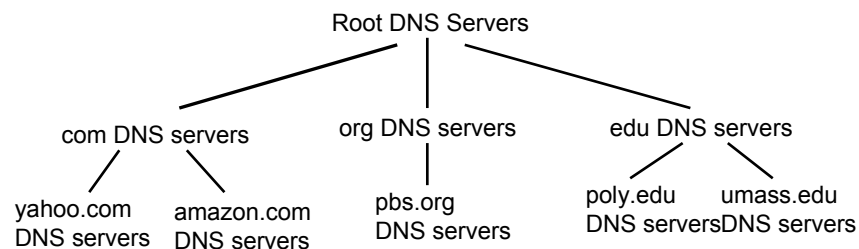
Why not centralize DNS?

- ❑ single point of failure
- ❑ traffic volume
- ❑ distant centralized database
- ❑ maintenance

doesn't *scale!*

2: Application Layer 63

Distributed, Hierarchical Database



Client wants IP for www.amazon.com; 1st approx:

- ❑ Client queries a root server to find com DNS server
- ❑ Client queries com DNS server to get amazon.com DNS server
- ❑ Client queries amazon.com DNS server to get IP address for www.amazon.com

2: Application Layer 64

DNS: Root name servers

- ❑ contacted by local name server that can not resolve name
- ❑ root name server:
 - contacts authoritative name server if name mapping not known
 - gets mapping
 - returns mapping to local name server



TLD and Authoritative Servers

- ❑ **Top-level domain (TLD) servers:** responsible for com, org, net, edu, etc, and all top-level country domains uk, fr, ca, jp.
 - Network solutions maintains servers for com TLD
 - Educause for edu TLD
- ❑ **Authoritative DNS servers:** organization's DNS servers, providing authoritative hostname to IP mappings for organization's servers (e.g., Web and mail).
 - Can be maintained by organization or service provider

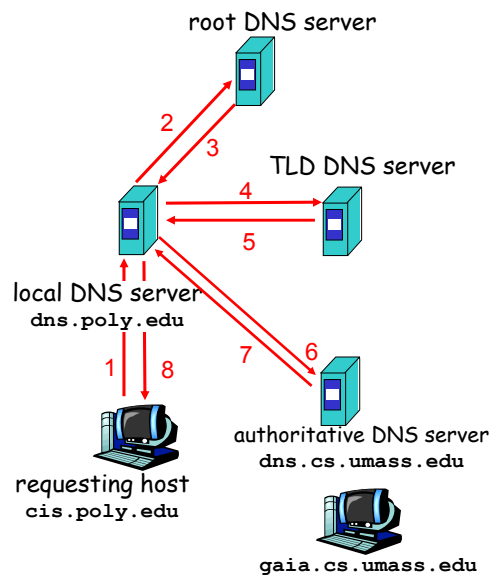
Local Name Server

- ❑ Does not strictly belong to hierarchy
- ❑ Each ISP (residential ISP, company, university) has one.
 - Also called "default name server"
- ❑ When a host makes a DNS query, query is sent to its local DNS server
 - Acts as a proxy, forwards query into hierarchy.

2: Application Layer 67

Example

- ❑ Host at `cis.poly.edu` wants IP address for `gaia.cs.umass.edu`



2: Application Layer 68

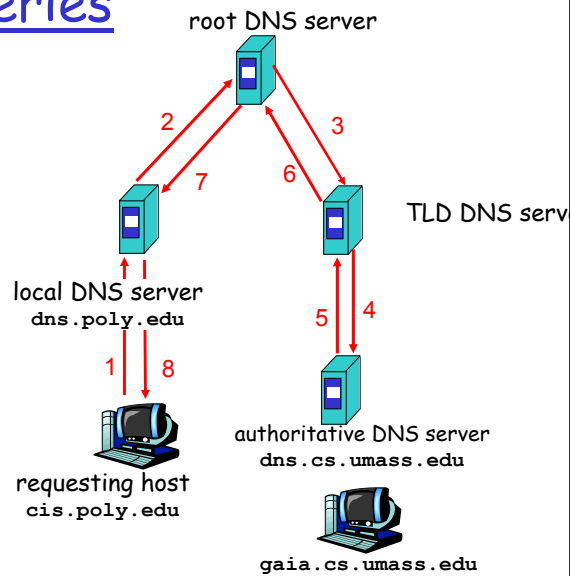
Recursive queries

recursive query:

- ❑ puts burden of name resolution on contacted name server
- ❑ heavy load?

iterated query:

- ❑ contacted server replies with name of server to contact
- ❑ "I don't know this name, but ask this server"



2: Application Layer 69

DNS: caching and updating records

- ❑ once (any) name server learns mapping, it *caches* mapping
 - cache entries timeout (disappear) after some time
 - TLD servers typically cached in local name servers
 - Thus root name servers not often visited
- ❑ update/notify mechanisms under design by IETF
 - RFC 2136
 - <http://www.ietf.org/html.charters/dnsind-charter.html>

2: Application Layer 70

DNS records

DNS: distributed db storing resource records (RR)

RR format: (name, value, type, ttl)

- Type=A
 - name is hostname
 - value is IP address
- Type=NS
 - name is domain (e.g. foo.com)
 - value is IP address of authoritative name server for this domain
- Type=CNAME
 - name is alias name for some "canonical" (the real) name
www.ibm.com is really servereast.backup2.ibm.com
 - value is canonical name
- Type=MX
 - value is name of mailserver associated with name

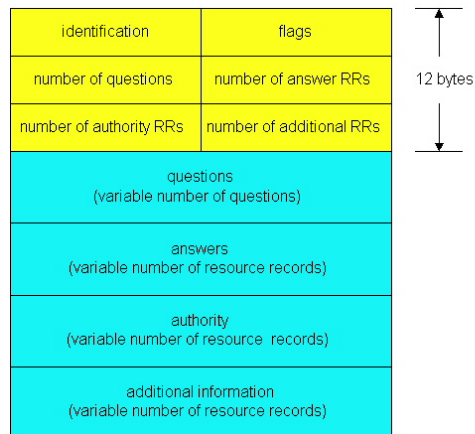
2: Application Layer 71

DNS protocol, messages

DNS protocol : *query* and *reply* messages, both with same *message format*

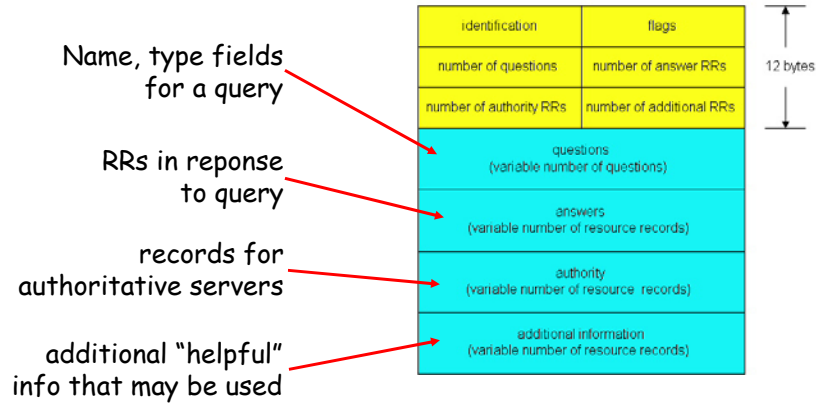
msg header

- identification: 16 bit #
for query, reply to query uses same #
- flags:
 - query or reply
 - recursion desired
 - recursion available
 - reply is authoritative



2: Application Layer 72

DNS protocol, messages



2: Application Layer 73

Inserting records into DNS

- Example: just created startup "Network Utopia"
- Register name networkutopia.com at a **registrar** (e.g., Network Solutions)
 - Need to provide registrar with names and IP addresses of your authoritative name server (primary and secondary)
 - Registrar inserts two RRs into the com TLD server:

```
(networkutopia.com, dns1.networkutopia.com, NS)
(dns1.networkutopia.com, 212.212.212.1, A)
```
- Put in authoritative server Type A record for www.networkutopia.com and Type MX record for networkutopia.com
- **How do people get the IP address of your Web site?**

2: Application Layer 74

Chapter 2: Summary

Our study of network apps now complete!

- Application architectures
 - client-server
 - P2P
 - hybrid
- application service requirements:
 - reliability, bandwidth, delay
- Internet transport service model
 - connection-oriented, reliable: TCP
 - unreliable, datagrams: UDP
- specific protocols:
 - HTTP
 - FTP
 - SMTP, POP, IMAP
 - DNS
- socket programming

2: Application Layer 75

Chapter 2: Summary

Most importantly: learned about protocols

- typical request/reply message exchange:
 - client requests info or service
 - server responds with data, status code
- message formats:
 - headers: fields giving info about data
 - data: info being communicated
- control vs. data msgs
 - in-band, out-of-band
- centralized vs. decentralized
- stateless vs. stateful
- reliable vs. unreliable msg transfer
- "complexity at network edge"

2: Application Layer 76