



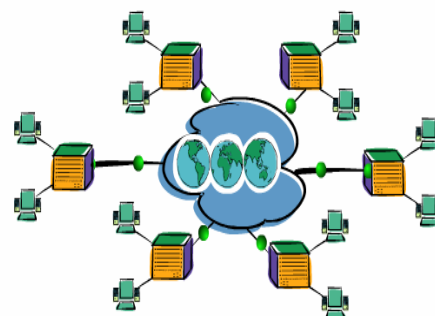
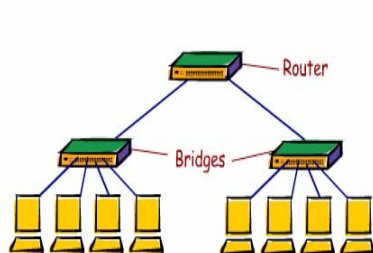
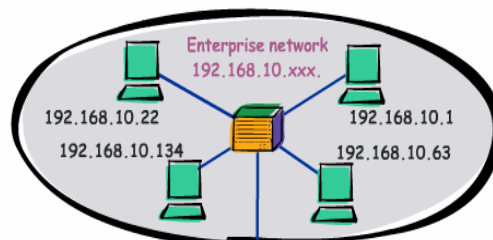
**King Fahd University of Petroleum and Minerals**  
**ELECTRICAL ENGINEERING DEPARTMENT**

## **LABORATORY MANUAL**

**EE-400**

**TELECOMMUNICATIONS NETWORKS**

**TERM-041**



Copyright © Electrical Engineering Department, KFUPM, Saudi Arabia.

## **Preface**

A set of experiments will be carried out to demonstrate and complement the course material. Network design principles and other influential factors are emphasized throughout the lab work. A network design package (Cisco ConfigMaker) is utilized in one experiment to design simple and complex networks. Many network design architectures (peer-to-peer, client-server, point-to-point) are demonstrated and implemented. After carrying out all the experiments, the students are expected to acquire a good hands-on experience in network design, implementation, configuration and troubleshooting.