

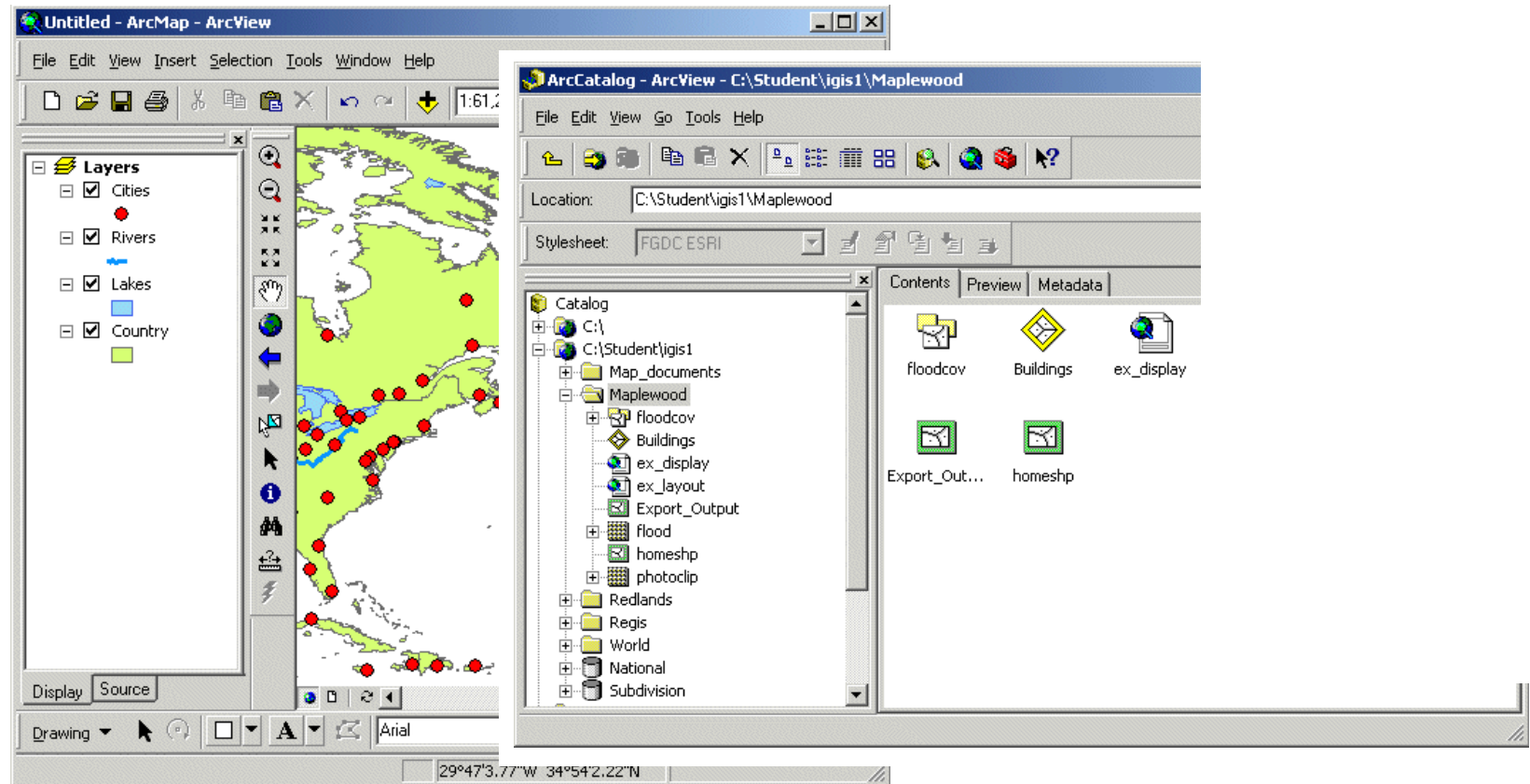
Introduction to ArcView

By

**Dr. Baqer Al-Ramadan,
City and Regional Department
College of Environmental Design
King Fahd University of Petroleum and Minerals**

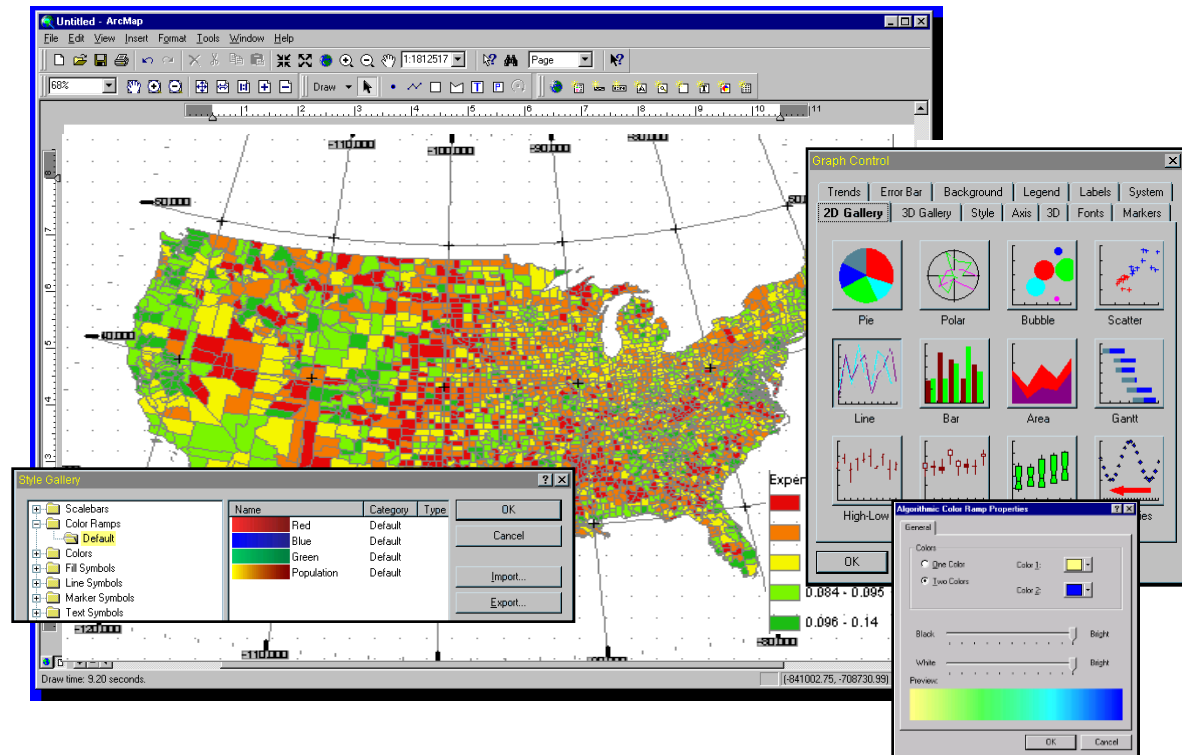
ArcView Applications

- ◆ ArcView includes 2 applications:
ArcMap & ArcCatalog



ArcMap

- ◆ Primary display application
- ◆ Perform map-based tasks
 - ◆ Displaying
 - ◆ Editing
 - ◆ Querying
 - ◆ Analyzing
 - ◆ Charting
 - ◆ Reporting



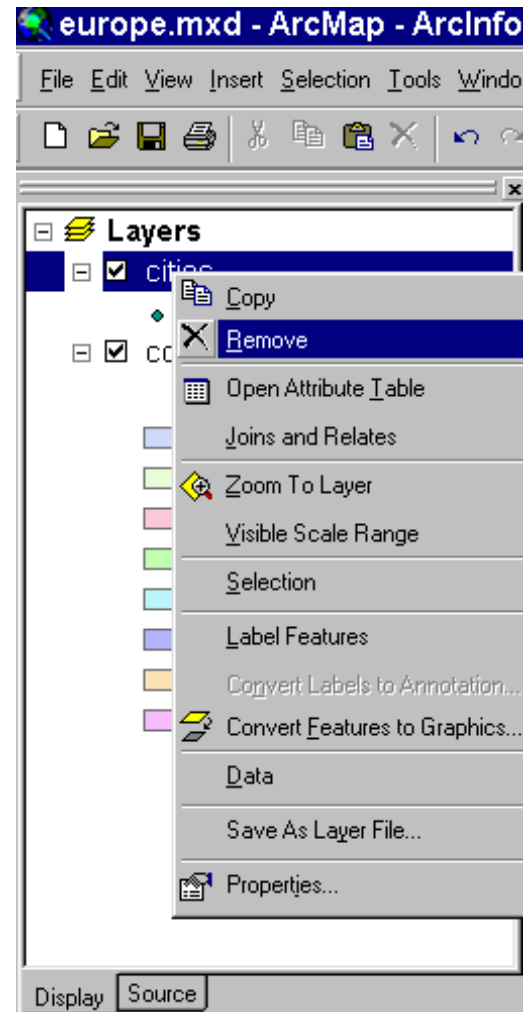
ArcMap Interface

The image shows the ArcMap software interface with several components highlighted and labeled with purple text and arrows:

- Title bar**: Points to the window title "wisconsin.mxd - ArcMap".
- Menu bar**: Points to the menu items: File, Edit, View, Insert, Selection, Tools, Window, Help.
- Standard toolbar**: Points to the row of icons for file operations and navigation.
- Table of Contents Dockable**: Points to the "Layers" panel on the left, which lists "riverssw" and "county" layers.
- Context menu**: Points to the menu that appears over the "Layers" panel, containing options like "Add Data...", "New Group Layer", "Copy", "Paste Layer(s)", "Remove", "Set Reference Scale", "Clear Reference Scale", "Zoom To Reference Scale", "Advanced Drawing Options...", "Convert Labels to Annotation...", "Convert Features to Graphics...", "Activate", and "Properties...".
- Draw toolbar**: Points to the "Drawing" toolbar at the bottom left.
- Status bar**: Points to the bottom-most bar showing coordinates: "58695.80, 265493.71 Meters".
- Display area**: Points to the central map area showing a map of Wisconsin with a blue river network.
- Tools toolbar**: Points to the "Tools" panel on the right, which is docked and contains navigation and analysis tools.

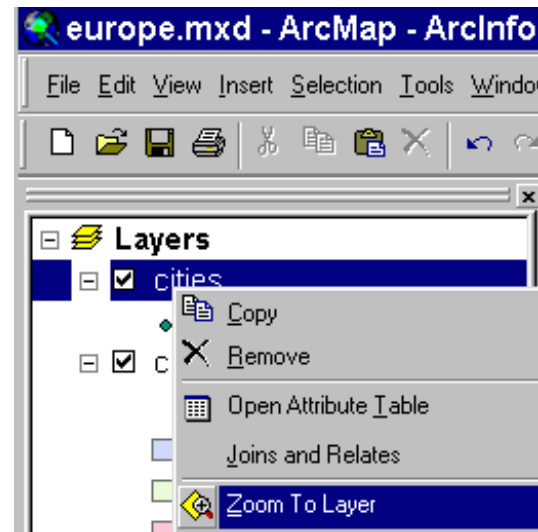
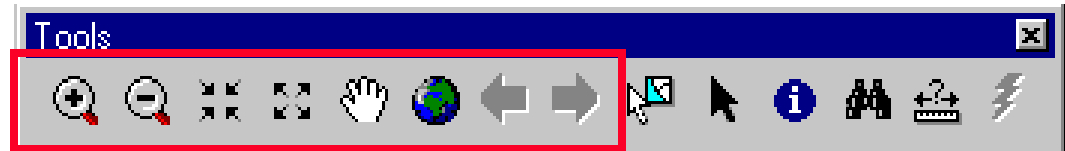
Managing the Table of Contents

- ◆ Drag layers up or down to change display order
- ◆ Rename data frames and layers
- ◆ Remove layers



Moving around the Map

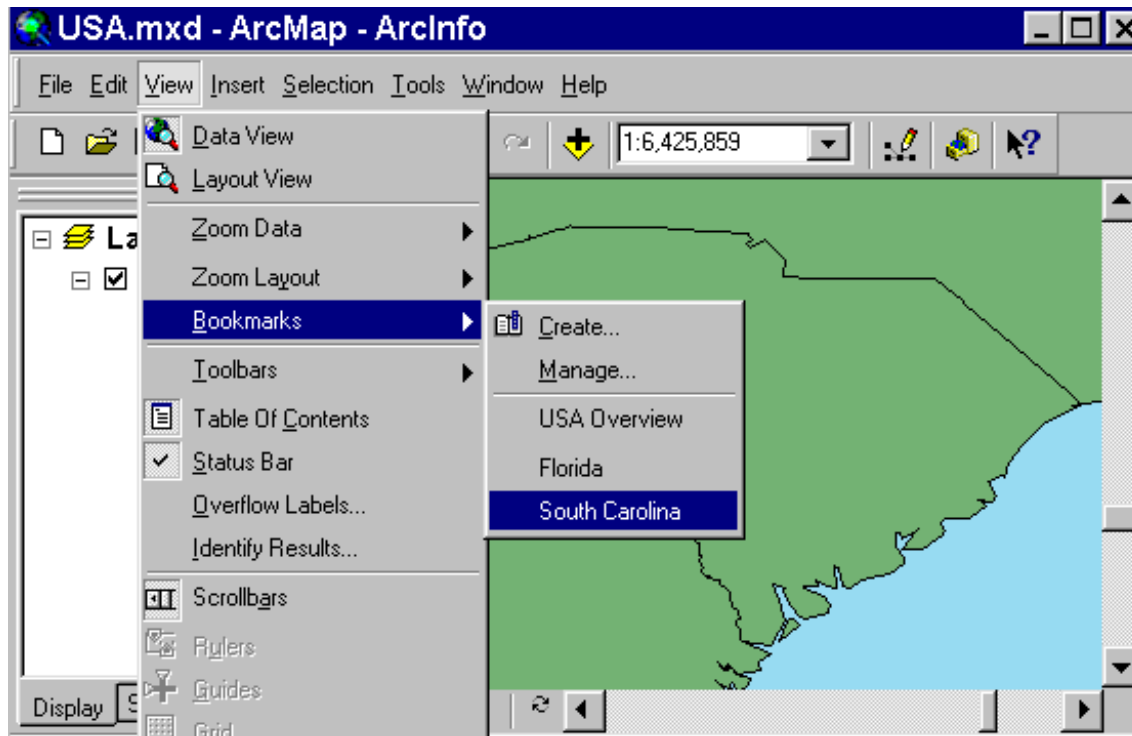
- ◆ Zoom in or out
- ◆ Pan the display
- ◆ Full extents
- ◆ Back or forward one display
- ◆ Zoom to a layer



Using a Bookmark

◆ Spatial bookmarks

- ◆ Set and name a location extent
- ◆ Return to it at any time

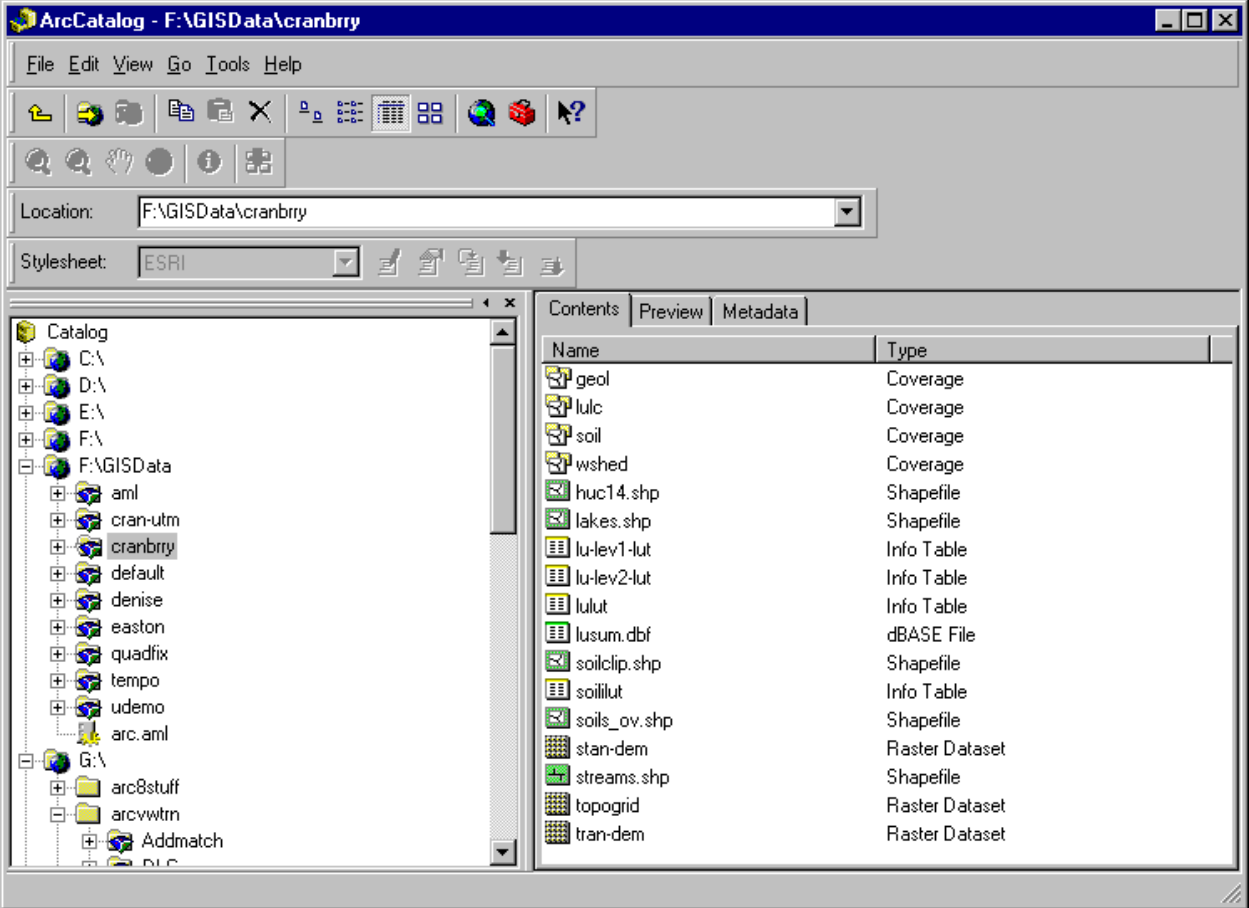


Getting Help

- ◆ Contents tab
- ◆ Index tab
- ◆ Search tab

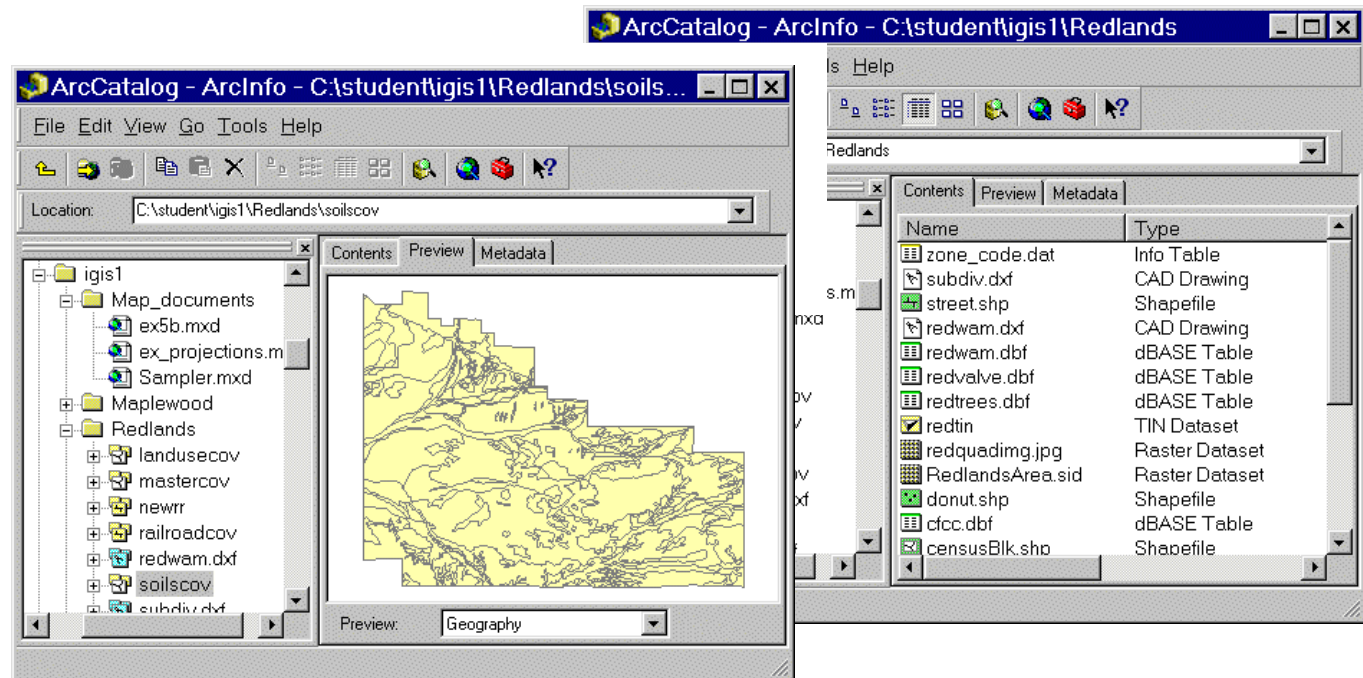


ArcCatalog: Overall Look



ArcCatalog

- ◆ A window into your database
- ◆ Browse and manage your data
- ◆ File management: copy, rename, & delete GIS data files



Thanks for Listening