

KING FAHD UNIVERSITY OF PETROLEUM AND MINERALS



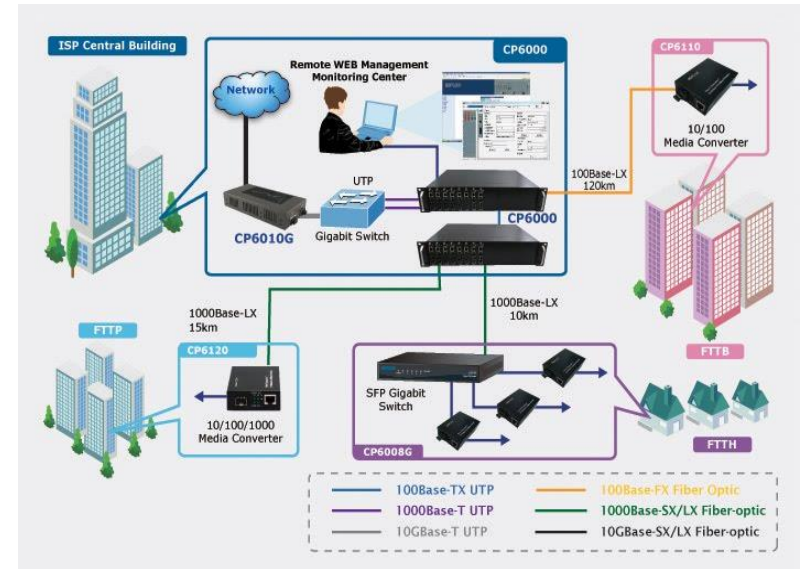
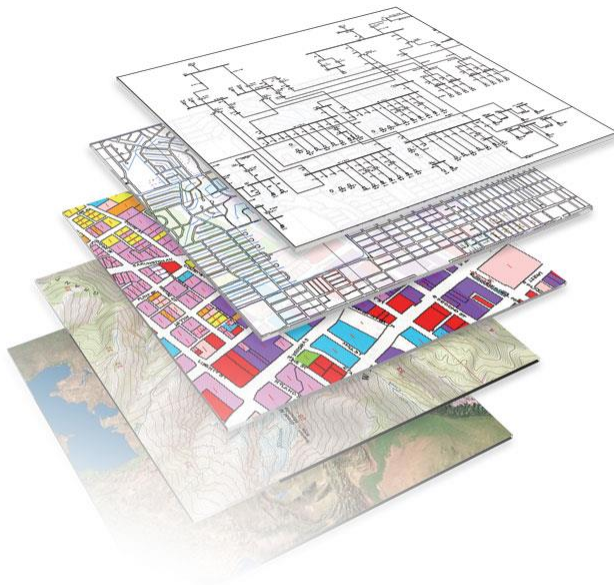
College of Environmental Design City and Regional Planning Department

CRP 514 (Geographic Information System) – 02
Term Project

Prepared for: **Dr. Baqer Al-Ramadan**

Presented by: **Ahmed Saeed Bagazi
Yasar Salem Obad**

Implementing GIS in Optical Fiber Communication



Who are we?



AHMED SAEED BAGAZI
ELECTRICAL ENGINEERING DEPARTEMENT



YASAR SALEM OBAD
CONSTRUCTION ENGINEERING DEPARTMENT



Outline

Introduction

Objective

Methodology

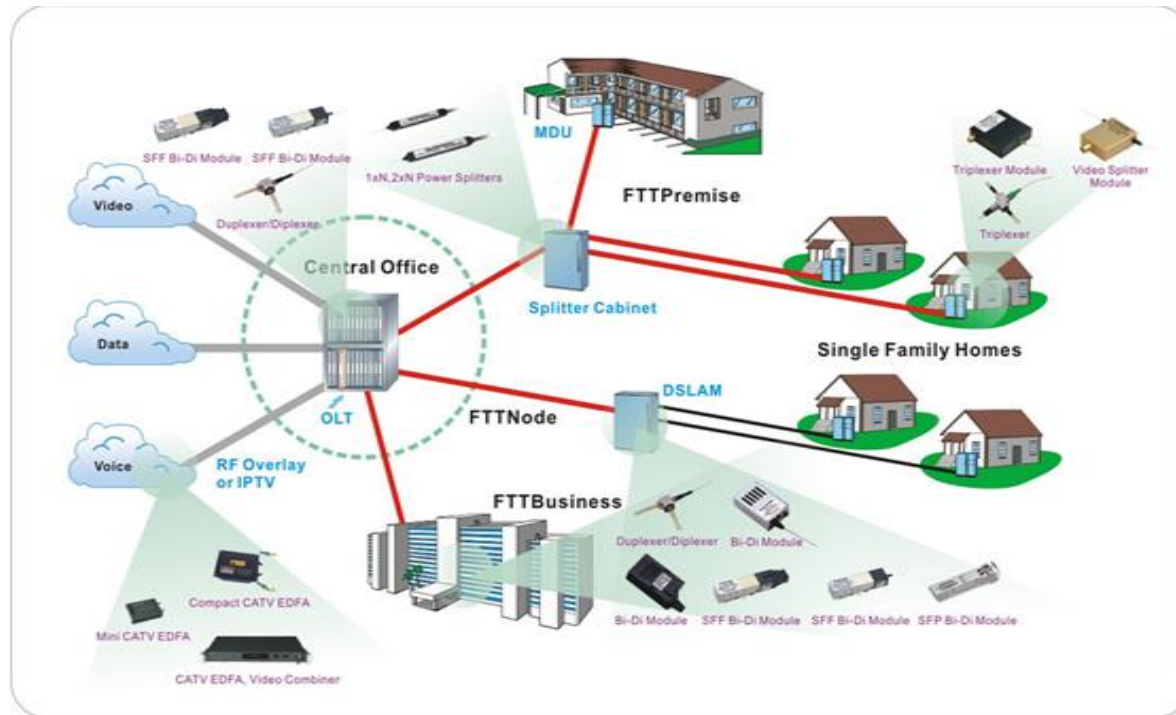
Data used

Case study

Conclusion

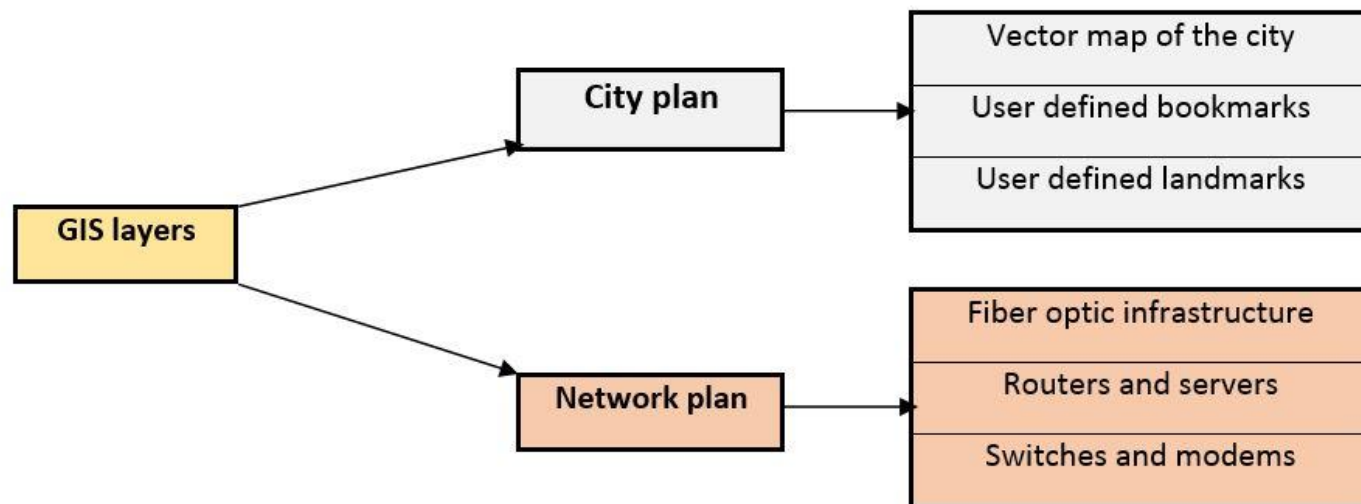
Introduction

- ❖ GIS system definition and concept.
- ❖ Optical fiber network.



Introduction (Cont.)

- ❖ GIS used for optical fiber contains two layers :





Objective

- ❖ Building database for the topology and the locations of the optical fiber project.
- ❖ To know the exactly location of the problem and ability to track any fault.
- ❖ To reduce the period time of the troubleshooting.

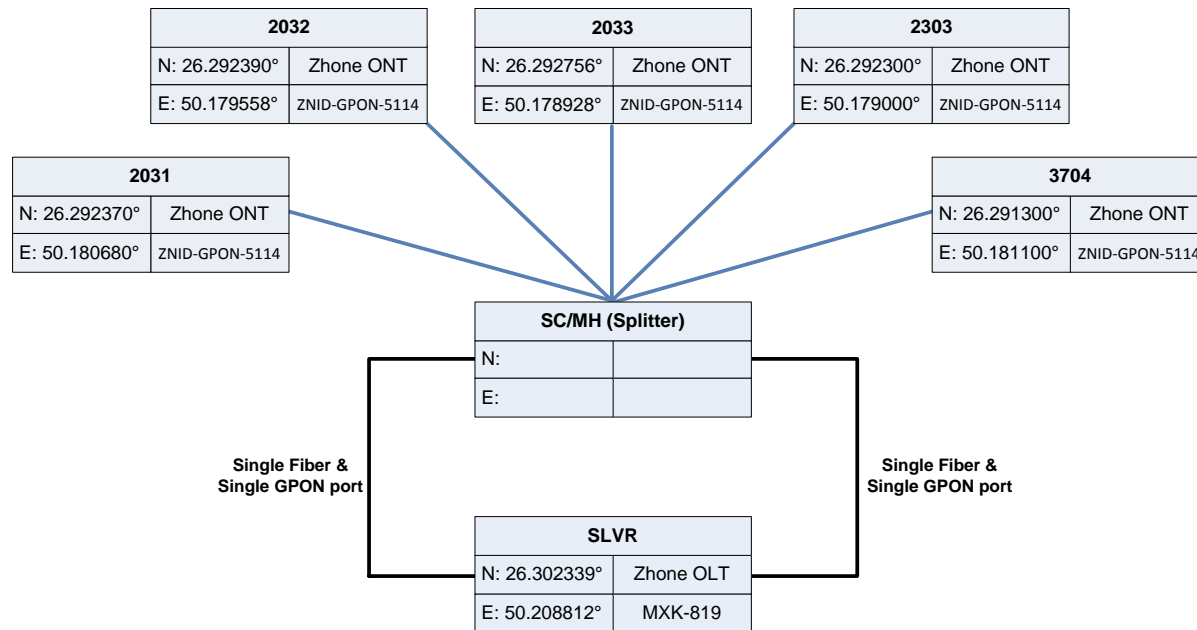
Methodology



- ❖ Determining the location of the customer.
- ❖ Determining the nearest exchange or the branch of the service provider company to the customer and finding free ports in the exchange.
- ❖ Taking the map for the route between the customer and exchange of the service provider.
- ❖ Converting the map to a GIS and building database for this project.

Data Used

I. Rashid Mall



Data Used (Cont.)

2. Timimi Commercial Group

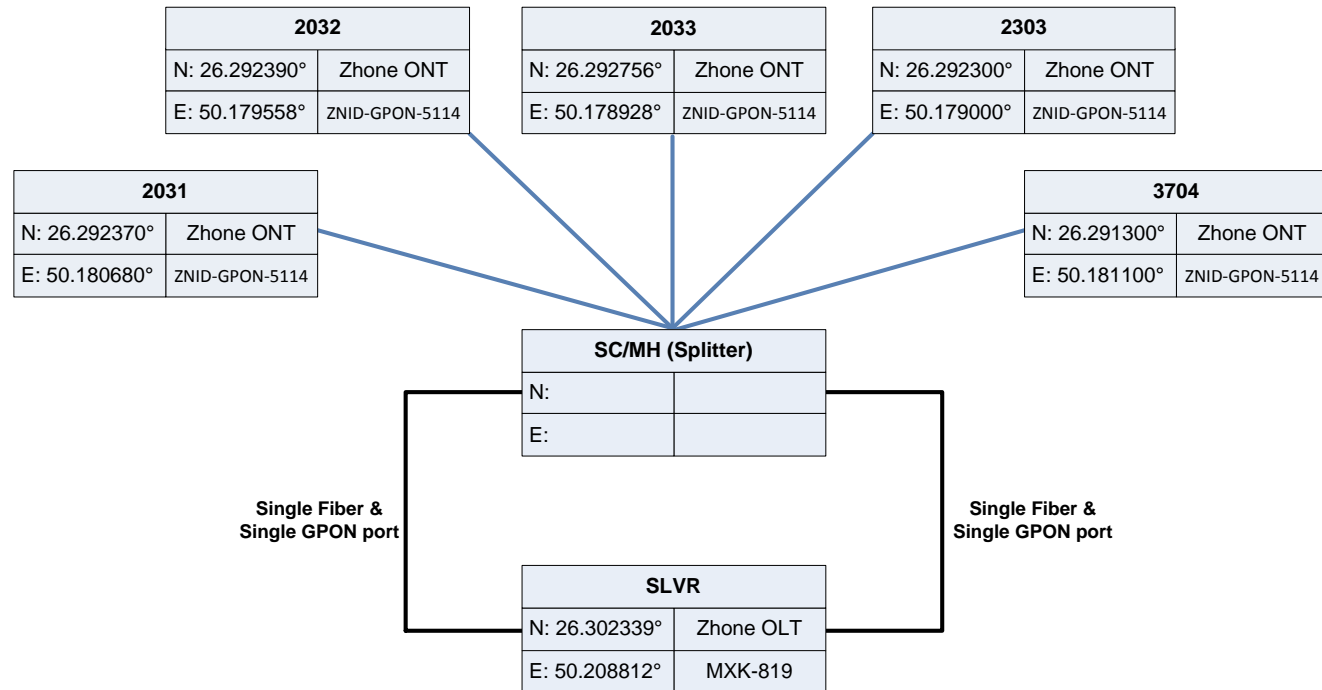
S116	
N: 26.340278°	
E: 50.151944°	

|

RAKA	
N: 26.363394°	OLT
E: 50.197967°	MA5600

Case Study

I. Downloading the map according the coordinates

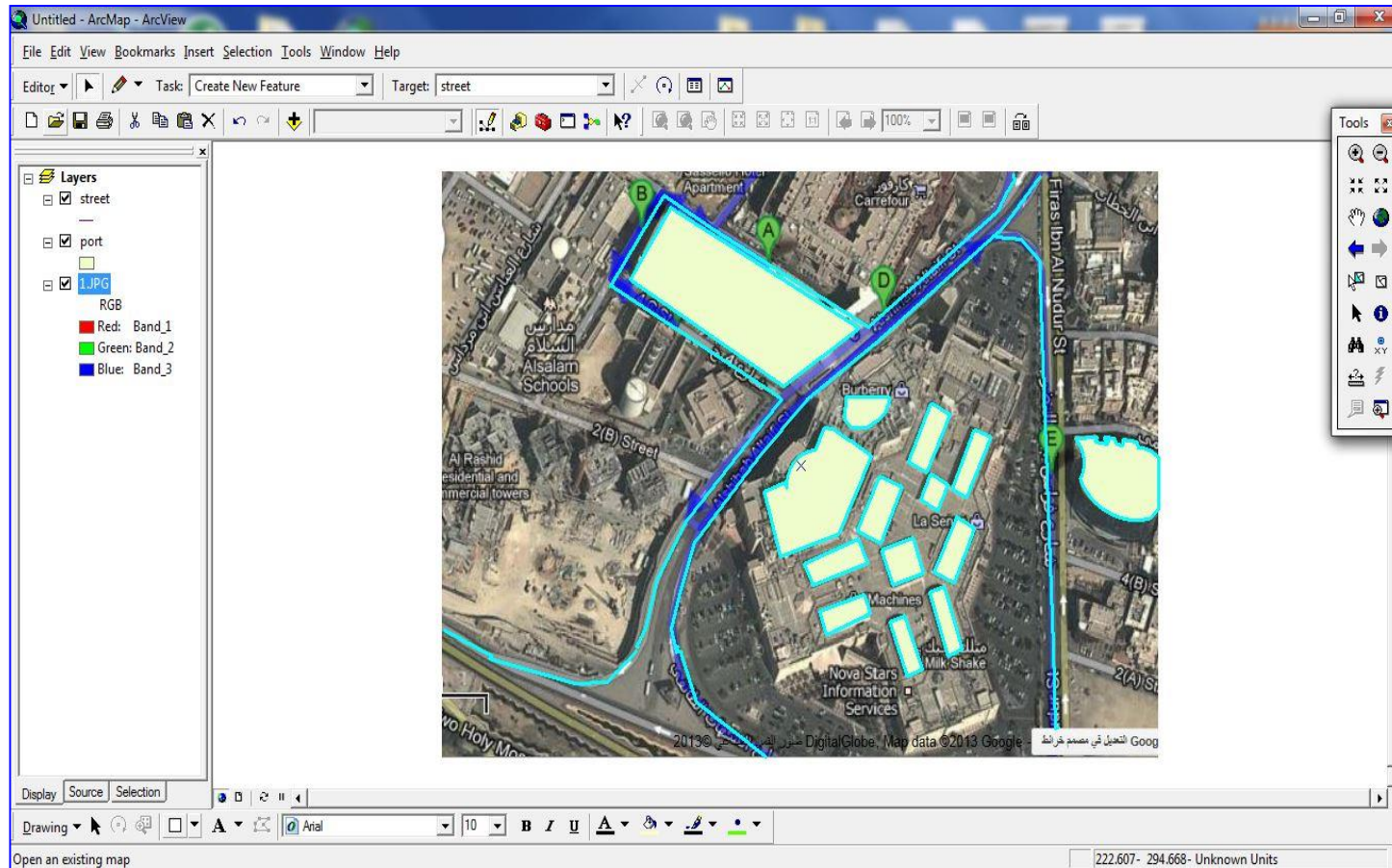


Case Study (Cont.)

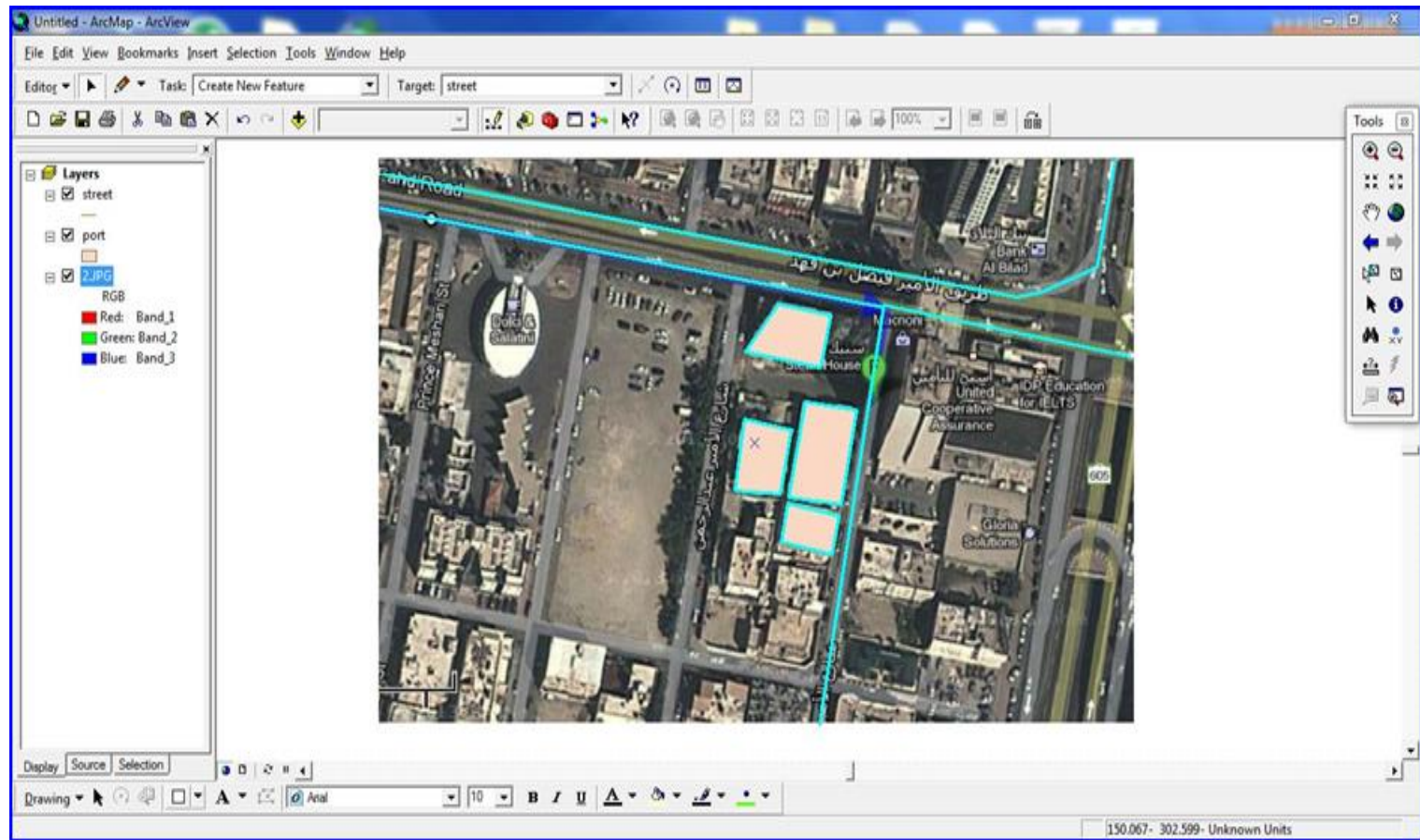


2. Inserting the map to ArcCatalog to make a shpefile
3. Open the shapefile using ArcMap and insert the data.
4. Determining the streets and what the route that we used to connect the exchange with the building.

Case Study (Cont.)



Case Study (Cont.)



Case Study (Cont.)



S/N	Site A	Site B	Distance	Loss 1310	Loss 1550	Comments:
1	SLVR	EXMH	5Km	4.60	3.82	
2	EXMH	SLVR	9Km	5.65	4.48	

-  Exchange/POP
-  Mobility Site
-  Customer Building
-  SCMH

-  Primary Route
-  In Progress
-  Proposed
-  Existing Route

Case Study (Cont.)



6. Taking the detailed picture as a map.



Conclusion



- ❖ GIS used for optical fiber to make a good reference database.
- ❖ The way to determine the exactly location become easily with GIS.
- ❖ The big problem that we face in this project is the data, because it is not public.

**Thank You
for the Attention**

Q & A

