

Early Weather Warning System for Saudi Arabia using GIS

Faisal Al Zawad

CRP 514: Introduction to GIS

Outlines

- Introduction
- Problem Statement
- Objectives
- Methodology
- Limitation
- Examples of related GIS projects
- Conclusion

Introduction

- Importance of weather data and information:
Public, military and civilian aviation, businesses, officials
- Current State of PME Early Warning System:
<http://www.pme.gov.sa/warnn.asp>

Problem Statement

- The current Early Warning System will issue a warning over a whole province or much wider region than intended for the lack of availability of a suitable geographic system. A thunderstorm warning for an example is needed to be more precise with regards to location in order to better protect life and property.

Objectives

1. Replacing the current Early Warning System with a New geographic warning system using GIS.
2. Including information about the population to give details about population at risk.
3. Helping emergency official to take proper actions.
4. Minimizing loss of life and property.

Methodology

- Converting meteorological data to points, lines and polygons.
- GIS as a Weather Processing System using ESRI prototype GIS/WPS.
- Using GIS compatible programming language like Visual basic and Java.
- A software called Warngen is recommended.

Study Limitation

- Digitized data is not available for all regions in Saudi Arabia.
- PME personals are not familiar with GIS.

Examples of related GIS projects

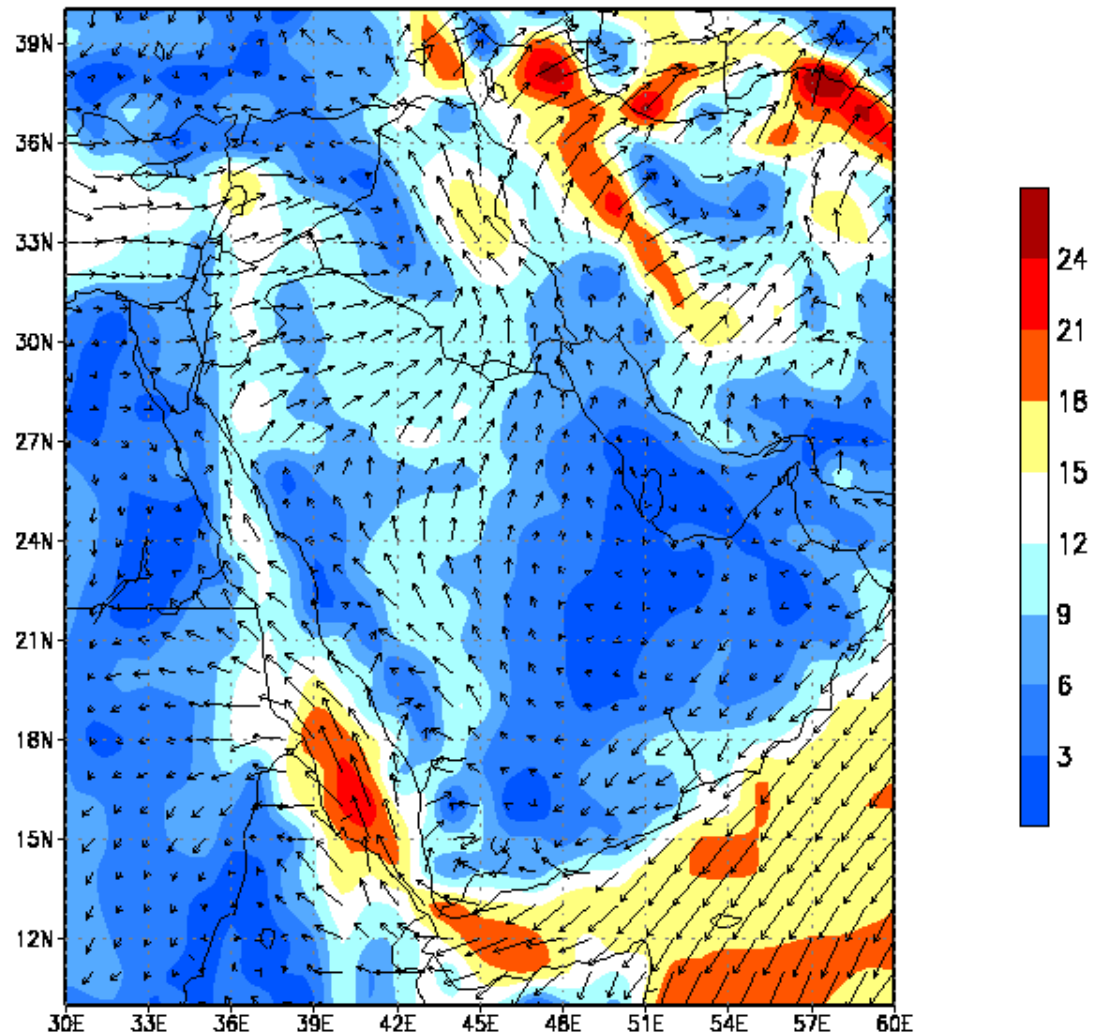
1. 1996 [ESRI](#) ArcInfo 7.0.3 and Arc View 2.0
Graphical User Interfacr (GUI) toolkits
ESRI ARC Macro Language (AML)
2. US National Weather Service Offices across the
Southern Region:
[Fort Worth](#), TX
3. [COMMET](#) program using GIS:
<http://meted.ucar.edu/qpf/urbanf/tab2ftc.htm>

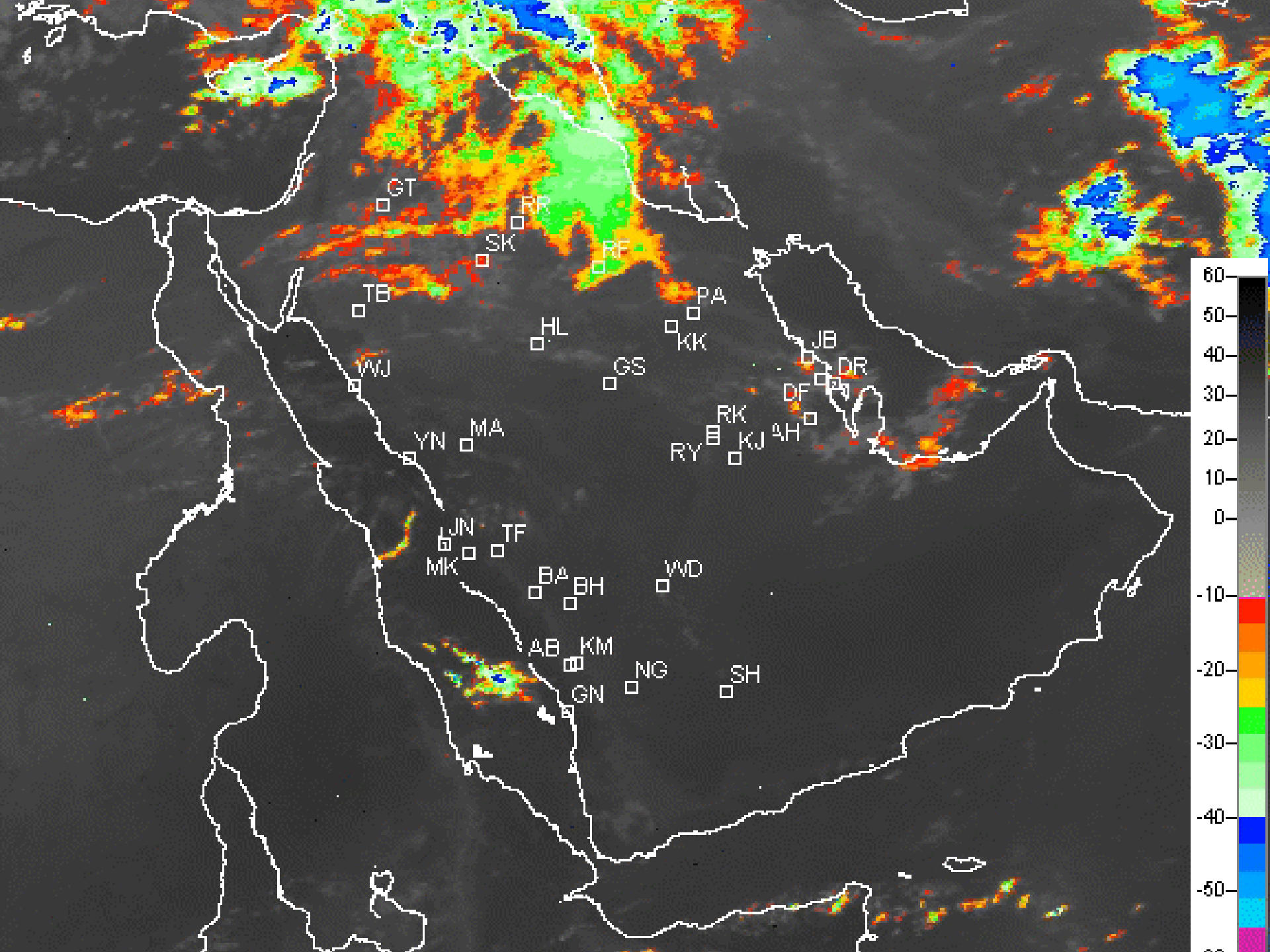
Conclusion

- Integrating GIS to the current Early Warning System will enhance benefits to public and officials.
- Detailed information about population at risk will be critical during emergency.
- Using GIS will support Saudi Government initiative to build an Electronic Government

Thank You!

10 m isotachs (knot) Mon 09Z 13jan2003







الرئاسة العامة للأرصاد وحماية البيئة

البحث

أخبار



نظام التحذيرات الآتية

مراحل التحذير



معلومات آتية

مات
حج ١٤٢٦هـ

ت قصيرة المدى
م

أم
لأقمار الصناعية

يل المناخية
ات جودة الهواء

برق الآتية
تة الجوية

ت: ويلر
ع

ائف
ان

ان

ية الجفاف
ات الفصلية

تذيرات
رارة

طار
بارير

ات الشهيرة
تذيرات

رارة
طار

طوبة
برير

ات الفصلية
ت

ء النباتي
ت خاصة

ات خاصة
ن العام

الإدارات
ات خاصة

المعلومات
الخليج

عالمية
الإلكتروني

نقل الملفات



IAD : Sterling, VA


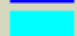



Wsr88_lo.dbf



Wfo.dbf



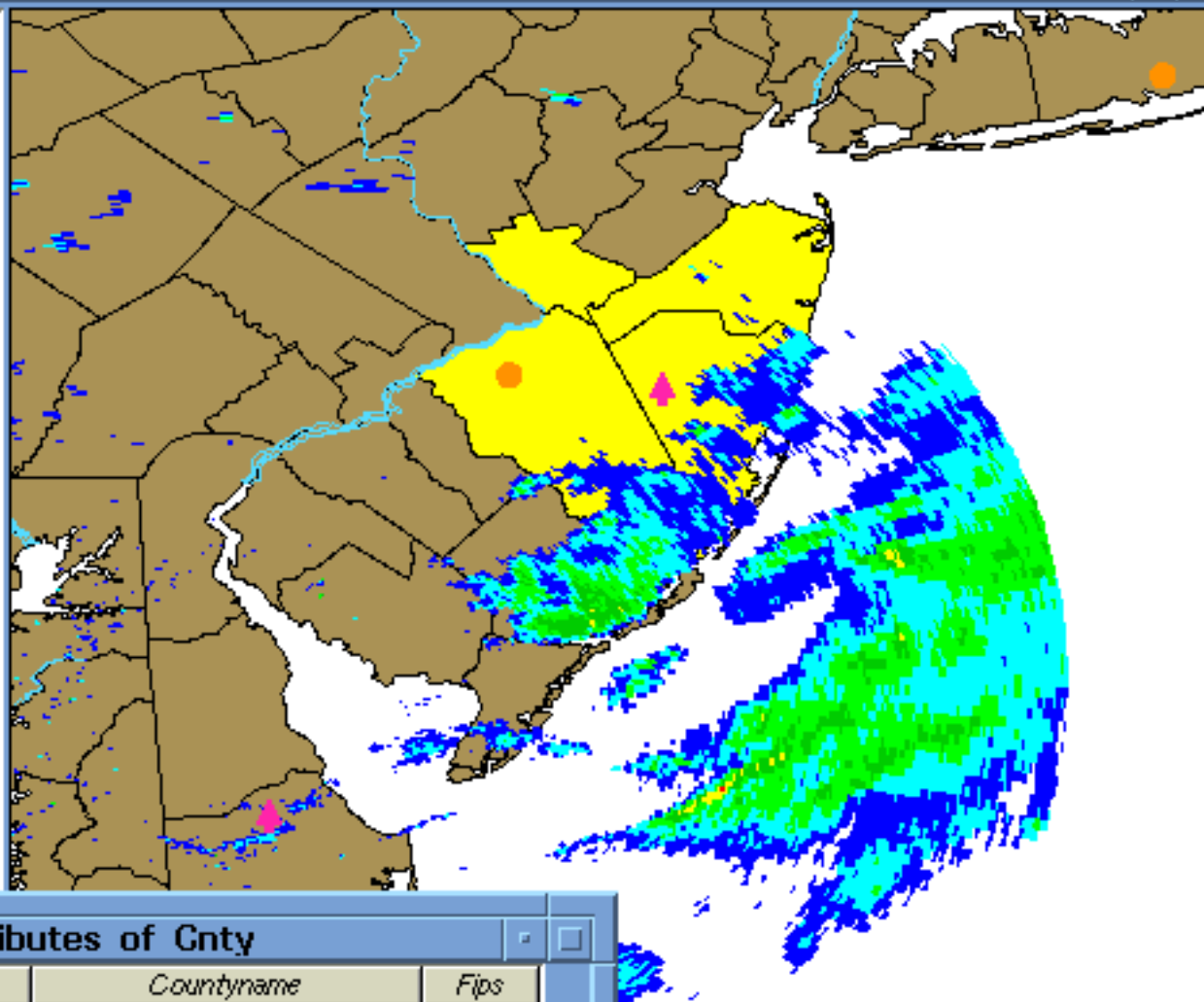
S_radar.shp

-  0 - 1
-  1 - 2
-  2 - 3
-  3 - 4
-  4 - 5
-  5 - 6

Usa_cln_river



Cnty



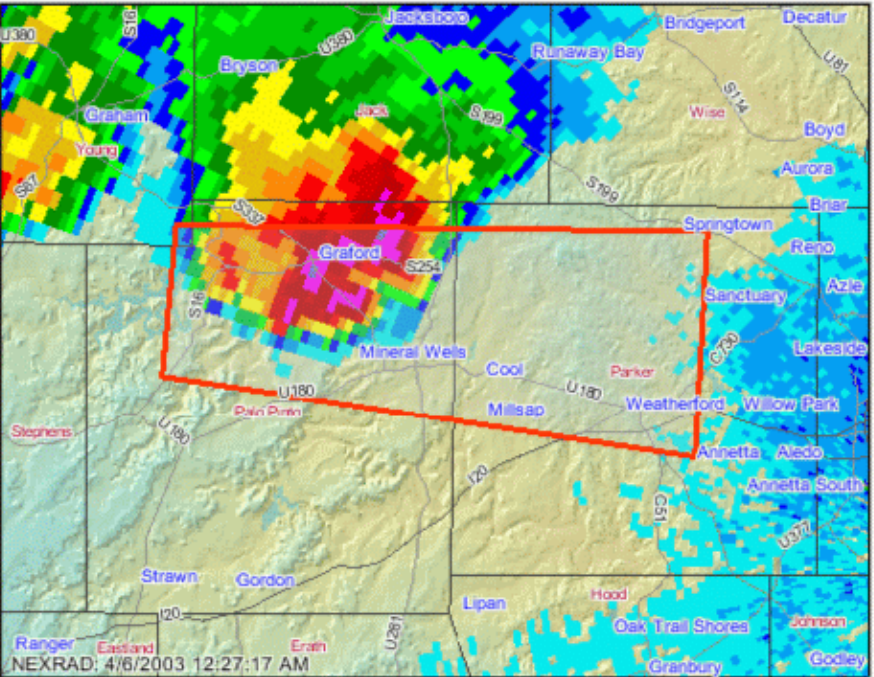
Attributes of Cnty

Statename	Countyname	Fips
NEW JERSEY	MERCER	34021
NEW JERSEY	MONMOUTH	34025
NEW JERSEY	BURLINGTON	34005
NEW JERSEY	OCEAN	34029
MONTANA	CHERIDAN	30001

National Weather Service WFUS54 KFWD 060029 200304 Warning Profile

TORNADO WARNING

Issued: Saturday 4/5/2003 6:27:00 PM Expires: Saturday 4/5/2003 7:30:00 PM



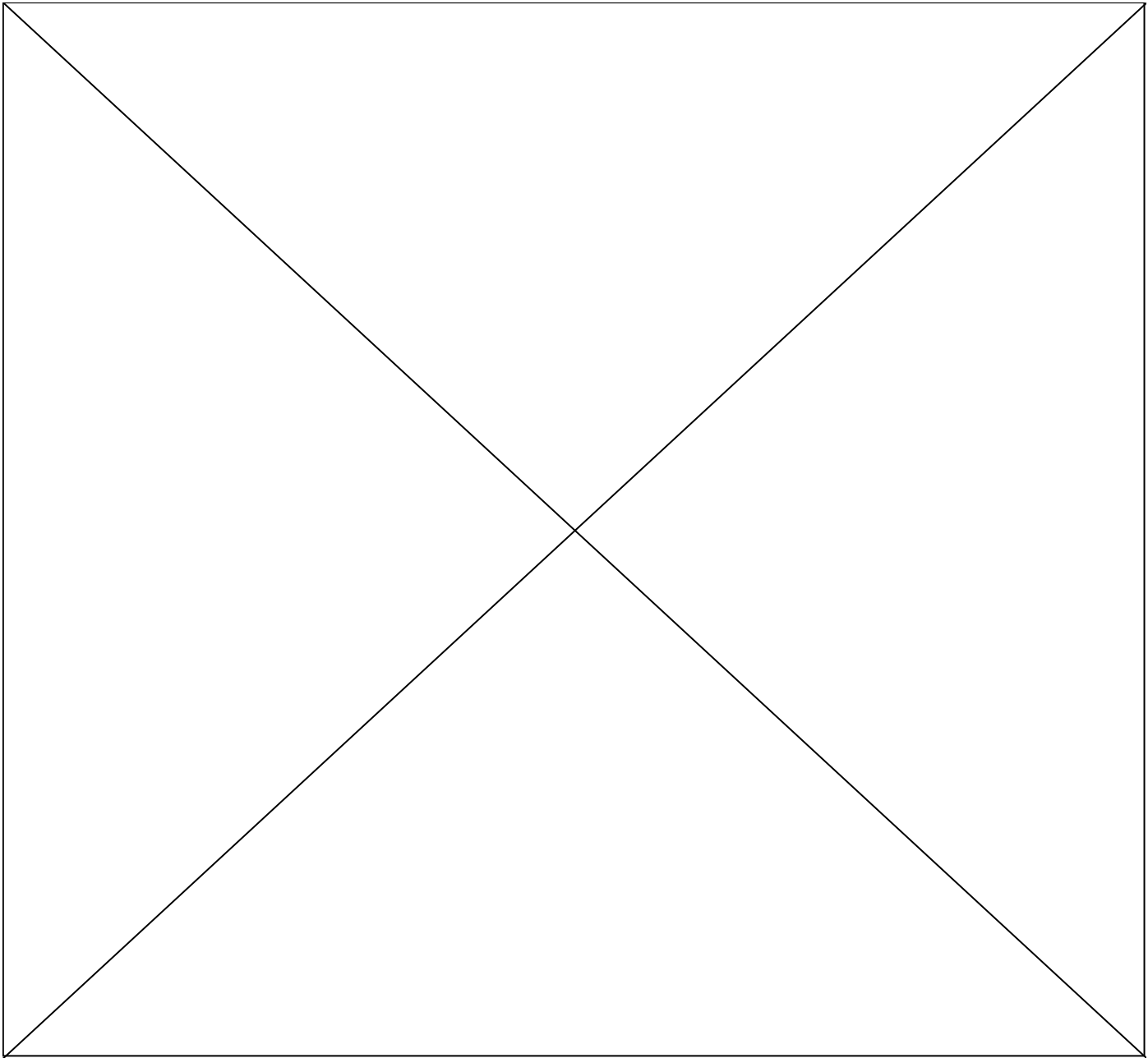
Status	WARNING
Event	Tornado
Area	680.60 Sq. Miles
Counties	Palo Pinto Parker
Storm Motion	East At 30 Mph.
Impacted Population:	58,859
In Homes:	75.26%
In Multi-Family Units:	5.29%
In Mobile Homes:	19.45%
English Spoken Well:	98.41%
English Not Spoken:	1.59%
Urban:	54.88%
Rural:	45.12%
Not Living in Texas in 1995:	4.83%
Source: 2000 Census	

DESCRIPTION

* At 627 PM CST... Trained Weather Spotters Reported A **Tornado** 18 Miles West Of Mineral Wells Or 3 Miles East Of Possum Kingdom Lake... Moving East At 30 Mph.
 In Addition To Tornadoes, **Hail** To The Size Of Softballs And Damaging Winds To 80 Mph Are Likely With This Storm. Do Not Leave Shelter To Use Your Car To Outrun A Tornado. Cars Are Easily Tossed And Crushed By Tornado Winds.

TIMING

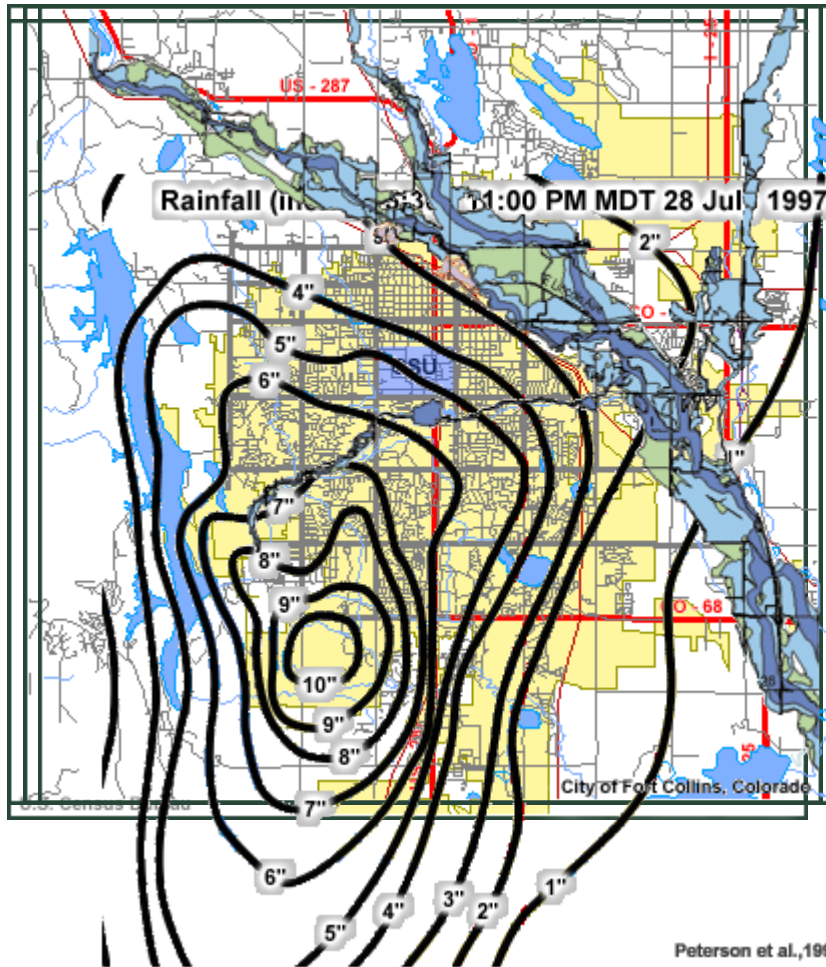
* THE TORNADO IS EXPECTED TO BE NEAR... MINERAL WELLS AROUND 650 PM CST WEATHERFORD AROUND 715 PM CST



Overlay

Fort Collins Overlay Map

Click the check boxes to show or hide map features



Railroads

Streets

Ditches, creeks, rivers, and reservoirs

Show labels

Stormwater basins

Floodplains

Rainfall 7/28/97

Legend

 Floodway

 100-year floodplain

 500-year floodplain