

**CITY AND REGIONAL PLANNING
DEPARTMENT
COLLEGE OF ENVIRONMENTAL DESIGN
KING FAHD UNIVERSITY OF PETROLEUM**

**CRP 514
INTRODUCTION TO GEOGRAPHIC
INFORMATION SYSTEMS**

**GIS Project on the Jubail Industrial Area of
Royal Commission**

By Saleh Al-Enezy

INTRODUCTION

SOURCES TOOLS OF STUDY

MTHODOLOGY

ANALYSIS

CONCLUSION

INTRODUCTION

Geographical Information system formed as a good route for such a representation.

Geographical information systems are computer-based systems that are used represent the map along with the attribute tables attached to it so that information can be retrieved by a mouse click

The study area is An Industrial Area located to the far north corner of Jubail Area, which belongs to the Jubail Royal Commission.

Data Source and Tools Needed

The Data used in this study are taken from the Royal Commission Public publications.

GIS Arc View Program is used to conduct the project

Problem Statement

Royal Commission Industrial Area in Jubail

Divided mainly into

- * Primary Industries
- * Secondary Industries
- * Support Industries
- * Services & Infrastructure
- * Residential Areas

Finding Where are the Most Productive Primary Industries Located by Using the GIS Arc View ?

Methodology

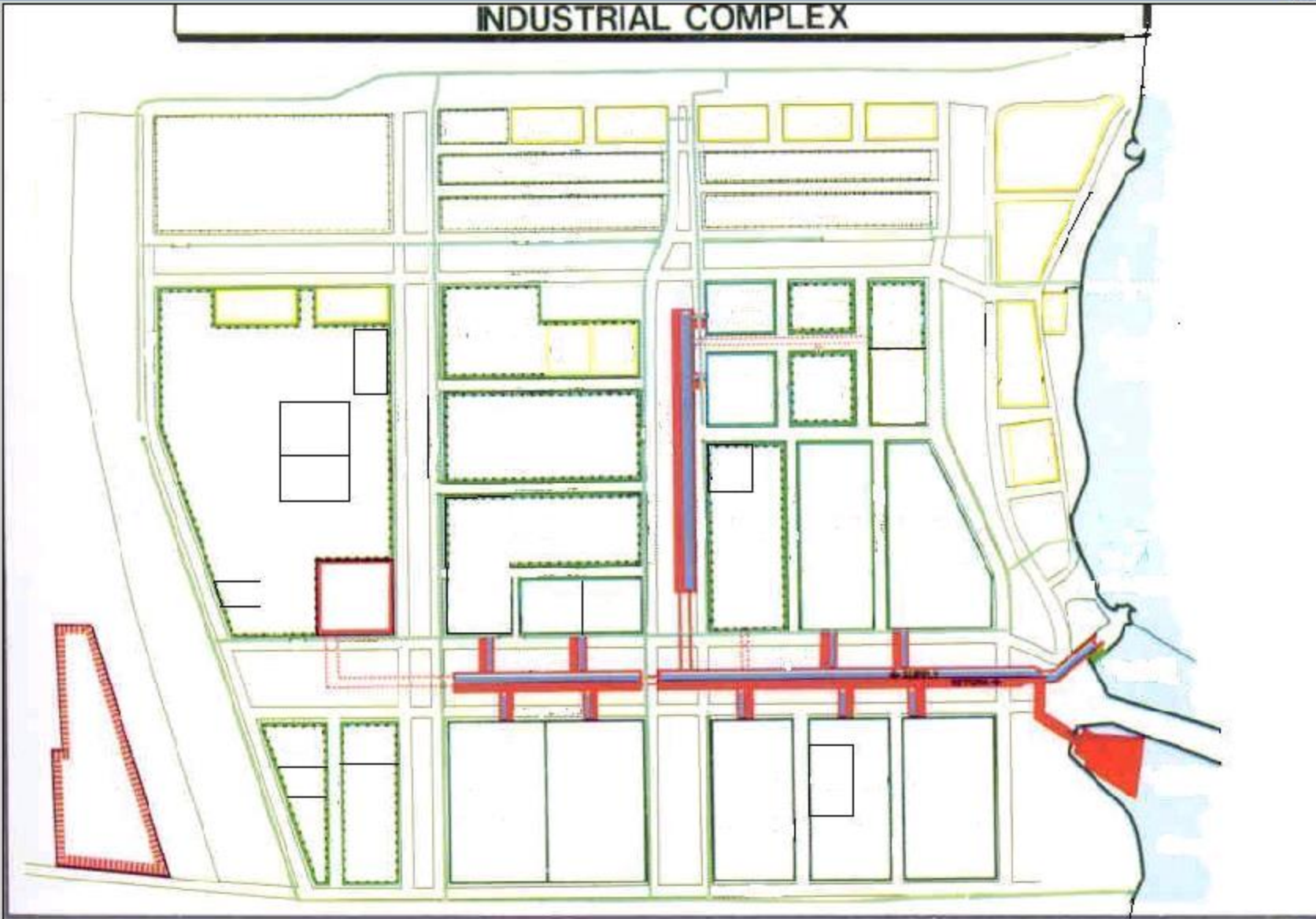
Arc View software is used for the representation after scanning the proposed map in a desired format and saving it. Then, various themes have been created for the features as per the requirement with attractive hotlinks on the features in the theme. Next, descriptive information in the form of tables have been created. Then, analysis and create several bar charts and Lay outs.



ew1

- Support industries.s
- Services & infrastru
- Secondary industrie
- Sea water cooling c
- Road network.shp
- Residential area.sh
- Pimary industries.sl
- King fahad industr.s
- Environmental labo
- Arabian gulf.shp
- Majas .jpg

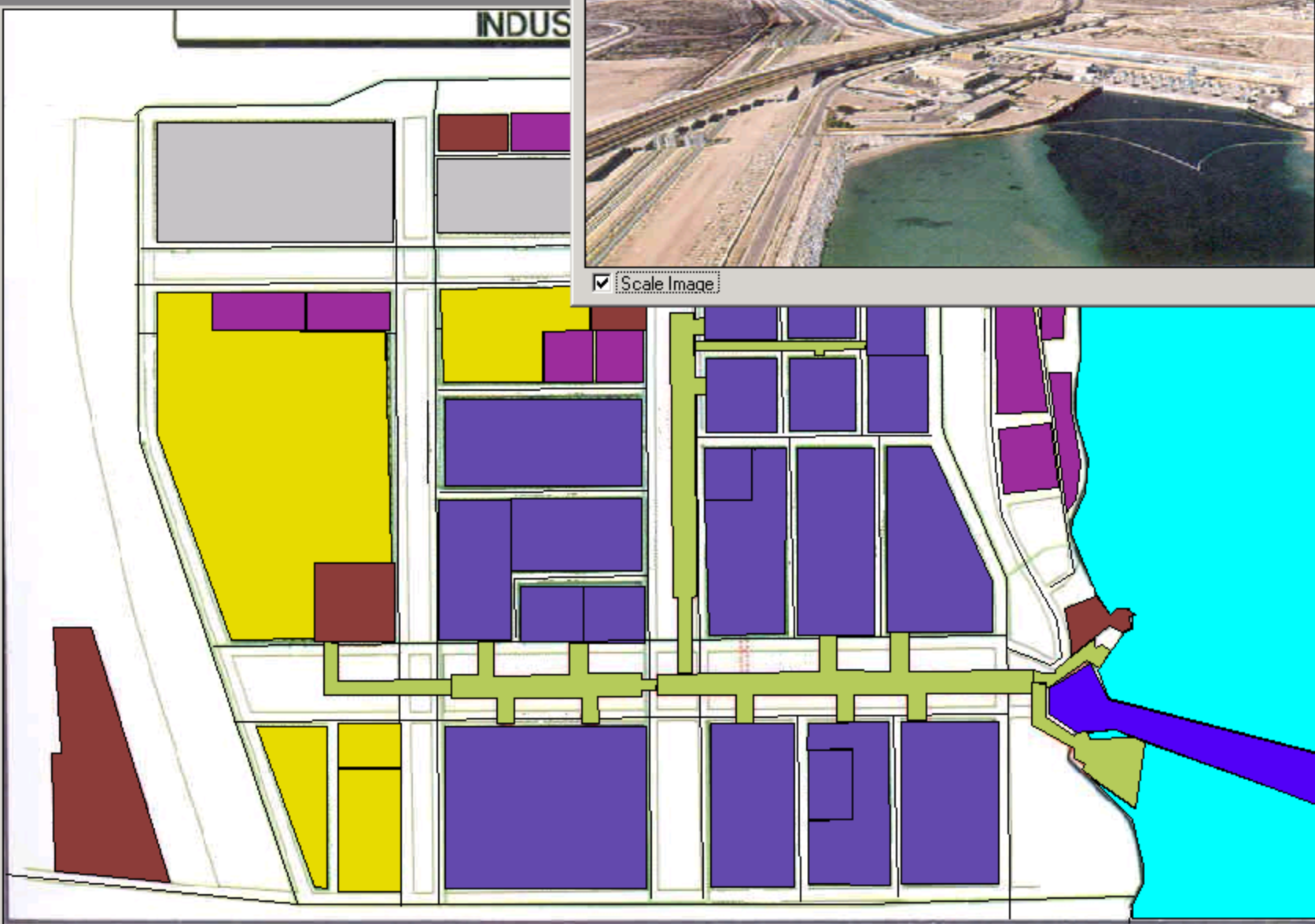
INDUSTRIAL COMPLEX





ew1

- Support industries.s
- Services & infrastru
- Secondary industrie
- Sea water cooling c
- Road network.shp
- Residential area.sh
- Pimary industries.sl
- King fahad industr.s
- Environmental labo
- Arabian gulf.shp
- Majas.jpg



Scale Image



ew2

- Reserved spaces.shp
- Petrochemical-ind.shp
- Metallurgy-ind.shp
- Fertilizer-ind.shp
- Gas manufacturing-ind.shp
- Refinery-ind.shp
- Primary industries.shp
- Majas.jpg

SADAF Saudi Petrochemical Company

Partnership: 50/50 joint venture formed in 1980 with SABIC and Pecten Arabia Co., a subsidiary of Shell Oil Co. (U.S.A.)

On-Stream: 1984
 Feedstocks: Ethane, salt, benzene
 Products and present production capacities:
 Ethylene 820,000 mt/y
 Crude Indust. Ethanol 300,000 mt/y
 Ethylene Dichloride 560,000 mt/y
 Caustic Soda 450,000 mt/y
 Styrene 390,000 mt/y

P.O. Box 10025
 Al-Jubail Industrial City 31961

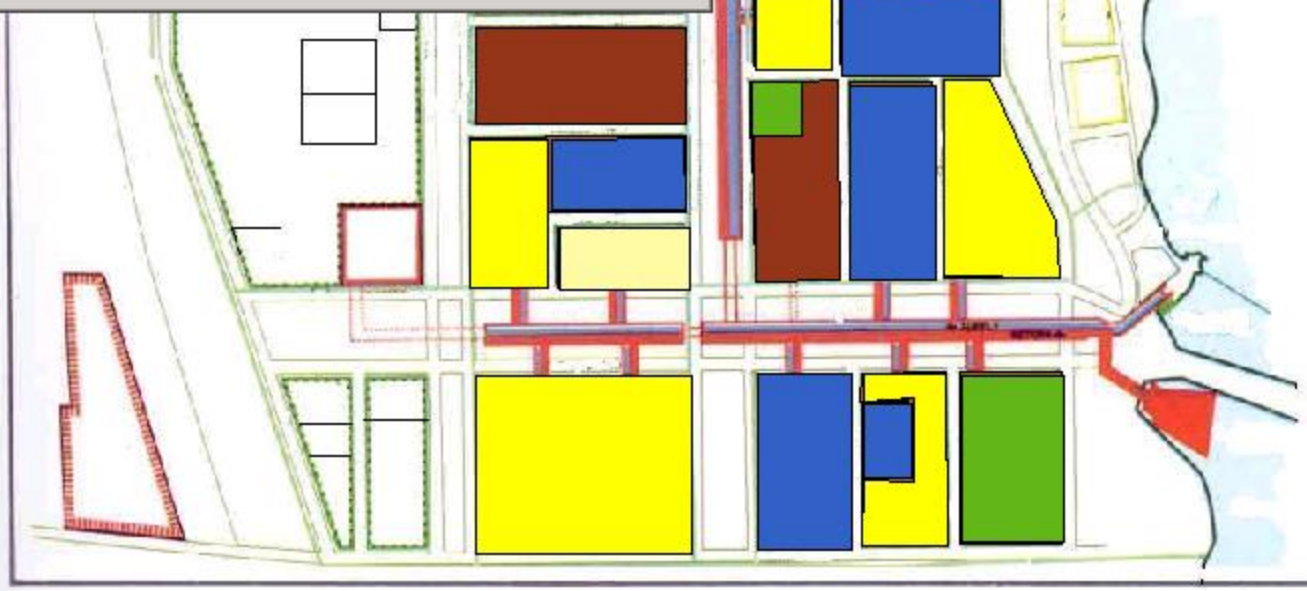
Tel (03) 357-3000
 Tlx 832032 SADAF SJ
 Fax (03) 357-3142

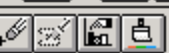
Scale Image

Scale 1:

538.
424.

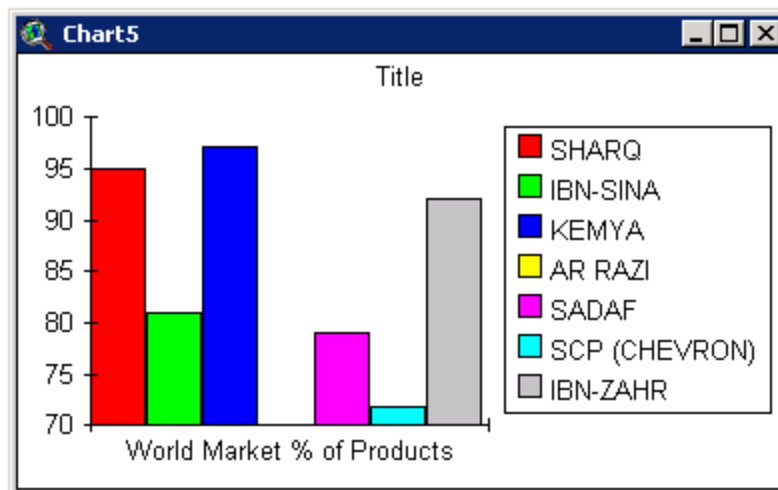
AIL AL-SINAIYAH COMPLEX

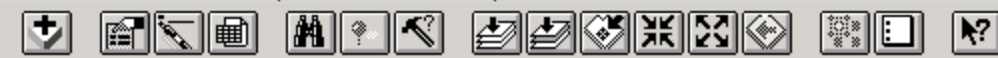




Attributes of Petrochemical-ind.shp

| Local Employment | Non-Saudi Employment | Total Prod. by TPY | Local Market % of Products | World Market % of Products | LandTake | LLDFE Prod. TPY | Ethylene Prod. TPY | Ethanol Prod. TPY |
|------------------|----------------------|--------------------|----------------------------|----------------------------|------------|-----------------|--------------------|-------------------|
| 552 | 99 | 1300000 | 5 | 95 | 105 | 450000 | 0 | 0 |
| 260 | 95 | 1800000 | 19 | 81 | 70 | 0 | 0 | 0 |
| 280 | 72 | 550000 | 3 | 97 | 199 | 550000 | 0 | 0 |
| 354 | 54 | 2130000 | 30 | 70 | 123 | 0 | 0 | 0 |
| 600 | 150 | 4150000 | 21 | 79 | 211 | 0 | 950000 | 330000 |
| 100 | 50 | 1072000 | 28 | 72 | 65 | 0 | 0 | 0 |
| 401 | 228 | 1501000 | 8 | 92 | 106 | 0 | 0 | 0 |
| 0 | 0 | 724000 | 64 | 36 | PETROKEMYA | 0 | 0 | 0 |
| 1002 | 240 | 2481000 | 82 | 18 | 199 | 0 | 1607000 | 0 |





Scale 1:

420
39

ew2

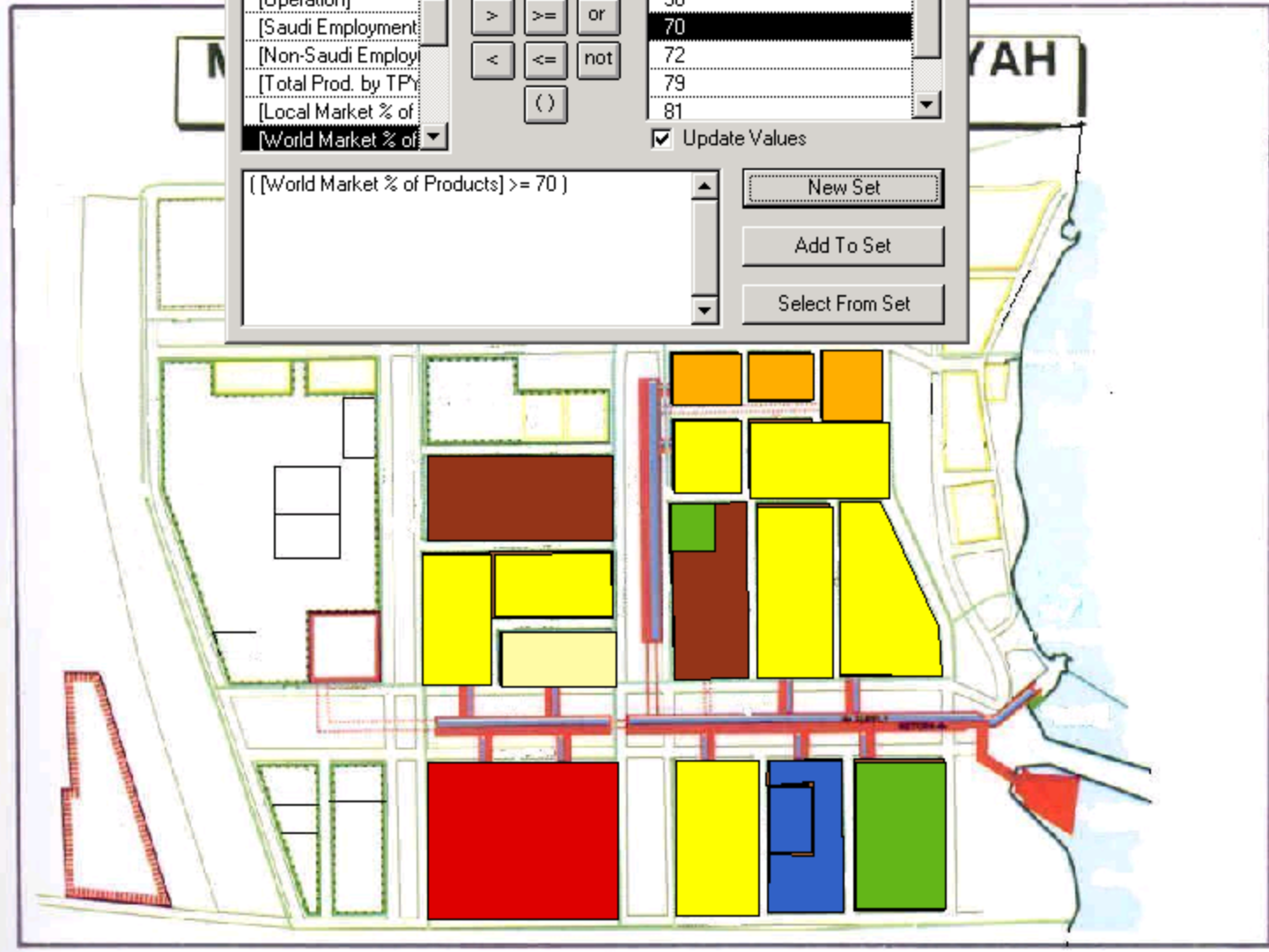
- Reserved spaces.shp
- Petrochemical-ind.shp
- Metallurgy-ind.shp
- Fertilizer-ind.shp
- Gas manufacturing-ind.shp
- Refinery-ind.shp
- Primary industries.shp
- Majas.jpg

Attributes of Petrochemical-ind.shp

| Fields | = | <> | and | Values |
|----------------------|-----|----|-----|--------|
| [Invesrores] | = | <> | and | 18 |
| [Operation] | > | >= | or | 36 |
| [Saudi Employment] | < | <= | not | 70 |
| [Non-Saudi Employ] | () | | | 72 |
| [Total Prod. by TPY] | | | | 79 |
| [Local Market % of] | | | | 81 |
| [World Market % of] | | | | |

Update Values

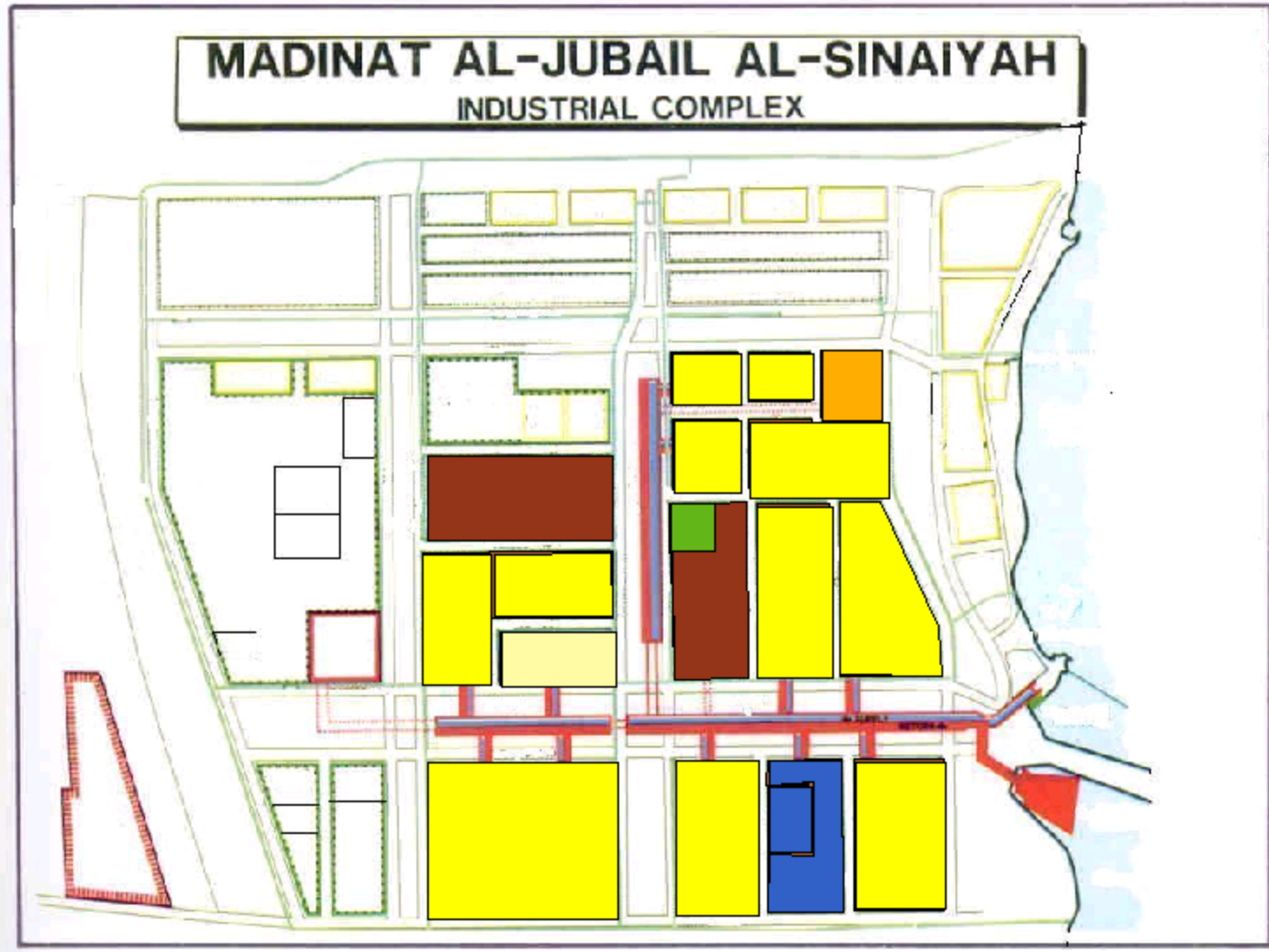
[[World Market % of Products] >= 70]





ew2

- Reserved spaces.shp
- Petrochemical-ind.shp
- Metallurgy-ind.shp
- Fertilizer-ind.shp
- Gas manufacturing-ind.shp
- Refinery-ind.shp
- Primary industries.shp
- Majas.jpg



Thank You.....