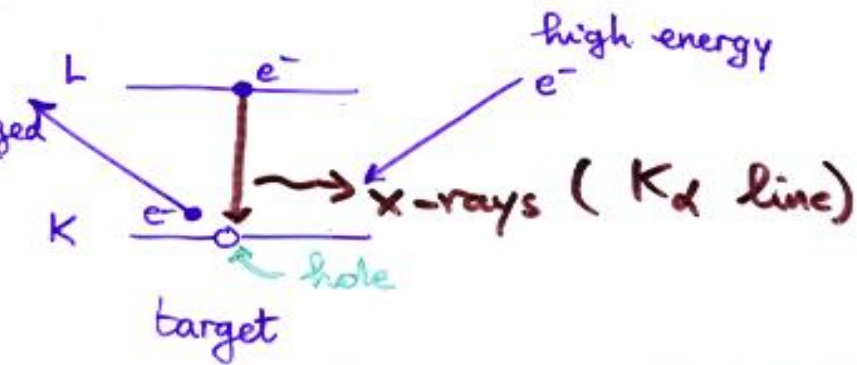


If a metal target is bombarded with high energy electrons then X-rays photons are emitted according to :



If a hole is formed in the K shell, electrons from outer shells fill this hole and we have the K-series of X-rays ; $K_\alpha, K_\beta, K_\gamma, \dots$

If a hole is formed in the L shell, electrons from outer shells fill the hole and we have the L-series of X-rays, $L_\alpha, L_\beta, L_\gamma, \dots$

K_α is from $L \rightarrow K$

L_α is from $M \rightarrow L$

K_β is from $M \rightarrow K$

L_β is from $N \rightarrow L$

K_γ is from $N \rightarrow K$

L_γ is from $O \rightarrow L$

\vdots

\vdots

\vdots