

KING FAHD UNIVERSITY OF PETROLEUM & MINERALS
ACCT & MIS Department
MIS105 – Introduction to Computer Applications

Instructor: Irfan A. Ilyas

Lab Practice – Week#15

1. Use of SubForm Control to represent one-to-many relationships

- A subform is used to show data from two tables simultaneously on one form.
- The two tables must have a relationship defined between them.
- The subform is showing only those records which are related with the current record of the main table.

Hands On: 1

By making use of the subform control, add the grade details of students on the same form.

Steps:

1. Create a form to show all grade records and named it as GradeForm.
2. Create a form for showing student records, named it as StudentInformationForm.
3. Drag the form named GradeForm from database window to the main form, StudentInformationForm.
4. A subform control will automatically be created to be used.
5. Select a the child field and master field names in order to link the records properly [Access will do this linkage automatically in case of a dragging activity].

Shortcut Method

1. Create a one-to-many relationship between the relevant tables.
2. In the table tab, click on the main table (parent table) and click ‘Autoform’ feature.
3. A form having both main table and child table records will be created automatically.

2. Creating Switchboard with Switchboard Manager

What is a *switchboard*?

- A ***user interface form (or switchboard)*** ties the objects in a database together, so that the database is easy to use.
- A switchboard can either be created manually or through switchboard manager.
- The switchboard displays a menu, often a series of menus (multi-level switchboards), which enables a non-technical person to move easily from one Access object to another.

What is *Switchboard Manager*?

- A Wizard program in Microsoft Access which creates the application switchboard automatically
- A Switchboard items table that stores information about each command.

- Prompts developer for information about each menu item
- Access creates a switchboard form that is displayed to the user

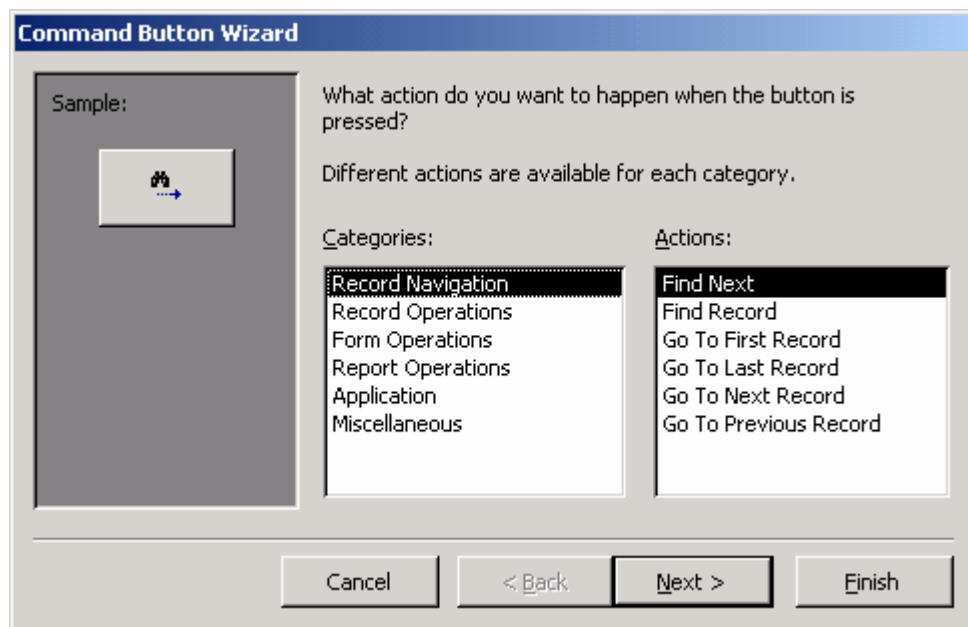
Hands On: 2

Create an example switch board which will connect all the existing forms in the application with one main switchboard form.

3. Use of Automated Code Generation Feature in Microsoft Access

What is automated code generation?

1. Microsoft Access allows the developers to choose for automatically written VBA code for different object event procedures.
2. The code generation wizard will automatically starts after the object is selected and pasted on a form.
3. Below given example is elaborating ion code option selection for Command Button object.
 - a. Categories: Specify the area in which code is required.
 - b. Actions: Specify the available codes on different actions of the selected category.



Hands On: 3

By making use of the automated code generation feature, select code for navigation buttons on StudentForm screen (remove the navigationControl provided with the form).