

THE ALTERNATING GROUP EXPLICIT (AGE) ITERATIVE METHOD FOR SOLVING A LADYZHENSKAYA-TYPE MODEL FOR STATIONARY INCOMPRESSIBLE VISCOUS FLOW *

F. FAIRAG[†] AND M. S. SAHIMI[‡]

Abstract. In this paper, the alternating group explicit (AGE) iterative method is applied to a nonlinear 4th order PDE describing the flow of an incompressible fluid. This equation is of a Ladyzhenskaya-type. The AGE method is shown to be extremely powerful and flexible and affords its users many advantages. Computational results are obtained to demonstrate the applicability of the method on some problems with known solutions. This paper demonstrates that the (AGE) method can be implemented to approximate efficiently solutions to the Navier-Stokes equations and the Ladyzhenskaya equations. Problem with a known solution are considered to test the method and to compare the computed results with the exact values. Streamfunction contours and some plots are displayed showing the main features of the solution.

keywords: Alternating Group Explicit (AGE) method, Ladyzhenskaya equations, Navier-Stokes equations.

C.R. CATEGORIES: G.1.8

1. INTRODUCTION. The (AGE) method is an iterative method which employs the fractional splitting strategy which is applied alternately at each intermediate step on tridiagonal system of difference schemes. Its rate of convergence is governed by the acceleration parameter r . The (AGE) iterative method is applied to a variety of problems involving parabolic and hyperbolic partial differential equations (see [4, 7, 5, 6]). In [14], Sahimi and Evans reformulated the (AGE) method to solve the Navier-Stokes equations in the streamfunction-vorticity form.

In [10, 12, 11], a model for the motion of ideal incompressible viscous flow has been proposed by Ladyzhenskaya. Further studies are made in [2, 3, 1, 9, 13]. In this paper we study computational aspects of a model for stationary flows of a Ladyzhenskaya-type. The studied model is written in terms of the streamfunction ψ and the vorticity ω . The model we work with is as follows:

Consider the following coupled system of partial differential equations in the dependent variable ψ and ω :

$$\Delta\psi = -\omega, \tag{1.1}$$

$$\Delta(\tilde{A}(\psi)\omega) + Re\left(\frac{\partial\psi}{\partial x}\frac{\partial\omega}{\partial y} - \frac{\partial\psi}{\partial y}\frac{\partial\omega}{\partial x}\right) = -g, \tag{1.2}$$

where x and y are independent variables with a set of a boundary conditions prescribed on a square region of the xy -plane. Here Δ is the usual Laplacian operator defined by,

$$\Delta\psi = \frac{\partial^2\psi}{\partial x^2} + \frac{\partial^2\psi}{\partial y^2},$$

where in (1.2) $\tilde{A}(\psi)$ is defined by

$$\tilde{A}(\psi) = 1 + Re \epsilon_1 |\overrightarrow{\Delta}\psi|^{q-2},$$

with Re, ϵ_1 and $q - 2 > 0$ and

$$\overrightarrow{\Delta}\psi = \overrightarrow{grad} (\overrightarrow{grad} \psi) = [\psi_{xx}, \psi_{xy}, \psi_{yx}, \psi_{yy}]^T,$$

and

$$|\overrightarrow{\Delta}\psi| = (\psi_{xx}^2 + 2\psi_{xy}^2 + \psi_{yy}^2)^{\frac{1}{2}}.$$

*This work was supported by KFUPM under grant INT-278. Some of this work was done while the author was on sabbatical leave at UNITEN.

[†]Mathematics Department, King Fahd University of Petroleum & Minerals, Dhahran, 31261 Saudi Arabia (ffairag@kfupm.edu.sa).

[‡]Department of Engineering Sciences and Mathematics, Universiti Tenaga Nasional, 43009 Kajang, Selangor, Malaysia (sallehs@uniten.edu.my).

Note that if $Re = 0$, then equations (1.1) and (1.2) define a biharmonic equation given by,

$$\Delta^2 \psi = \frac{\partial^4 \psi}{\partial x^4} + 2 \frac{\partial^4 \psi}{\partial x^2 \partial y^2} + \frac{\partial^4 \psi}{\partial y^4} = -g.$$

If $Re \neq 0$ and $\epsilon_1 = 0$, then equations (1.1) and (1.2) become the Navier-Stokes equations which describe the basic two dimensional, steady-state, viscous, incompressible flow problem. Here ψ and ω are known respectively as the stream and vorticity functions.

2. FINITE DIFFERENCE DISCRETISATION. Let Ω be a square region of the solution domain defined by,

$$\Omega = \{(x, y) : 0 \leq x \leq L, 0 \leq y \leq L\}. \quad (2.1)$$

A uniformly spaced network whose mesh points are $x_i = ih$, $y_j = jh$, with $h = L/(m+1)$ for $i, j = 0, 1, \dots, m, m+1$ is now superimposed on Ω .

It is observed that if ω is known, then (1.1) is a linear elliptic equation in ψ , while if ψ is known, then (1.2) is a linear elliptic equation in ω . Using central difference approximations, equations (1.1) and (1.2) can now be discretised at the grid point (x_i, y_j) by the following finite difference equations,

$$\begin{aligned} & -\psi_{i-1,j}^{(k+1)} - \psi_{i,j-1}^{(k+1)} - \psi_{i,j+1}^{(k+1)} - \psi_{i+1,j}^{(k+1)} + 4\psi_{i,j}^{(k+1)} = h^2 \omega_{i,j}^{(k)}, \quad (2.2) \\ & -[\tilde{A}_{i-1,j}^{(k+1)} - \alpha(\psi_{i,j-1}^{(k+1)} - \psi_{i,j+1}^{(k+1)})]\omega_{i-1,j}^{(k+1)} - [\tilde{A}_{i,j-1}^{(k+1)} + \alpha(\psi_{i-1,j}^{(k+1)} - \psi_{i+1,j}^{(k+1)})]\omega_{i,j-1}^{(k+1)} \\ & -[\tilde{A}_{i,j+1}^{(k+1)} - \alpha(\psi_{i-1,j}^{(k+1)} - \psi_{i+1,j}^{(k+1)})]\omega_{i,j+1}^{(k+1)} - [\tilde{A}_{i+1,j}^{(k+1)} + \alpha(\psi_{i,j-1}^{(k+1)} - \psi_{i,j+1}^{(k+1)})]\omega_{i+1,j}^{(k+1)} \\ & \qquad \qquad \qquad + 4\tilde{A}_{i,j}^{(k+1)} \omega_{i,j}^{(k+1)} = h^2 g_{i,j}, \quad (2.3) \end{aligned}$$

where $\alpha = Re/4$ and

$$\tilde{A}_{i,j}^{(k+1)} = 1 + Re \epsilon_1 |\vec{\Delta} \psi_{i,j}^{(k+1)}|^{q-2} \quad \text{and } i, j = 1, 2, \dots, m, \quad (2.4)$$

and

$$|\vec{\Delta} \psi_{i,j}^{(k+1)}| = \left[\left([\psi_{xx}]_{ij}^{(k+1)} \right)^2 + 2 \left([\psi_{xy}]_{ij}^{(k+1)} \right)^2 + \left([\psi_{yy}]_{ij}^{(k+1)} \right)^2 \right]^{\frac{1}{2}},$$

and

$$\begin{aligned} [\psi_{xx}]_{ij}^{(k+1)} &= \frac{1}{h^2} [\psi_{i+1,j}^{(k+1)} - 2\psi_{i,j}^{(k+1)} + \psi_{i-1,j}^{(k+1)}] \\ [\psi_{xy}]_{ij}^{(k+1)} &= \frac{1}{4h^2} [\psi_{i+1,j+1}^{(k+1)} - \psi_{i-1,j+1}^{(k+1)} - \psi_{i+1,j-1}^{(k+1)} + \psi_{i-1,j-1}^{(k+1)}] \\ [\psi_{yy}]_{ij}^{(k+1)} &= \frac{1}{h^2} [\psi_{i,j+1}^{(k+1)} - 2\psi_{i,j}^{(k+1)} + \psi_{i,j-1}^{(k+1)}]. \end{aligned}$$

Equation (2.2) and (2.3) suggest that we start with an initial guess $\omega^{(0)}$ and use equation (2.2) to approximate ψ and call this $\psi^{(1)}$ and use this to solve for ω using equation (2.3) and call this as $\omega^{(1)}$. Continue this computations until you reach a specific convergence criterion. We will call this process an outer iteration.

We will study in detail the finite-difference analogue of the vorticity equation (2.3) to derive the AGE equations for its solution. Then, the AGE equations for the streamfunction equation (2.2) will follow, since equation (2.2) is similar to equation (2.3) but with different coefficients.

3. THE AGE METHOD. If we use the boundary conditions $\psi = 0$ and $\partial^2 \psi / \partial \hat{n}^2 = 0$ where \hat{n} denotes the normal to the boundary $\partial\Omega$ of Ω , then our problem amounts to solving successively (1.1) and (1.2) with $\psi = 0$ and $\omega = 0$ along $\partial\Omega$. First, let us rewrite Equation (2.3) in matrix form as:

$$\begin{aligned} & A \underline{\omega}_{(r)}^{k+1} = \underline{f}, \\ \text{where, } & \underline{\omega}_{(r)} = (\underline{\omega}_1, \underline{\omega}_2, \dots, \underline{\omega}_m)^T \quad \text{with } \omega_j = (\omega_{1j}, \omega_{2j}, \dots, \omega_{mj})^T, \end{aligned}$$

where,

$$\hat{A}_j = \begin{bmatrix} 2 & \beta_{1,j+1} & & & \\ \hat{\beta}_{2,j+1} & 2 & \beta_{2,j+1} & & \\ & \ddots & \ddots & \ddots & \\ & & \hat{\beta}_{m-1,j+1} & 2 & \beta_{m-1,j+1} \\ & & & \hat{\beta}_{m,j+1} & 2 \end{bmatrix}_{m \times m}, \quad j = 1, 2, \dots, m;$$

and

$$D = \text{diag}(2, 2, \dots, 2).$$

The AGE Douglas fractional formulae then are written in the following form,

$$(G_1 + rI)\underline{\omega}_{(r)}^{(p+1/4)} = ((rI + G_1) - 2A)\underline{\omega}_{(r)}^{(p)} + 2\underline{f}, \quad (3.6)$$

$$(G_2 + rI)\underline{\omega}_{(r)}^{(p+1/2)} = G_2\underline{\omega}_{(r)}^{(p)} + r\underline{\omega}_{(r)}^{(p+1/4)}, \quad (3.7)$$

$$(G_3 + rI)\underline{\omega}_{(r)}^{(p+3/4)} = G_3\underline{\omega}_{(r)}^{(p)} + r\underline{\omega}_{(r)}^{(p+1/2)}, \quad (3.8)$$

$$(G_4 + rI)\underline{\omega}_{(r)}^{(p+1)} = G_4\underline{\omega}_{(r)}^{(p)} + r\underline{\omega}_{(r)}^{(p+3/4)}. \quad (3.9)$$

In equations (3.6 - 3.9), p represents the index for the inner iteration procedure and r is the acceleration parameter. Without loss of generality, we assume that m is odd.

From equations (3.6 - 3.9), we will write $\omega_{ij}^{p+1/4}, \omega_{ij}^{p+1/2}, \omega_{ij}^{p+3/4}, \omega_{ij}^{p+1}$ in explicit form. We start by multiplying equation (3.6) by the inverse of the matrix $(rI + G_1)$. But the matrix $(rI + G_1)$ is a block-diagonal matrix of 2×2 or 1×1 matrices. Fortunately, we have a closed form for the inverse of $(rI + G_1)$. After some mathematical manipulations, we write $\omega_{ij}^{p+1/4}$ in an explicit form in terms of $\omega_{ij}^{(p-1)}, \beta_{ij}, \hat{\beta}_{ij}, \mu_{ij}, \hat{\mu}_{ij}, f_{ij}$. Then, we repeat the same process to write $\omega_{ij}^{(p+1/2)}$ by using equation (3.7). To write $\omega_{ij}^{(p+3/4)}$ and $\omega_{ij}^{(p+1)}$ in explicit form, we start by reordering the mesh points column-wise parallel to the y-axis then we apply the same process. Now, let us start at $(p+1)$ th iterate.

(i) At the $(p+1/4)$ th iterate

From (3.6) we have

$$\underline{\omega}_{(r)}^{(p+1/4)} = (G_1 + rI)^{-1} [((rI + G_1) - 2A)\underline{\omega}_{(r)}^{(p)} + 2\underline{f}].$$

We find that,

$$rI + G_1 = \text{diag}(\hat{C}_1, \hat{C}_2, \dots, \hat{C}_{m-1}, \hat{C}_m)_{(m^2 \times m^2)}, \quad (3.10)$$

where

$$\hat{C}_j = \text{diag}(r_1, \hat{G}_{2,j}, \hat{G}_{4,j}, \dots, \hat{G}_{m-1,j})_{(m \times m)} \quad \text{for } j = 1, 3, \dots, m(\text{odd}),$$

and

$$\hat{C}_j = \text{diag}(\hat{G}_{1,j}, \hat{G}_{3,j}, \dots, \hat{G}_{m-2,j}, r_1)_{m \times m}, \quad \text{for } j = 2, 4, \dots, m(\text{even}),$$

with

$$r_1 = r + 1,$$

and

$$\hat{G}_{i,j} = \begin{bmatrix} r_1 & \beta_{i,j+1} \\ \hat{\beta}_{i+1,j+1} & r_1 \end{bmatrix}, \quad i = 1, 2, \dots, m-1.$$

Since $rI + G_1$ is block diagonal, (3.10) gives,

$$(rI + G_1)^{-1} = \text{diag}(\hat{C}_1^{-1}, \hat{C}_2^{-1}, \dots, \hat{C}_{m-1}^{-1}, \hat{C}_m^{-1})_{(m^2 \times m^2)}.$$

Defining

$$\begin{aligned} D_i &= \hat{C}_i - 2A_i, & i &= 1, 2, \dots, m; \\ E_i &= -2C_i, & i &= 2, 3, \dots, m; \\ F_i &= -2B_i, & i &= 1, 2, \dots, m-1; \end{aligned}$$

we obtain the following set of equations at the $(p+1/4)^{\text{th}}$ iterate,

$$\underline{\omega}_{1(r)}^{(p+1/4)} = \hat{C}_1^{-1}(D_1 \underline{\omega}_{1(r)}^{(p)} + F_1 \underline{\omega}_{2(r)}^{(p)} + 2\underline{f}_1), \quad (3.11)$$

$$\underline{\omega}_{j(r)}^{(p+1/4)} = \hat{C}_j^{-1}(E_j \underline{\omega}_{j-1(r)}^{(p)} + D_j \underline{\omega}_{j(r)}^{(p)} + F_j \underline{\omega}_{j+1(r)}^{(p)} + 2\underline{f}_j), \quad j = 2, 3, \dots, m-2, m-1, \quad (3.12)$$

and

$$\underline{\omega}_{m(r)}^{(p+1/4)} = \hat{C}_m^{-1}(E_m \underline{\omega}_{m-1(r)}^{(p)} + D_m \underline{\omega}_{m(r)}^{(p)} + 2\underline{f}_m), \quad (3.13)$$

and

$$\begin{aligned} \hat{C}_j^{-1} &= \text{diag}\left(\frac{1}{r_1}, (\hat{G}_{2,j})^{-1}, ((\hat{G}_{4,j})^{-1}, \dots, ((\hat{G}_{m-1,j})^{-1})_{(m \times m)}, \quad \text{for } j = 1, 3, \dots, m; \\ \hat{C}_j^{-1} &= \text{diag}((\hat{G}_{1,j})^{-1}, ((\hat{G}_{3,j})^{-1}, \dots, ((\hat{G}_{m-2,j})^{-1}, \frac{1}{r_1})_{(m \times m)}, \quad \text{for } j = 2, 4, \dots, m-1; \end{aligned}$$

with

$$(\hat{G}_{i,j})^{-1} = \frac{1}{\Delta_{i,j}} \begin{bmatrix} r_1 & -\beta_{i,j+1} \\ -\hat{\beta}_{i+1,j+1} & r_1 \end{bmatrix},$$

and

$$\Delta_{i,j} = r_1^2 - \beta_{i,j+1} \hat{\beta}_{i+1,j+1}.$$

Writing equation (3.11) component-wise gives

$$\omega_{11}^{(p+1/4)} = 2\left[\frac{r_2}{2}\omega_{11}^{(p)} - \beta_{12}\omega_{21}^{(p)} - \mu_{11}\omega_{21}^{(p)} + f_{11}\right]/r_1, \quad (3.14)$$

$$\begin{aligned} \omega_{i,1}^{(p+1/4)} &= 2(a_i \omega_{i-1,1}^{(p)} + b_i \omega_{i,1}^{(p)} + c_i \omega_{i+1,1}^{(p)} + d_i \omega_{i+2,1}^{(p)} + e_i \omega_{i,2}^{(p)} \\ &\quad + f_i \omega_{i+1,2}^{(p)} + g_i)/\Delta_{i,1}, \end{aligned} \quad (3.15)$$

$$\begin{aligned} \omega_{i+1,1}^{(p+1/4)} &= 2(\bar{a}_i \omega_{i-1,1}^{(p)} + \bar{b}_i \omega_{i,1}^{(p)} + b_i \omega_{i+1,1}^{(p)} + \bar{d}_i \omega_{i+2,1}^{(p)} + \bar{e}_i \omega_{i,2}^{(p)} \\ &\quad + \bar{f}_i \omega_{i+1,2}^{(p)} + \bar{g}_i)/\Delta_{i,1}, \quad \text{for } i = 2, 4, \dots, m-3, m-1, \end{aligned} \quad (3.16)$$

where

$$\begin{aligned} a_i &= -r_1 \hat{\beta}_{i,2}, b_i = (r_1 r_2 + \beta_{i,2} \hat{\beta}_{i+1/2})/2, c_i = -r_3 \beta_{i,2}, \\ e_i &= -r_1 \mu_{i,1}, f_i = \beta_{i,2} \mu_{i+1,1}, g_i = r_1 f_{i,1} - \beta_{i,2} f_{i+1,1}, \\ \bar{a}_i &= \hat{\beta}_{i,2} \hat{\beta}_{i+1,2}, \bar{b}_i = -r_3 \hat{\beta}_{i+1,2}, \bar{e} = \hat{\beta}_{i+1,2} \mu_{i,1}, \\ \bar{f}_i &= -r_1 \mu_{i+1,1}, \bar{g}_i = r_1 f_{i+1,1} - \hat{\beta}_{i+1,2} f_{i,1}, \\ r_2 &= r_1 - 8, r_3 = r_1 - 4, \\ d_i &= \begin{cases} \beta_{i,2} \beta_{i+1,2}, & \text{if } i \neq m-1; \\ 0, & \text{if } i = m-1, \end{cases} \\ \bar{d}_i &= \begin{cases} -r_1 \beta_{i+1,2}, & \text{if } i \neq m-1; \\ 0, & \text{if } i = m-1. \end{cases} \end{aligned}$$

In the same manner, writing equations (3.12) and (3.13) component-wise give

$$\left\{ \begin{array}{l} \omega_{i,j}^{(p+1/4)} = 2(r_1 q_{i,j} - \beta_{i,j+1} \bar{q}_{ij}) / \Delta_{ij} \\ \omega_{i+1,j}^{(p+1/4)} = 2(-\hat{\beta}_{i+1,j+1} q_{ij} + r_1 \bar{q}_{ij}) / \Delta_{ij} \end{array} \right\}, j = 2, 4, \dots, m-1; i = 1, 3, \dots, m-2, \quad (3.17)$$

$$\omega_{m,j}^{(p+1/4)} = 2(-\mu_{mj} \omega_{m,j-1}^{(p)} - \hat{\beta}_{m,j+1} \omega_{m-1,j}^{(p)} + \frac{r_2}{2} \omega_{mj}^{(p)} - \mu_{mj} \omega_{m,j+1}^{(p)} + f_{m,j}) / r_1, \\ \text{for } j = 2, 4, \dots, m-1, \quad (3.18)$$

where

$$q_{ij} = \begin{cases} -\mu_{i,j} \omega_{i,j-1}^{(p)} - \hat{\beta}_{i,j+1} \omega_{i-1,j}^{(p)} + \frac{r_2}{2} \omega_{i,j}^{(p)} - \frac{\beta_{i,j+1}}{2} \omega_{i+1,j}^{(p)} - \mu_{i,j} \omega_{i,j+1}^{(p)} + f_{i,j}, & \text{if } i \neq 1; \\ -\mu_{i,j} \omega_{i,j-1}^{(p)} + \frac{r_2}{2} \omega_{i,j}^{(p)} - \frac{\beta_{i,j+1}}{2} \omega_{i+1,j}^{(p)} - \mu_{i,j} \omega_{i,j+1}^{(p)} + f_{i,j}, & \text{if } i = 1, \end{cases}$$

$$\bar{q}_{ij} = \begin{cases} -\hat{\mu}_{i+1,j} \omega_{i+1,j-1}^{(p)} - \frac{\hat{\beta}_{i+1,j+1}}{2} \omega_{i,j}^{(p)} + \frac{r_2}{2} \omega_{i+1,j}^{(p)} - \beta_{i+1,j+1} \omega_{i+2,j}^{(p)} - \\ \mu_{i+1,j} \omega_{i+1,j+1}^{(p)} + f_{i+1,j}, & \text{if } i \neq m-1, \\ -\hat{\mu}_{i+1,j} \omega_{i+1,j-1}^{(p)} - \frac{\hat{\beta}_{i+1,j+1}}{2} \omega_{i,j}^{(p)} + \frac{r_2}{2} \omega_{i+1,j}^{(p)} + f_{i+1,j}, & \text{if } i = m-1 \end{cases}$$

and

$$\left\{ \begin{array}{l} \omega_{1j}^{(p+1/4)} = 2(-\hat{\mu}_{1j} \omega_{1,j-1}^{(p)} + \frac{r_2}{2} \omega_{1j}^{(p)} - \beta_{1,j+1} \omega_{2j}^{(p)} - \mu_{1j} \omega_{1,j+1}^{(p)} + f_{1j}) / r_1, \\ \text{for } j = 3, 5, \dots, m-2 \\ \omega_{1,m}^{(p+1/4)} = 2(-\hat{\mu}_{1m} \omega_{1,m-1}^{(p)} + \frac{r_2}{2} \omega_{1m}^{(p)} - \beta_{1,m+1} \omega_{2m}^{(p)} + f_{1m}) / r_1 \end{array} \right\}, \quad (3.19)$$

$$\left\{ \begin{array}{l} \omega_{i,j}^{(p+1/4)} = 2(r_1 q_{ij} - \beta_{i,j+1} \bar{q}_{ij}) / \Delta_{ij} \\ \omega_{i+1,j}^{(p+1/4)} = 2(-\hat{\beta}_{i+1,j+1} q_{ij} + r_1 \bar{q}_{ij}) / \Delta_{ij} \end{array} \right\}, j = 3, 5, \dots, m-2, m; i = 2, 4, \dots, m-3, m-1, \quad (3.20)$$

(ii) At the $(p+1/2)$ th iterate

Equation (3.7) gives

$$\underline{\omega}_{(r)}^{(p+1/2)} = (G_2 + rI)^{-1} (G_2 \underline{\omega}_{(r)}^{(p)} + r \underline{\omega}_{(r)}^{(p+1/4)}). \quad (3.21)$$

We define,

$$(rI + G_2) = \text{diag}(\hat{C}_1, \hat{C}_2, \dots, \hat{C}_{m-1}, \hat{C}_m)_{(m^2 \times m^2)},$$

where

$$\hat{C}_j = \text{diag}(\hat{C}_{1,j}, \hat{C}_{3,j}, \dots, \hat{C}_{m-2,j}, r_1)_{(m \times m)}, \quad j = 1, 3, \dots, m(\text{odd}),$$

and

$$\hat{C}_j = \text{diag}(r_1, \hat{G}_{2,j}, \hat{G}_{4,j}, \dots, \hat{G}_{m-1,j})_{(m \times m)}, \quad j = 2, 4, \dots, m-1(\text{even}),$$

Denoting $\bar{C}_j \equiv \hat{C}_j$ but the diagonal element r_1 replaced by 1, equation (3.21) becomes

$$\underline{\omega}_{j(r)}^{(p+1/2)} = (\hat{C}_j)^{-1} (\bar{C}_j \underline{\omega}_{j(r)}^{(p)} + r \underline{\omega}_{j(r)}^{(p+1/4)}), \quad j = 1, 2, \dots, m,$$

which leads to

$$\left\{ \begin{array}{l} \omega_{i,j}^{(p+1/2)} = (r_1 s_{i,j} - \beta_{i,j+1} \bar{s}_{i,j}) / \Delta_{i,j}, \\ \omega_{i+1,j}^{(p+1/2)} = (-\hat{\beta}_{i+1,j+1} s_{i,j} + r_1 \bar{s}_{i,j}) / \Delta_{i,j}, \end{array} \right\}, j = 1, 3, \dots, m; i = 1, 3, \dots, m-2, \quad (3.22)$$

with

$$\hat{H}_{i,j} = \begin{bmatrix} r_1 & \mu_{i,j} \\ \hat{\mu}_{i,j+1} & r_1 \end{bmatrix}, \quad j = 1, 2, \dots, m-1.$$

Denoting $P_i \equiv H_i$ but with the diagonal element r_1 replaced by 1, equation (3.26) then becomes

$$\underline{\omega}_{(c)}^{(p+3/4)} = H_i^{-1}(P_i \underline{\omega}_{i(c)}^{(p)} + r \underline{\omega}_{i(c)}^{(p+1/2)}), \quad i = 1, 2, \dots, m,$$

where

$$H_i^{-1} = \text{diag}\left(\frac{1}{r_1}, (\hat{H}_{i,2})^{-1}, (\hat{H}_{i,4})^{-1}, \dots, (\hat{H}_{i,m-1})^{-1}\right)_{(m \times m)}, \quad i = 1, 3, \dots, m;$$

and

$$H_i^{-1} = \text{diag}\left((\hat{H}_{i,1})^{-1}, (\hat{H}_{i,3})^{-1}, \dots, (\hat{H}_{i,m-1})^{-1}, \frac{1}{r_1}\right)_{(m \times m)}, \quad i = 2, 4, \dots, m-1;$$

with

$$(\hat{H}_{i,j})^{-1} = \frac{1}{\hat{\Delta}_{i,j}} \begin{bmatrix} r_1 & -\mu_{i,j} \\ -\hat{\mu}_{i,j+1} & r_1 \end{bmatrix},$$

and

$$\hat{\Delta}_{j,i} = r_1^2 - \mu_{i,j} \hat{\mu}_{i,j+1}.$$

This results in the following equations for the computation at the current intermediate level

$$\omega_{i,1}^{(p+3/4)} = (\omega_{i,1}^{(p)} + r \omega_{i,1}^{(p+1/2)})/r_1, \quad i = 1, 3, \dots, m, \quad (3.27)$$

$$\left\{ \begin{array}{l} \omega_{i,j}^{(p+3/4)} = (r_1 v_{i,j} - \mu_{i,j} \bar{v}_{i,j})/\hat{\Delta}_{j,i}, \text{ and} \\ \omega_{i,j+1}^{(p+3/4)} = (-\mu_{i,j+1} v_{i,j} + r_1 \bar{v}_{i,j})/\hat{\Delta}_{j,i}, \end{array} \right\}, \quad i = 1, 3, \dots, m; j = 2, 4, \dots, m-1, \quad (3.28)$$

and

$$\left\{ \begin{array}{l} \omega_{i,j}^{(p+3/4)} = (r_1 v_{i,j} - \mu_{i,j} \bar{v}_{i,j})/\hat{\Delta}_{j,i}, \text{ and} \\ \omega_{i,j+1}^{(p+3/4)} = (-\mu_{i,j+1} v_{i,j} + r_1 \bar{v}_{i,j})/\hat{\Delta}_{j,i}, \end{array} \right\}, \quad i = 2, 4, \dots, m-1; j = 1, 3, \dots, m-2, \quad (3.29)$$

$$\omega_{i,m}^{(p+3/4)} = (\omega_{i,m}^{(p)} + r \omega_{i,m}^{(p+1/2)})/r_1, \quad i = 2, 4, \dots, m-1, \quad (3.30)$$

where

$$\begin{aligned} v_{i,j} &= \omega_{i,j}^{(p)} + \mu_{i,j} \omega_{i,j+1}^{(p)} + r \omega_{i,j}^{(p+1/2)}, \\ \bar{v}_{i,j} &= \omega_{i,j+1}^{(p)} + \hat{\mu}_{i,j+1} \omega_{i,j}^{(p)} + r \omega_{i,j+1}^{(p+1/2)}. \end{aligned}$$

(iv) At the $(p+1)$ th iterate

Equation (3.9) is now transformed to

$$(\bar{G}_4 + rI) \underline{\omega}_{(c)}^{(p+1)} = \bar{G}_4 \underline{\omega}_{(c)}^{(p)} + r \underline{\omega}_{(c)}^{(p+3/4)},$$

or

$$\underline{\omega}_{(c)}^{(p+1)} = (\bar{G}_4 + rI)^{-1} (\bar{G}_4 \underline{\omega}_{(c)}^{(p)} + r \underline{\omega}_{(c)}^{(p+3/4)}), \quad (3.31)$$

we have

$$(\overline{G}_4 + rI) = \text{diag}(\overline{H}_1, \overline{H}_2, \dots, \overline{H}_{m-1}, \overline{H}_m)_{(m^2 \times m^2)},$$

where

$$\overline{H}_i = \text{diag}(\hat{H}_{i,1}, \hat{H}_{i,3}, \dots, \hat{H}_{i,m-2}, r_1)_{(m \times m)}, \quad i = 1, 3, \dots, m(\text{odd}),$$

and

$$\overline{H}_i = \text{diag}(r_1, \hat{H}_{i,2}, \hat{H}_{i,4}, \dots, \hat{H}_{i,m-1})_{(m \times m)}, \quad i = 2, 4, \dots, m(\text{even}).$$

Denoting $Q_i \equiv \overline{H}_i$ (with the diagonal element r_1 replaced by 1), equation (3.31) can be written as

$$\underline{\omega}_{i(c)}^{(p+1)} = (\overline{H}_i)^{-1} (Q_i \underline{\omega}_{i(c)}^{(p)} + r \underline{\omega}_{i(c)}^{(p+3/4)}), \quad i = 1, 2, \dots, m,$$

and as at the previous iterate, we obtain the following equations for computation

$$\omega_{i,j}^{(p+1)} = (r_1 z_{i,j} - \mu_{i,j} \bar{z}_{i,j}) / \hat{\Delta}_{j,i}, \quad (3.32)$$

$$\omega_{i,j+1}^{(p+1)} = (-\hat{\mu}_{i,j+1} z_{i,j} + r_1 \bar{z}_{i,j}) / \Delta_{j,i}, \quad i = 1, 3, \dots, m, j = 1, 3, \dots, m-2 \quad (3.33)$$

$$\omega_{i,m}^{(p+1)} = (\omega_{i,m}^{(p)} + r \omega_{i,m}^{(p+3/4)}) / r_1, \quad i = 1, 3, \dots, m, \quad (3.34)$$

and

$$\omega_{i,1}^{(p+1)} = (\omega_{i,1}^{(p)} + r \omega_{i,1}^{(p+3/4)}) / r_1, \quad i = 2, 4, \dots, m-1, \quad (3.35)$$

$$\omega_{i,j}^{(p+1)} = (r_1 z_{i,j} - \mu_{i,j} \bar{z}_{i,j}) / \hat{\Delta}_{j,i}, \quad (3.36)$$

$$\omega_{i,j+1}^{(p+1)} = (-\hat{\mu}_{i,j+1} z_{i,j} + r_1 \bar{z}_{i,j}) / \hat{\Delta}_{j,i}, \quad i = 2, 4, \dots, m-1, j = 2, 4, \dots, m-1, \quad (3.37)$$

where

$$z_{i,j} = \omega_{i,j}^{(p)} + \mu_{i,j} \omega_{i,j+1}^{(p)} + r \omega_{i,j}^{(p+3/4)},$$

$$\bar{z}_{i,j} = \omega_{i,j+1}^{(p)} + \hat{\mu}_{i,j+1} \omega_{i,j}^{(p)} + r \omega_{i,j+1}^{(p+3/4)}.$$

Hence, we write $\omega_{ij}^{(p+1/4)}$, $\omega_{ij}^{(p+1/2)}$, $\omega_{ij}^{(p+3/4)}$, $\omega_{ij}^{(p+1)}$ in an explicit equations. These equations are listed in the following table.

TABLE 3.1
Equations for all four intermediate steps

Intermediate step	Equation Number
$\omega_{ij}^{p+1/4}$	(3.14), (3.15), (3.16), (3.17), (3.18), (3.19), (3.20)
$\omega_{ij}^{p+1/2}$	(3.22), (3.23), (3.24), (3.25)
$\omega_{ij}^{p+3/4}$	(3.27), (3.28), (3.29), (3.30)
ω_{ij}^{p+1}	(3.32), (3.33), (3.34), (3.35), (3.36), (3.37)

4. NUMERICAL ALGORITHM. From Section(3), an algorithm can now be formulated to solve the equation (1.2). Given all the data of the problem and an initial approximation ω_{ij}^{old} , INNER-AGE ALGORITHM will compute a better approximation ω_{ij}^{new} .

After we state the INNER-AGE ALGORITHM, we are ready to solve equations (1.1) and (1.2). This is described in OUTER-AGE ALGORITHM which will compute an approximation for the streamfunction ψ and the vorticity ω .

Algorithm 1 (INNER-AGE ALGORITHM)

Given: β_{ij} , $\hat{\beta}_{ij}$, μ_{ij} , $\hat{\mu}_{ij}$, f_{ij} , Re , ϵ_1 , q , m , r ,
 ϵ and ω_{ij}^{old} , This algorithm computes ω_{ij}^{new}

$p=0$

$$\omega_{ij}^{(p)} = \omega_{ij}^{old}$$

repeat

step $\frac{1}{4}$: Compute $\omega_{ij}^{(p+1/4)}$
 by using equation (3.14), (3.15), (3.16), (3.17), (3.18), (3.19),(3.20)

step $\frac{1}{2}$: Compute $\omega_{ij}^{(p+1/2)}$
 by using equation (3.22), (3.23), (3.24), (3.25)

step $\frac{3}{4}$: Compute $\omega_{ij}^{(p+3/4)}$
 by using equation (3.27), (3.28), (3.29), (3.30)

step 1: Compute $\omega_{ij}^{(p+1)}$
 by using equation (3.32), (3.33), (3.34), (3.35), (3.36), (3.37)

step 2: Compute $\tau = \max_{i,j} \{ |\omega_{ij}^{(p+1)} - \omega_{ij}^{(p)}| \}$ and set $p = p + 1$

until ($\tau < \epsilon$)

$$\omega_{ij}^{(new)} = \omega_{ij}^{(p)}$$

Algorithm 2 (OUTER-AGE ALGORITHM)

Given:

- problem parameters: Re , ϵ_1 , q
- acceleration-parameter: r
- mesh-size: m
- inner-convergence-criterion: ϵ
- outer-convergence criterion: δ

This algorithm computes an approximation for ψ and ω

Set $k = 0$ and $h = \frac{1}{m+1}$

Set $\psi_{ij}^{(k)} = 0$ and $\omega_{ij}^{(k)} = 0$ as initial approximations

Compute f_{ij} using equation (3.1)

repeat

Compute $\psi_{ij}^{(k+1)}$ using INNER-AGE ALGORITHM

[Here, $Re = 0$, $\psi_{ij}^{(k)}$ replaces ω_{ij}^{old} , $\psi_{ij}^{(k+1)}$ replaces ω_{ij}^{new} , $f_{ij} = h^2 \omega_{ij}^{(k)}$]

Compute $\tau = \max_{i,j} \{ |\psi_{ij}^{(k+1)} - \psi_{ij}^{(k)}|, |\omega_{ij}^{(k-1)} - \omega_{ij}^{(k)}| \}$ (do this step if $k > 0$)

Compute $\tilde{A}_{ij}^{(k+1)}$ using equation (2.4)

Compute $\beta_{ij}, \hat{\beta}_{ij}, \mu_{ij}, \hat{\mu}_{ij}$ using equation (3.2, 3.3, 3.4, 3.5)

Compute $\omega_{ij}^{(k+1)}$ using INNER-AGE ALGORITHM

Compute $\tau = \max_{i,j} \{ |\psi_{ij}^{(k+1)} - \psi_{ij}^{(k)}|, |\omega_{ij}^{(k+1)} - \omega_{ij}^{(k)}| \}$ and set $k = k + 1$

until ($\tau < \delta$)

$$\omega_{ij}^{(new)} = \omega_{ij}^{(p)}$$

5. NUMERICAL EXAMPLES. This section presents the results of numerical experiment with the (AGE) iterative algorithm described in section OUTER-AGE ALGORITHM. Specifically, we consider one example with known exact solution. This example has been studied in [8, 15]. For

this section, the region Ω is the unit square $0 < x < 1$, $0 < y < 1$ and the exact solution is

$$\begin{aligned}\psi^*(x, y) &= x^2(x-1)^2y^2(y-1)^2, \\ \omega^*(x, y) &= -\Delta\psi^*(x, y).\end{aligned}$$

Example 1:

We consider the following Ladyzhenskaya-type equations

$$\begin{aligned}\Delta^2\psi &= -w && \text{in } \Omega, \\ \Delta(A(\psi)w) + Re(\psi_x w_y - \psi_y w_x) &= -g && \text{on } \partial\Omega,\end{aligned}$$

subject to the boundary conditions

$$\begin{aligned}(x, 0) = \psi(x, 1) = w(x, 0) = w(x, 1) &= 0, && 0 \leq x \leq 1, \\ \psi(0, y) = \psi(1, y) = w(0, y) = w(1, y) &= 0, && 0 \leq y \leq 1,\end{aligned}$$

where the function g is defined as

$$g = \Delta(\tilde{A}(\psi^*) \Delta\psi^*) - Re(\psi_y^* \Delta\psi_x^* - \psi_x^* \Delta\psi_y^*).$$

The value of the Reynolds number is $Re = 50$ with the following parameters $\epsilon_1 = 10^{-20}$, $m = 29$, $h = \frac{1}{30}$, $q = 4$, and $r = 0.8$. The termination criteria for the outer and inner iteration, i.e., δ and ϵ are chosen as $\delta = 10^{-5}$, $\epsilon = 10^{-13}$. the number of iterations required to attain convergence is 2. The numbers of inner iterations required for the first outer iteration are 1, 489. The numbers of inner iterations required for the second outer iteration are 436, 0. Table(5.1) and Table(5.3) display the values of the exact solution ψ^* and the computed values of the streamfunction ψ^h . Table(5.2) and Table(5.4) display the values of the exact solution ω^* and the computed values of the vorticity ω^h . A quick comparison between Table(5.1) Table(5.3) shows an agreement. Similarly, Table(5.2) and Table(5.4) also shows an agreement. The values in Table(5.3) and Table(5.4) are good approximations to the exact solution. Figure(5.1(a)) and Figure(5.1(c)) show the contours for the exact solution ψ^* and the computed solution ψ^h . Figure(5.1(b)) and figure(5.1(d)) show the contours for the exact solution ω^* and the computed solution ω^h . From Figure(5.1), we can see a good agreement between each corresponding graphs.

TABLE 5.1
Exact values of ψ^* at (x, y) where $x, y = 0.1, 0.3, 0.5, 0.7, 0.9$

ψ^*	.962361E-02	.249272E-01	.306563E-01	.249272E-01	.962361E-02
	.249272E-01	.645668E-01	.794062E-01	.645668E-01	.249272E-01
	.306563E-01	.794062E-01	.976563E-01	.794063E-01	.306563E-01
	.249272E-01	.645668E-01	.794063E-01	.645668E-01	.249272E-01
	.962361E-02	.249272E-01	.306563E-01	.249272E-01	.962361E-02

TABLE 5.2
Exact values of ω^* at (x, y) where $x, y = 0.1, 0.3, 0.5, 0.7, 0.9$

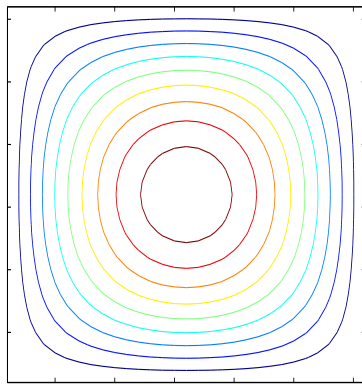
ω^*	.211896E+00	.521640E+00	.631800E+00	.521640E+00	.211896E+00
	.521640E+00	.128066E+01	.154980E+01	.128066E+01	.521640E+00
	.631800E+00	.154980E+01	.187500E+01	.154980E+01	.631800E+00
	.521640E+00	.128066E+01	.154980E+01	.128066E+01	.521640E+00
	.211896E+00	.521640E+00	.631800E+00	.521640E+00	.211896E+00

TABLE 5.3
 Computed values of ψ^h at (x, y) where $x, y = 0.1, 0.3, 0.5, 0.7, 0.9$

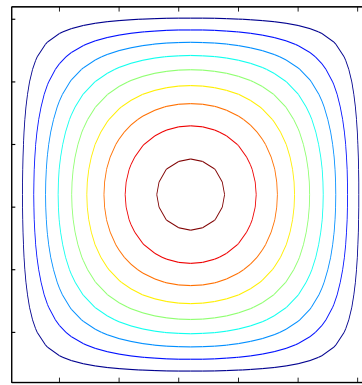
ψ^h	.963875E-02	.248545E-01	.307007E-01	.250736E-01	.963875E-02
	.250736E-01	.646559E-01	.795136E-01	.646559E-01	.248545E-01
	.307007E-01	.795136E-01	.977855E-01	.795136E-01	.307007E-01
	.248545E-01	.646559E-01	.795136E-01	.646559E-01	.250736E-01
	.963875E-02	.250736E-01	.307007E-01	.248545E-01	.963875E-02

TABLE 5.4
 Exact values of ω^h at (x, y) where $x, y = 0.1, 0.3, 0.5, 0.7, 0.9$

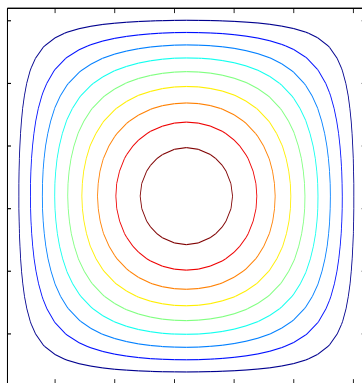
ω^h	.212004E+00	.498832E+00	.632100E+00	.544952E+00	.212004E+00
	.544952E+00	.128125E+01	.155050E+01	.128125E+01	.498832E+00
	.632100E+00	.155050E+01	.187583E+01	.155050E+01	.632100E+00
	.498832E+00	.128125E+01	.155050E+01	.128125E+01	.544952E+00
	.212004E+00	.544952E+00	.632100E+00	.498832E+00	.212004E+00



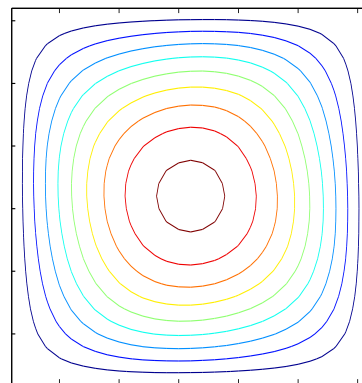
(a) Contours of the exact solution ψ^*



(b) Contours of the exact solution ω^*



(c) Contours of the computed solution ψ^h



(d) Contours of the computed solution ω^h

FIG. 5.1. Contours of the exact and computed solutions

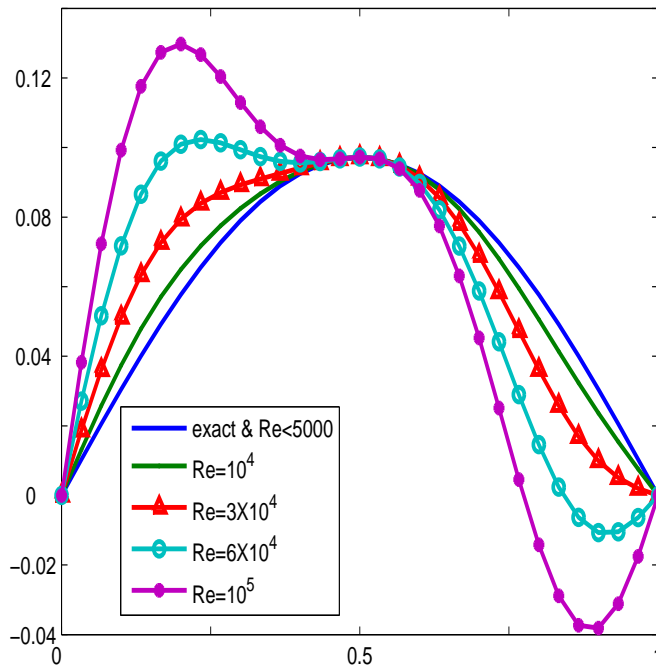


FIG. 5.2. ψ^h -streamfunction lines at different values of the Reynolds numbers through the horizontal line $y = 0.5$.

Example 2:

We consider the same problem in Example(1) with the following parameters:

$$\begin{aligned} \epsilon_1 &= 10^{-3}, q = 4, m = 29, r = 0.8, \\ \epsilon &= 10^{-5}, \delta = 10^{-13}, h = \frac{1}{30}. \end{aligned}$$

We compute an approximate solution for $Re = 1, 10, 10^2, 10^3, 5 \times 10^3, 10^4, 3 \times 10^4, 6 \times 10^4, 10^5$. Figure(5.2) displays the plot of the streamfunction along the vertical line $x = \frac{1}{2}$ passing through the point $(0.5, 0.5)$ with the above values for Reynolds numbers. Also, the numerical programs were performed for a series of different values of the Reynolds numbers between 1 and 1000. Each time, we evaluate the difference between the exact solution ψ^* and the computed solution. Then, we plot the graph in Figure(5.3). The horizontal axis of the graph represents $\log_{10}(Re)$ and the vertical axis represents $\|\psi^* - \psi^{computed}\|_{L_2}$. We can see more clearly the fact that the difference in the discrete norm increases as Re increases.

Example 3:

We conducted convergence tests to obtained error estimates and assess the order of accuracy. We solve the same problem in Example (1) with different mesh size h . The parameters of the problem are:

$$\epsilon_1 = 10^{-20}, q = 4, r = 0.8, Re = 1.0.$$

In Table (5.5) we show the discrete L_2 norm $\|\psi^* - \psi^h\|_{L_2}$ where ψ^h denotes the computational solution on an $m \times m$ grid ($h = \frac{1}{m+1}$). The convergence rates are computed using the information on two successive meshes.

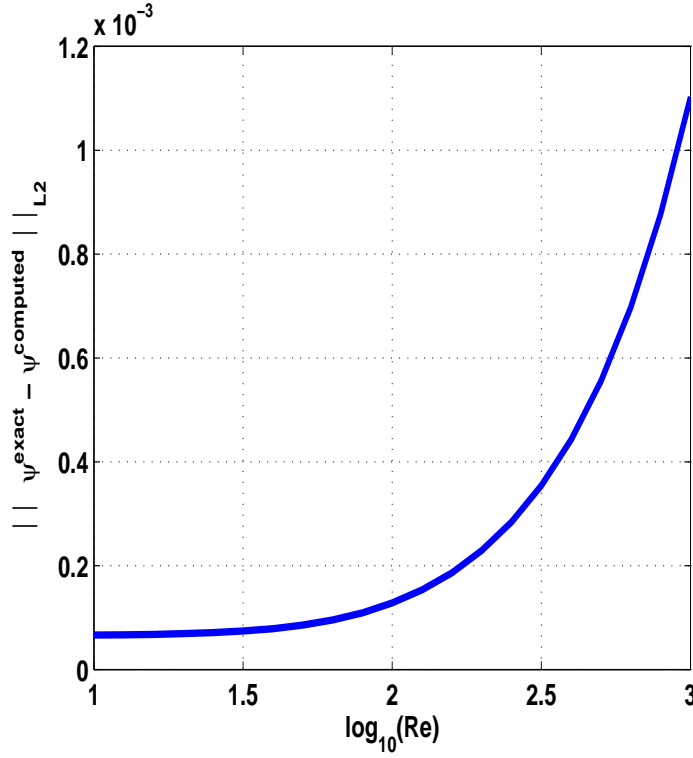


FIG. 5.3. Difference between the exact solution ψ^* and the computed solution ψ^h .vs. $\log_{10}(\text{Re})$.

TABLE 5.5
Error estimate and order of convergence

m	h	$\ \psi^* - \psi^h\ _{L_2}$	order of convergence
9	$\frac{1}{10}$	1.9647844e-004	
13	$\frac{1}{14}$	1.4015979e-004	1.0038
19	$\frac{1}{20}$	9.8045095e-005	1.0019
23	$\frac{1}{24}$	8.1689733e-005	1.0009
29	$\frac{1}{30}$	6.5346024e-005	1.0003

Acknowledgements

This research work was undertaken while the first author was on sabbatical leave from King Fahd University of Petroleum and Minerals. The first author wishes to express his gratitude to the University for providing the financial support while on research attachment at Univesiti Tenaga Nasional, Malaysia. Also he would like to thank M.S. Sahimi for introducing him to the subject.

REFERENCES

- [1] Q. Du, M. D. Gunzburger, and L. Steven Hou. Analysis and finite element approximation of optimal control problems for a Ladyzhenskaya model for stationary, incompressible, viscous flows. *J. Comput. Appl. Math.*, 61(3):323–343, 1995.
- [2] Q. Du and M. D. Gunzburger. Finite-element approximations of a Ladyzhenskaya model for stationary incompressible viscous flow. *SIAM J. Numer. Anal.*, 27(1):1–19, 1990.
- [3] Q. Du and M. D. Gunzburger. Analysis of a Ladyzhenskaya model for incompressible viscous flow. *J. Math. Anal. Appl.*, 155(1):21–45, 1991.
- [4] D.J. Evans and M.S. Sahimi. The alternating group explicit (AGE) iterative method for solving parabolic equations. I: 2-dimensional problems. *Int. J. Comput. Math.*, 24, No.3/4(311-341), 1988.
- [5] D.J. Evans and M.S. Sahimi. The alternating group explicit (AGE) iterative method to solve parabolic and

- hyperbolic partial differential equations. In *Annu. Rev. Numer. Fluid Mech. Heat Transfer 2*, 283-389 . Hemisphere Publishing Corporation, 1989.
- [6] D.J. Evans and M.S. Sahimi. The solution of nonlinear parabolic partial differential equations by the alternating group explicit (AGE) method. *Comput. Methods Appl. Mech. Eng.*, 84(1):15–42, 1990.
- [7] D.J. Evans and M.S. Sahimi. The AGE Solution of the biharmonic equation for the deflection of a uniformly loaded square plate. *Computer Studies Rep.*, 748(L.U.T.), 1992.
- [8] F. Fairag. Numerical computations of viscous, incompressible flow problems using a two-level finite element method. *SIAM J. Sci. Comput.*, 24(6):1919–1929, 2003.
- [9] M. Gunzburger. *Finite Element Method for Viscous Incompressible Flow : A Guide to Theory Practice and Algorithms*. Academic Press, Boston, 1989.
- [10] O. Ladyzhenskaya. *The Mathematical Theory of Viscous Incompressible Flow*. Gordon and Breach, New York, 1969.
- [11] O. Ladyzhenskaya. modification of the navier-stokes equations for large velocity gradients. *Boundary value problems of mathematical physics and related aspects of function theory II*, pages 57–69, 1970.
- [12] O. Ladyzhenskaya. new equation for the description of the viscous incompressible fluids and solvability in the large of the boundary value problems for them. *Boundary value problems of mathematical physics V*, pages 95–118, 1970.
- [13] W. Layton. a nonlinear subgridscale model for incompressible viscous flow problems. *SIAM. J. Sci. Comput.*, 17:347–357, 1996.
- [14] M.S. Sahimi and D.J. Evans. The numerical solution of a coupled system of elliptic equations using the AGE fractional scheme. *Int. J. Comput. Math.*, 50(1-2):65–87, 1994.
- [15] F. Schieweck. On the order of two nonconforming finite element approximations of upwind type for the Navier-Stokes equations. Proceeding of the international Workshop on Numerical Methods for the Navier-Stokes Equations, Heidelberg, October 25-28, 1993, series Notes on Numerical Fluid Mechanics, Vieweg-Verlag.