

* SOLUTIONS *

King Fahd University of Petroleum & Minerals
Department of Mathematical Science
STAT-211-Term052-I

Quiz #2

Section:

ID:

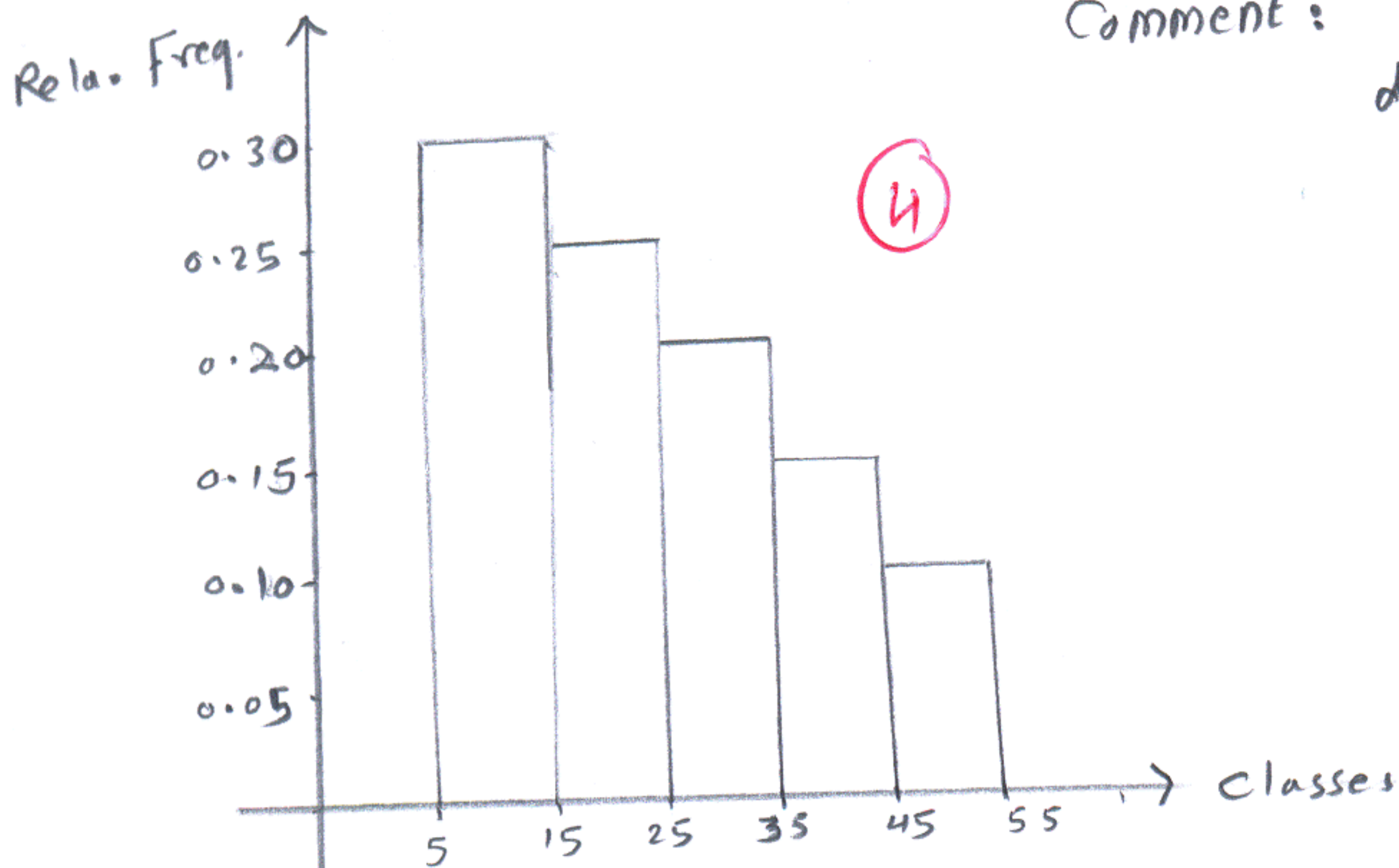
Serial:

Name: _____

Question One (5-Points)

The following table represents the grades of 20 students on a certain exam, Construct the relative frequency histogram, and comment on the shape of the distribution.

Interval	Frequency	Relative freq.
5----15	6	0.30
15----25	5	0.25
25---35	4	0.20
35---45	3	0.15
45--55	2	0.10
Total	20	



Comment: The shape of the distribution is right skewed. ①

Question Two :(5-Points)

The following observations are the daily sales in thousands of super market in S.R.

50, 55, 49, 48, 70, 61, 69, 47, 57, 65, 73, 46, 64, 53, 61, 60, 63, 59, 74

Construct a stem-and-leaf plot, and comment on the shape

Ordered Data:

46, 47, 48, 49, 50, 53, 55, 57, 59, 60, 61, 61, 63, 64, 65, 69, 70, 73, 74

stem	Leaves							
4	6	7	8	9				
5	0	3	5	7	9			
6	0	1	1	3	4	5	9	
7	0	3	4					

Comment: Most of the observations between 50 & 69, and the shape is approximately symmetric. ①

*** SOLUTIONS ***

King Fahd University of Petroleum & Minerals
Department of Mathematical Science
STAT-211-Term052-II

Quiz #2
ID:

Section:
Serial:

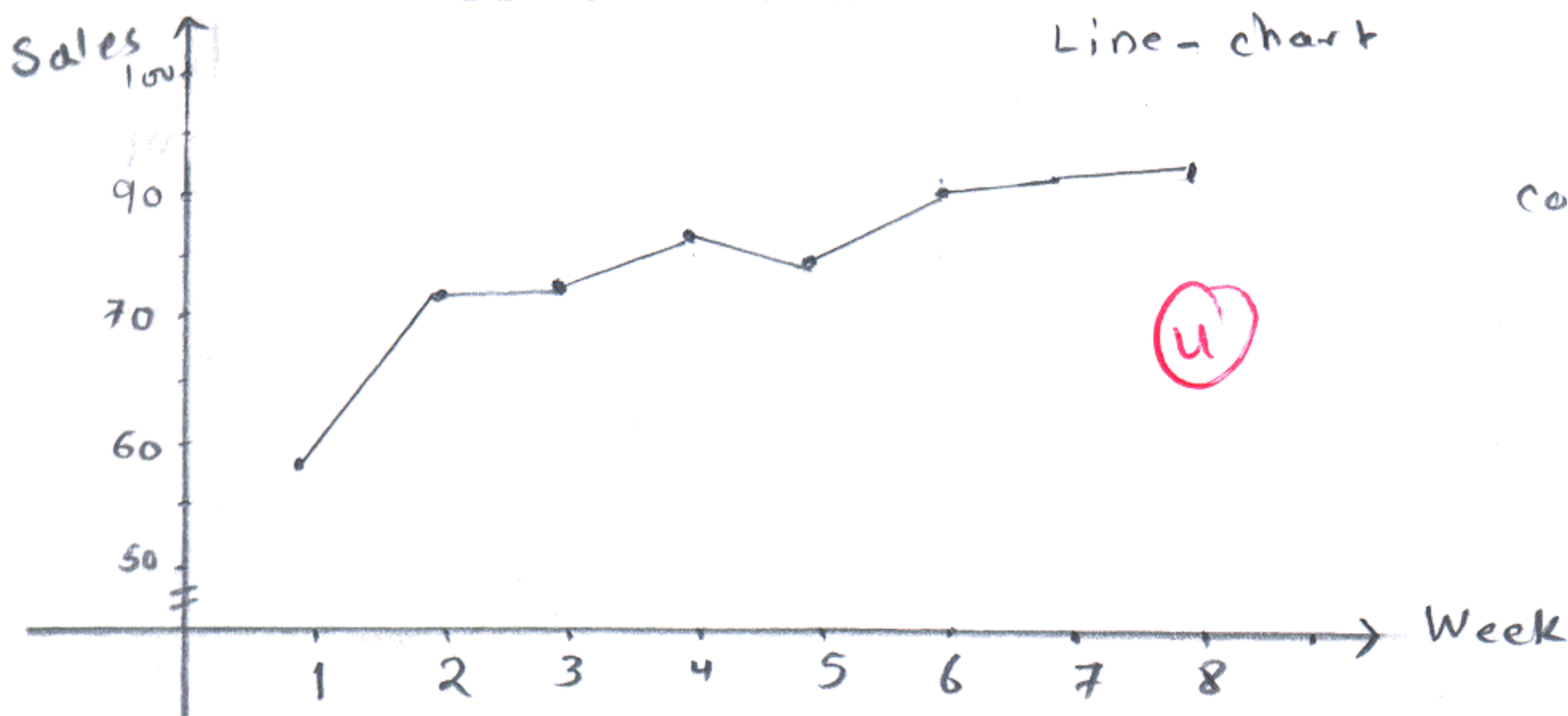
Name:

Question One (5-Points)

A study was made about the total sales (In thousands of S.R) of a big market in Al-Dammam city for 8 weeks, the results are summarized below:

Week	1	2	3	4	5	6	7	8
Total sales	58	71	72	84	80	87	88	89

Construct the appropriate graph, and write a comment about it.

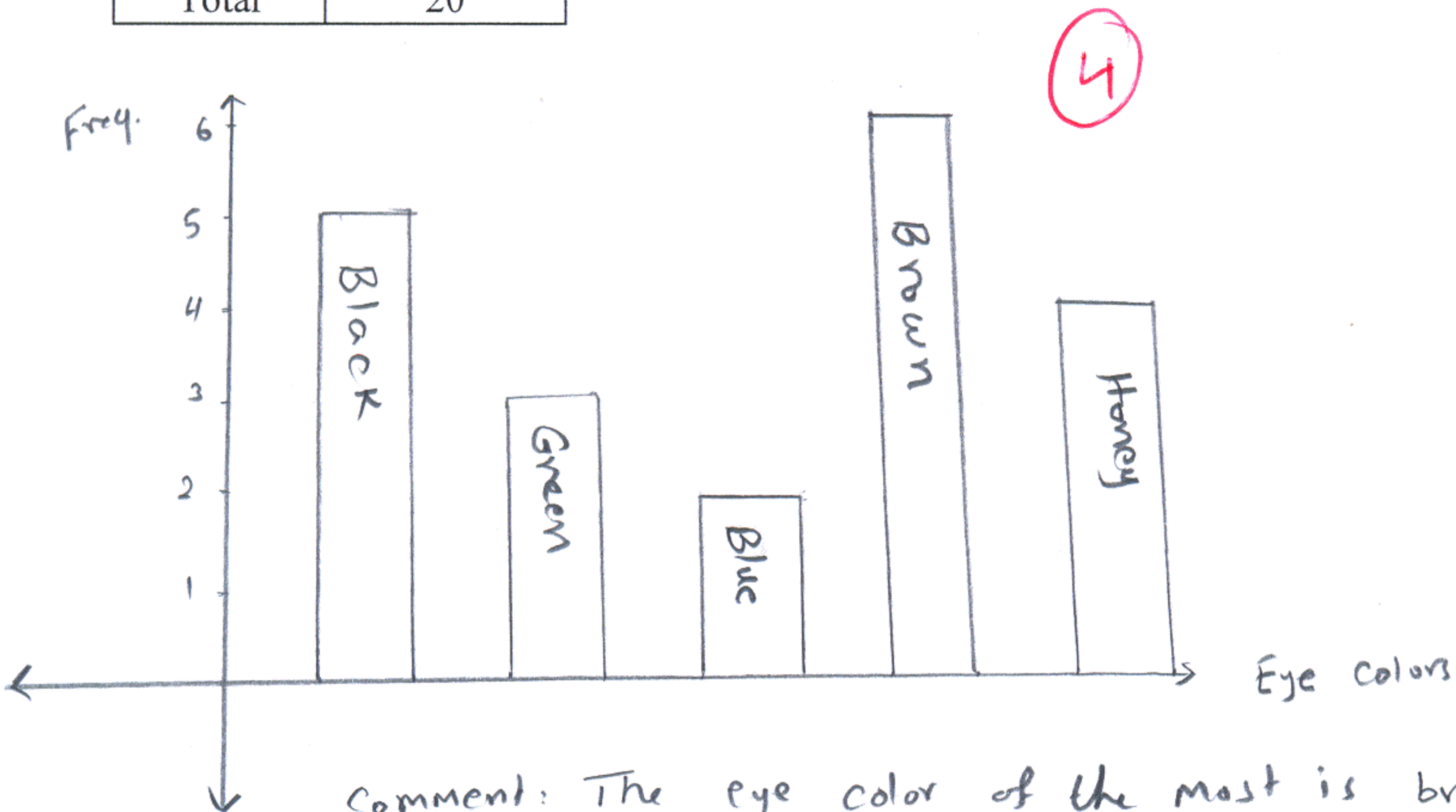


comment: There is an increasing trend.

Question Two (5-Points)

For the following table, construct the bar chart, and comment on the shape of it.

Eye colors	Frequency
Black	5
Green	3
Blue	2
Brown	6
Honey	4
Total	20



comment: The eye color of the most is brown and the lowest is blue.