

* SOLUTIONS *

King Fahd University of Petroleum & Minerals
Department of Mathematical Science
STAT-211-Term042-II

Quiz #2
ID:

Section:
Serial:

Name:

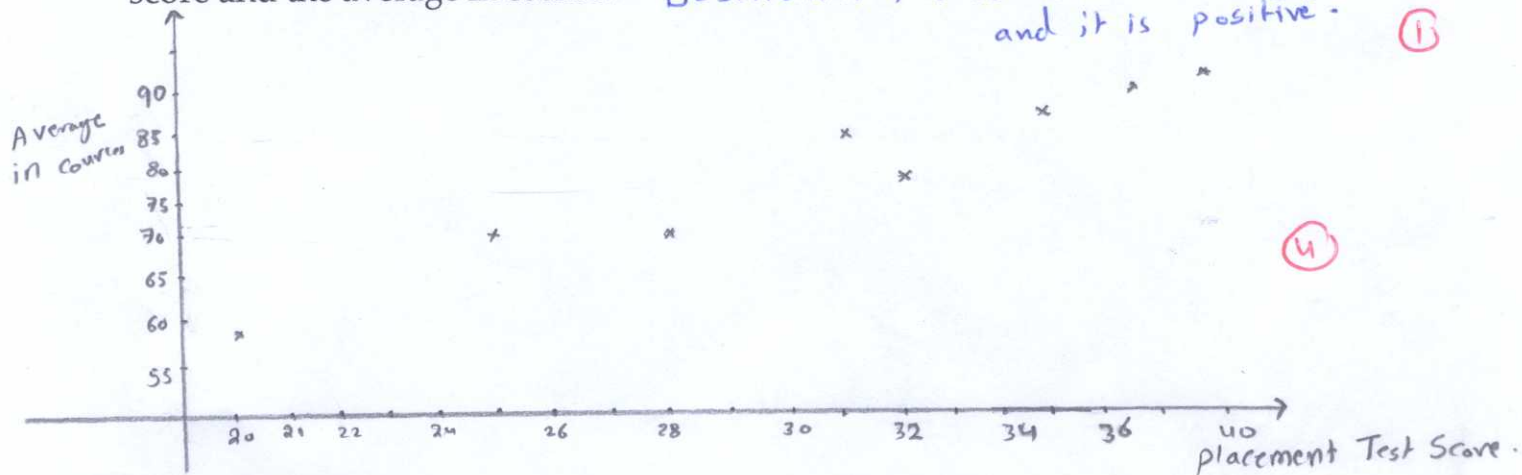
Question One (5-Points)

A study was conducted to determine whether a score on a placement test could predict how successful a student would be in a statistic course. The results for eight students are given.

Placement Test Score	20	25	28	31	32	35	37	40
Average in course	58	71	72	84	80	87	88	89

Construct a scatter diagram, and describe the relation between the placement test score and the average in course.

Description: The relation is strongly linear and it is positive. (1)



Question Two (5-Points)

For the following table, construct the A bar chart, and comment on the shape of it.

Eye colors	Frequency
Black	5
Green	3
Blue	2
Brown	6
Honey	4
Total	20

Comment: The brown color has the maximum frequency, which means the majority reported has brown eyes, where the smallest is the blue color. (1)

