

# Developing a web site

---

# Outline

---

## Introduction to Web page development

- Get started with FrontPage
- Start a new website
  - Adding pages to a web site
  - Rearranging the site structure
- Insert navigation bars
- Build a web page content
- Post pages to the Web

# What is Web Site?

---

- A Website is a collection of one or more webpages located somewhere on the Internet and has a unique domain name
- A webpage is a document made of Hypertext (images, voice and video clips, plain text, rich text,...etc.)
- Any webpage has a unique URL
- A webpage is written in special language called Hypertext Markup Language (HTML)
  - See example: Open any webpage on Internet Explorer, from Menubar select View | Source
- Some webpages are written in different languages but are similar to HTML

# Web site design

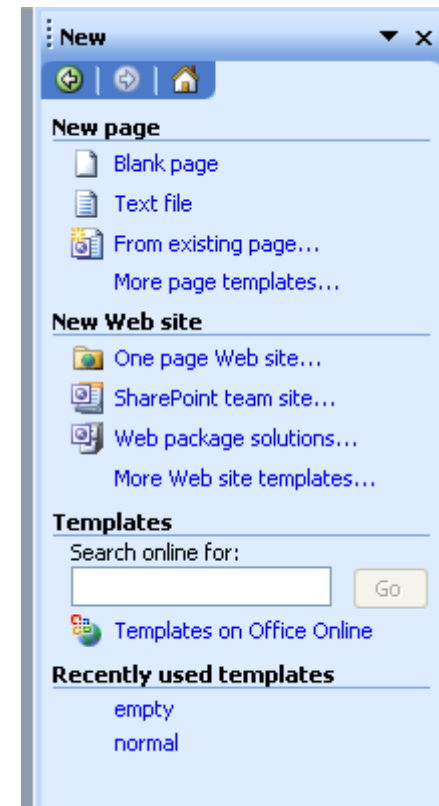
---

- You don't have to know HTML to be able to create a web page.
- Some programs allow you to design a web page like designing a Word document or a graphic document. We call it WYSIWYG (we-zee-wig) meaning: What You See Is What You Get.
- Examples of these programs: MS FrontPage, Dreamweaver, GoLive.

# Starting a new Web Site

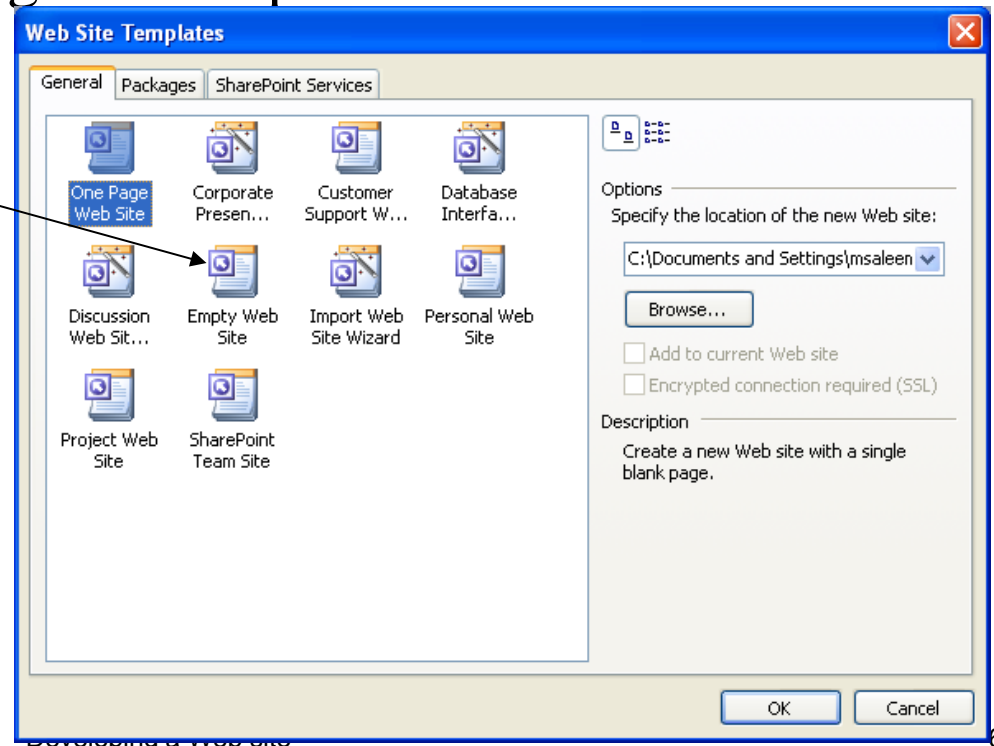
---

- View the task pane by clicking View | Task pane



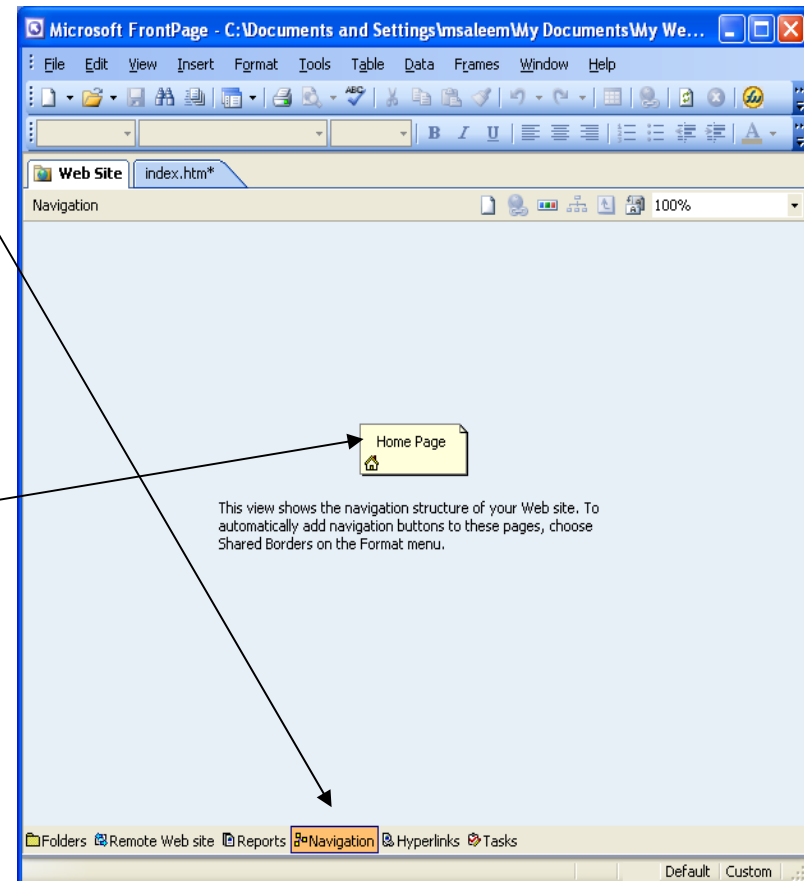
# Starting a new Web Site

- ❑ Click More Web Site Templates
- ❑ Specify where you want to store the website
- ❑ Choose Empty Web Page for simple sites



# Starting a new Web Site

- ❑ To add a home page right click in the navigation view and click New | Top page.
- ❑ A home page will be added
- ❑ To edit the home page double click the home page icon



# What is homepage?

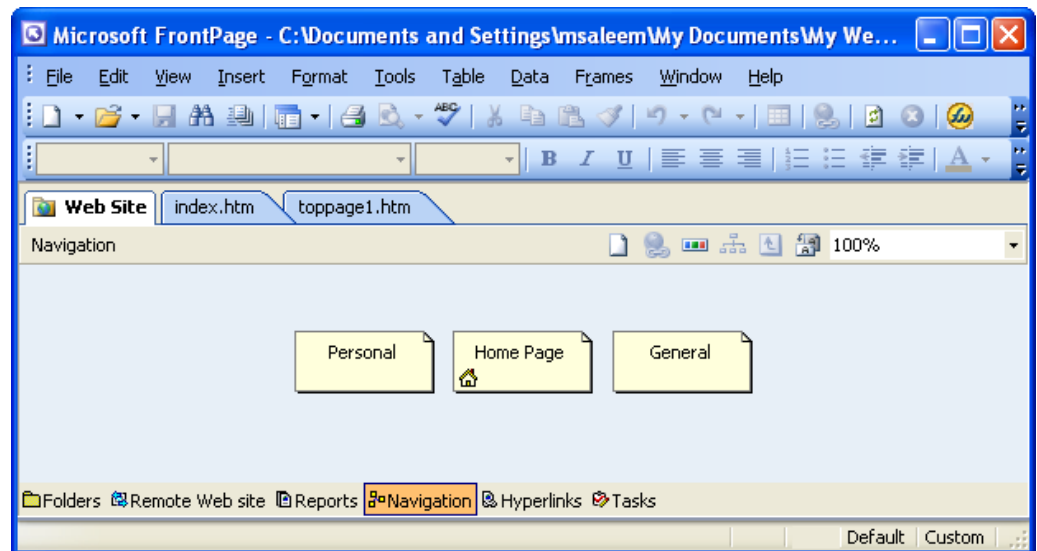
---

- A Homepage is the first page in your website.
  
- When the user enters the URL of your website in IE, the first page that will open is the Homepage.
  - For this to happen, the page must be called “Default.htm”



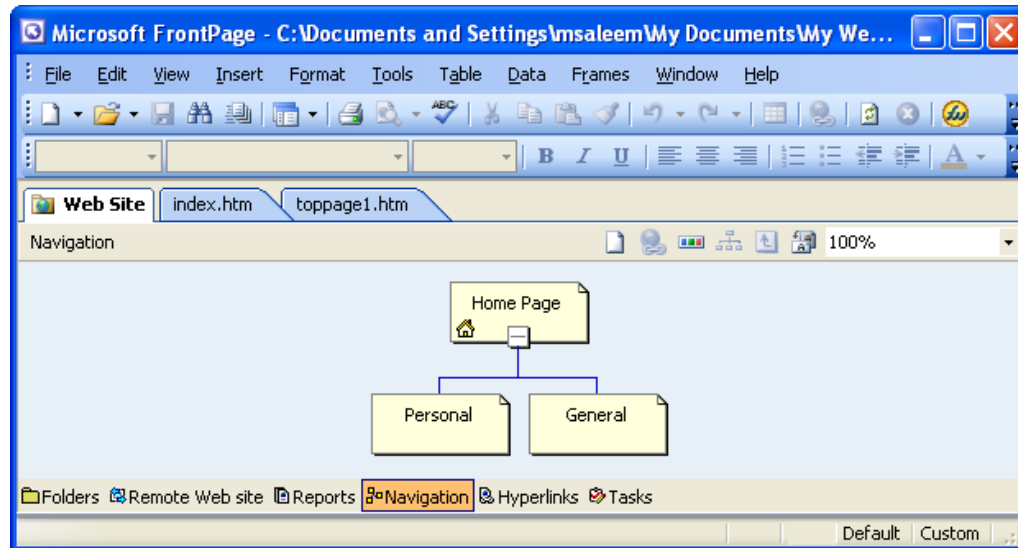
# Adding Pages to a Web site

- The first page you added as shown in the previous slide is the default homepage.
- Any further pages you add will be additional pages to your site that can be linked to the homepage.
- The figure below shows two additional pages along with the home page.



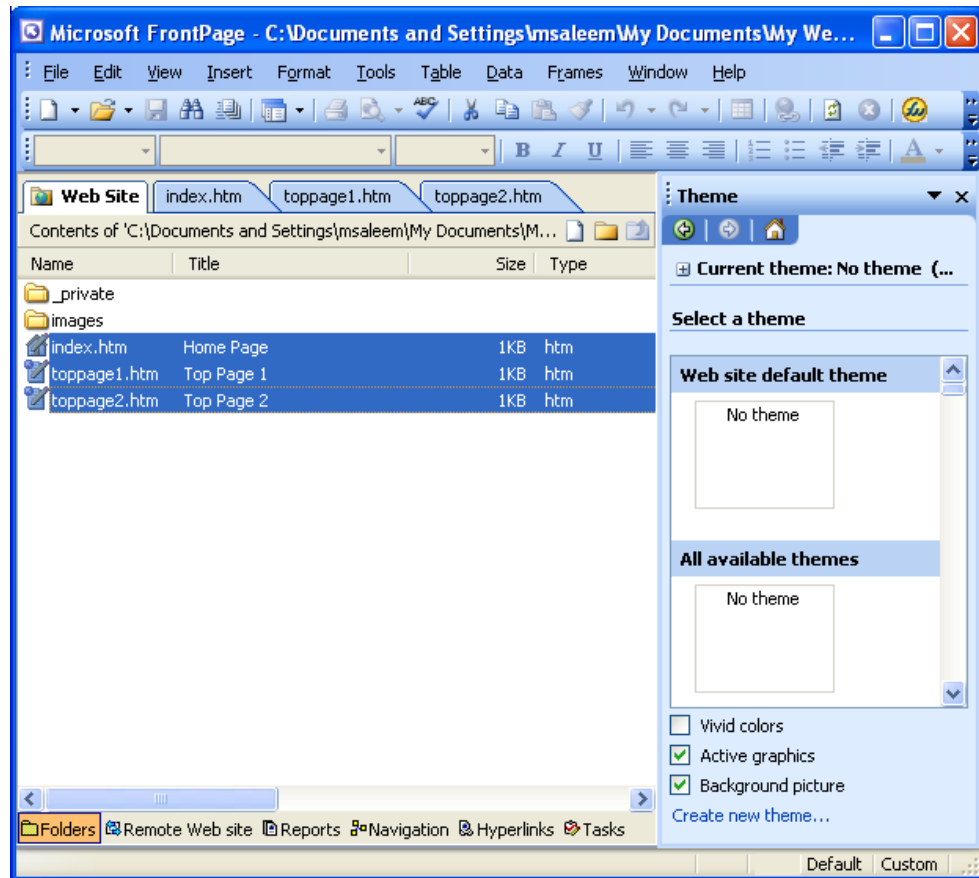
# Rearranging the Site Structure

- Rearranging the pages in a site is very simple with the FrontPage 2003.
- Just drag them according to the structure you want and FrontPage will modify the structure accordingly.



# Applying a Theme to a Website

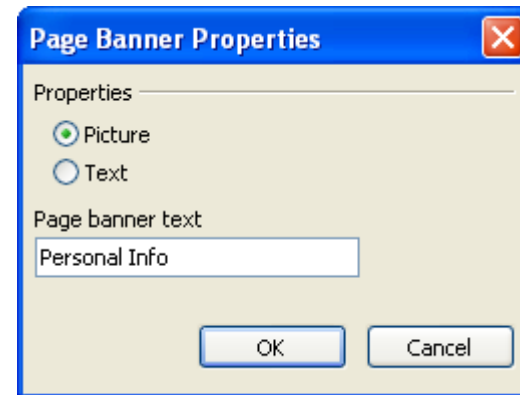
- Select all files in the folders pane.
- Choose Format | Theme



# Adding Page Banners

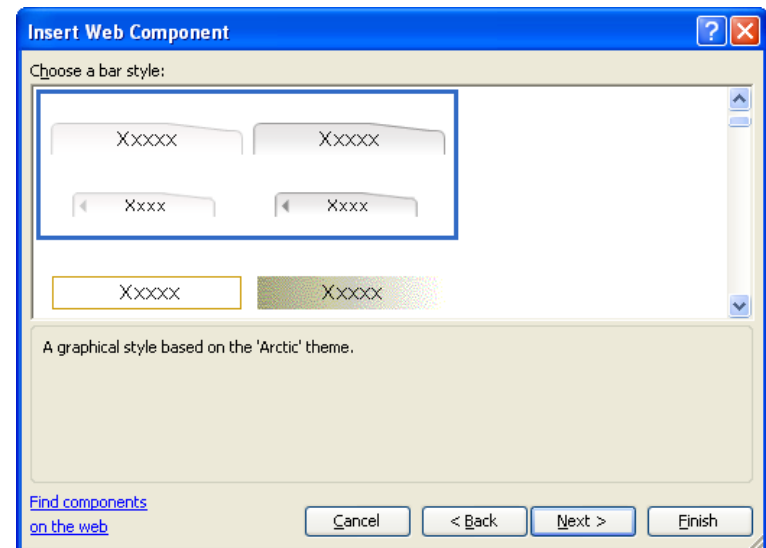
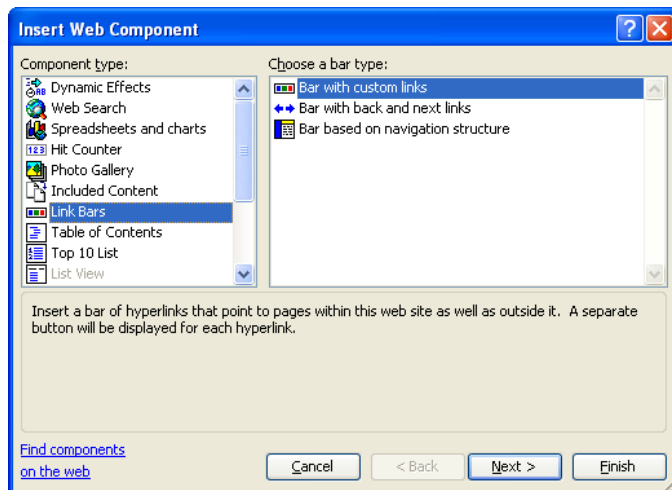
---

- ❑ Double click the page you want to add the page banner from the navigation view
- ❑ Choose Insert | Page Banner
- ❑ Repeat this for all the pages

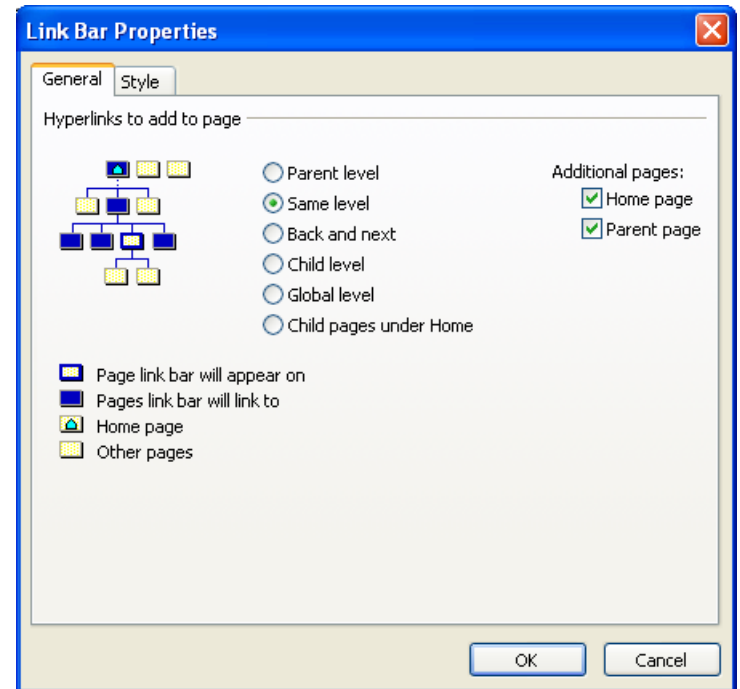
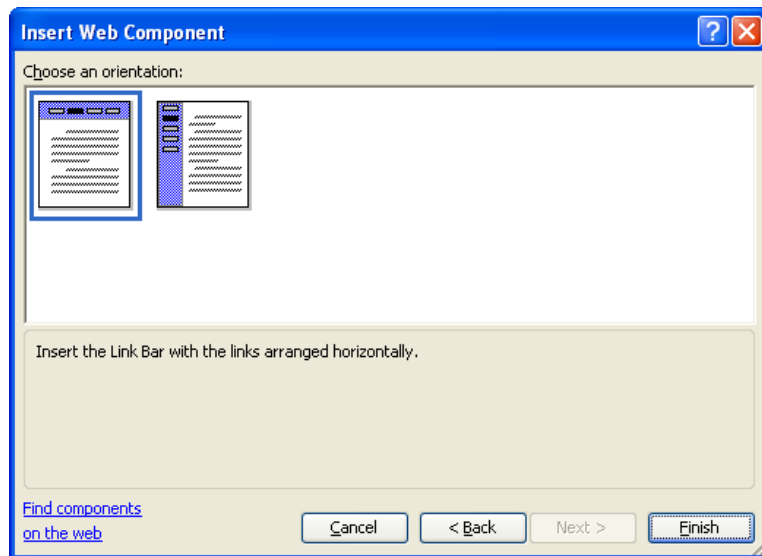


# Inserting navigation bars

- Adding navigation button to the home page
- Choose Insert | Navigation



# Inserting Navigation Bars (contd)



# Building Web Page Content

---

## Adding contents to the web page

- Same as adding contents to word document
- Making links to external web pages.
  - Apart from the automated hyperlinks that you made in the previous slide, you also can create your own links. To do so
    - Select the text you want to be linked
    - Choose Insert | Hyperlink
- Adding images to a web page.
  - Choose Insert | Picture
- Adding tables to a webpage
  - Use “Insert Table” from Toolbar
  - Or, from menubar Tables | Layout tables and cells

# Previewing Pages through a Browser

---

- The web pages you have developed by the FrontPage can be previewed by
  - Just clicking the preview mode in the FrontPage, or
  - By opening the home page by a browser of your choice, or
  - Choose File | Preview in Browser | select any browser of your choice
  
- The last option helps you preview in a browser of your choice.



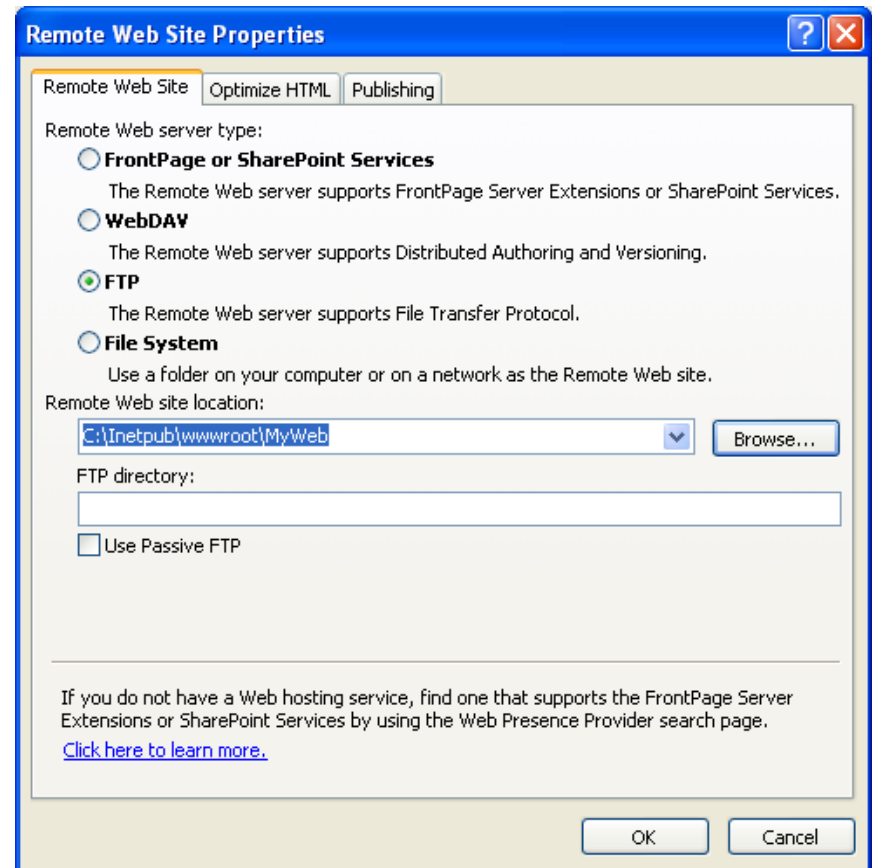
# What now?

---

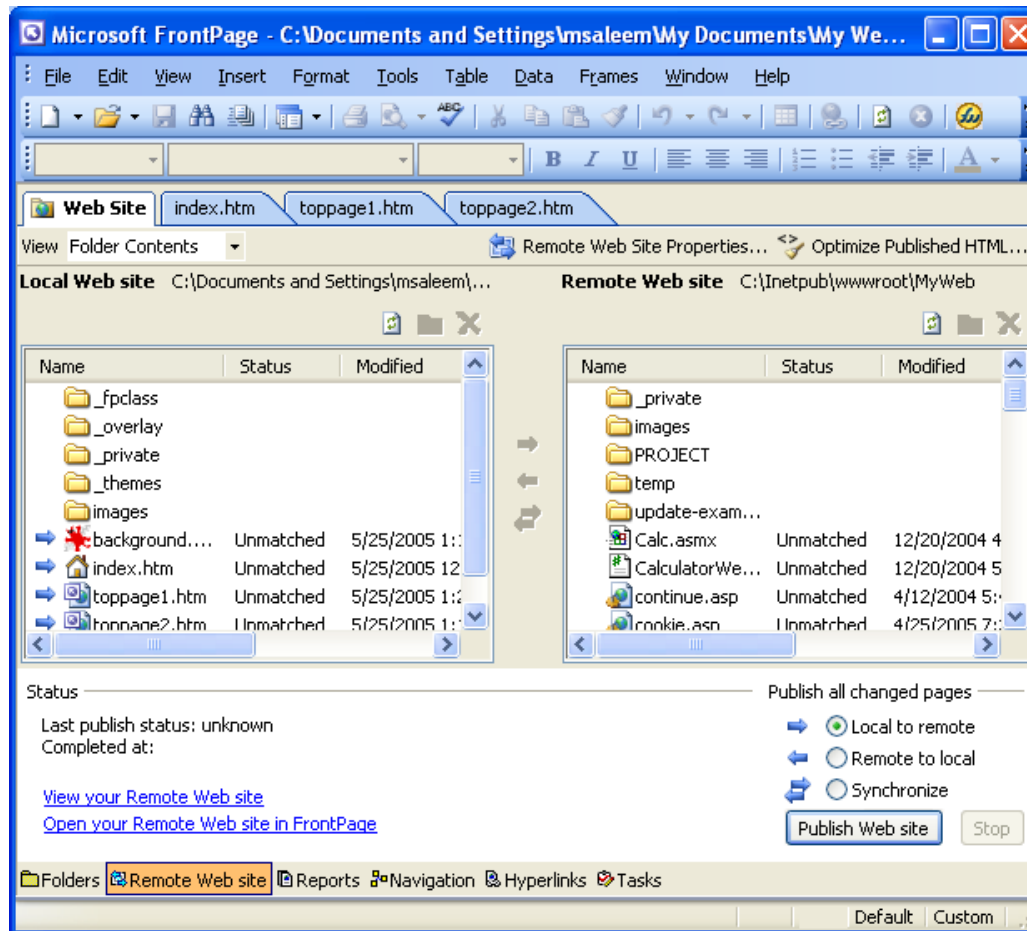
- After designing and building your website, your next step will be to publish the website
- Publishing the website means putting it to some web server on the Internet, so people can see your website from the Internet

# Publishing a Web site

- Once you have completed building your site, you can publish it on the web server as follows.
- Choose **File | Publish Site**



# Publishing a Web site



# Summary

---

- Introduction to Web page development
  - Get started with FrontPage
  - Start a new website
    - Adding pages to a web site
    - Rearranging the site structure
  - Insert navigation bars
  - Build a web page content
  - Post pages to the Web