

KING FAHD UNIVERSITY OF PETROLEUM & MINERALS
ELECTRICAL ENGINEERING DEPARTMENT

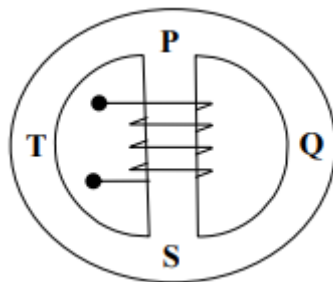
Dr. Ibrahim O. Habiballah
EE-306

Key Solution

Quiz 2 Sec.: 5 I.D.: Ser#: Name:

Q.1 . (6-points)

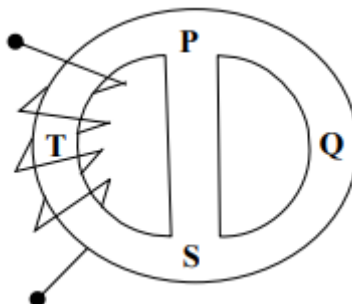
For the magnetic circuit shown below the reluctance of the central limb (PS) is 10×10^5 AT/Wb and the reluctance of the outer limbs (PTS and PQS) are same and equal to 15×10^5 AT/Wb. To produce 1.0 mWb in PS limb , the mmf to be produced by the coil is:



- a. 750 AT.
- b. 1750 AT**
- c. 1875 AT.
- d. 2500 AT.

Q.2 (4-points)

For the magnetic circuit shown below the reluctance of the central limb (PS) is 10×10^5 AT/Wb and the reluctance of the outer limbs (PTS and PQS) are same and equal to 15×10^5 AT/Wb. If a certain amount of exciting current is introduced in the coil , then the amount of flux flowing in the PTS limb is ----- the amount of flux flowing in the PQS limb .



- a. same as.
- b. larger than.**
- c. less than.