

Project:

Part 1:

For the circuit of Figure 1, use **mesh-current method** to find the following:

- a) The open circuit voltage v_{oc} between the terminals a and b.
- b) The short circuit current i_{sc} between the terminals a and b.
- c) Use an external source to calculate the Thevenin equivalent resistor R_{Th} between the terminals a-b.

Part 2:

For the circuit of Figure 2:

- a) Find the value of R_L that absorbs maximum power from the circuit.
- b) Calculate the maximum power absorbed by R_L .

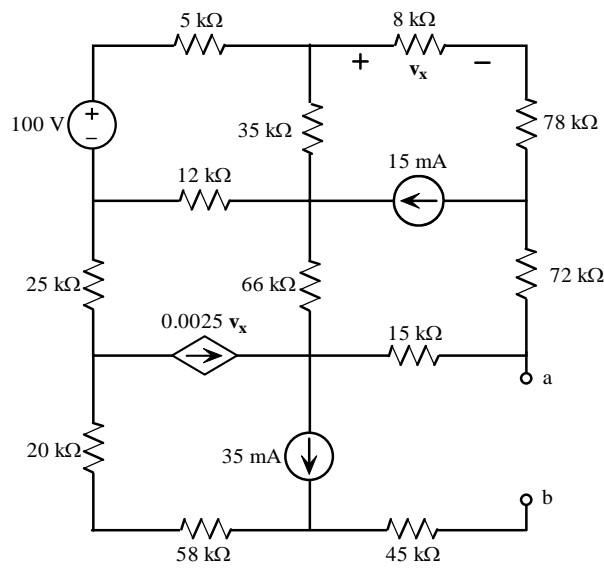


Figure 1

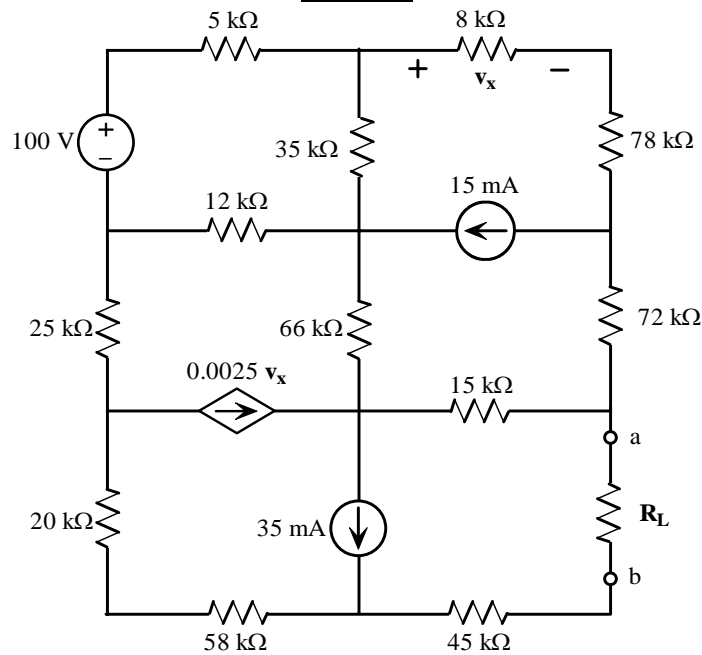


Figure 2