

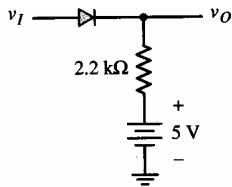
EE 203 Electronics I
Quiz # 1

Name: _____

I.D.# _____

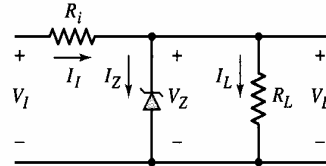
Sec.#04

Referring to the circuits shown, complete the table below assuming constant voltage drop model for forward biased diodes ($0.7V$). Use $V_{zk}=4V$, $R_i=R_L=1K\Omega$



Circuit A

v_I	v_o
-5V	
0V	
3V	
5V	
10V	



Circuit B

V_I	V_L
-5V	
-2V	
0V	
3V	
10V	