



**King Fahd University of Petroleum and Minerals**  
ELECTRICAL ENGINEERING DEPARTMENT

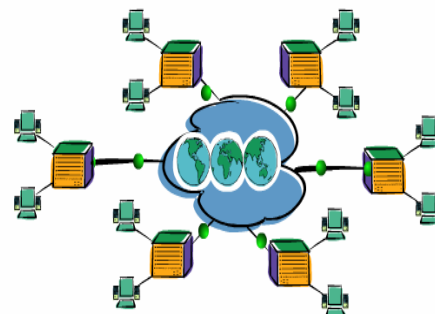
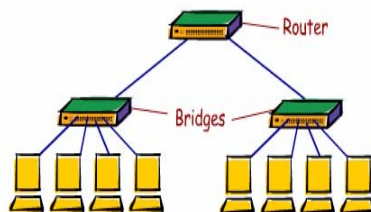
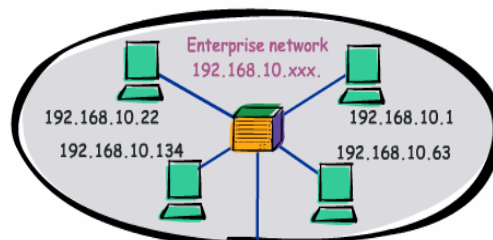
## LABORATORY MANUAL

**EE-400**

## TELECOMMUNICATIONS NETWORKS

**TERM-062**

(Updated in January 2007)



Copyright © Electrical Engineering Department, KFUPM, Saudi Arabia.

## **Preface**

A set of experiments will be carried out to demonstrate and complement the course material. Network design principles and other influential factors are emphasized throughout the lab work. A network design package (Cisco ConfigMaker) is utilized in one experiment to design simple and complex networks. Many network design architectures (peer-to-peer, client-server, point-to-point) are demonstrated and implemented. After carrying out all the experiments, the students are expected to acquire a good hands-on experience in network design, implementation, configuration and troubleshooting.