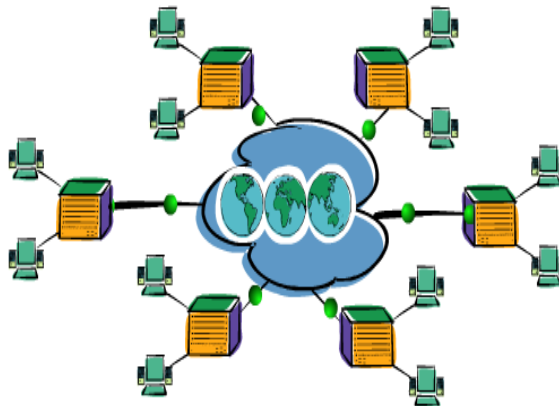




**King Fahd University of Petroleum and Minerals**  
**Department of Electrical Engineering**

**EE 400**  
**TELECOMMUNICATIONS**  
**NETWORKS**



**Laboratory Manual**

**July 2003**

## *Preface*

A set of experiments will be carried out to demonstrate and complement the course material. Network design principles and influential factors are emphasized throughout the lab work. A network design package (ConfigMaker) is utilized in two experiments to design simple and core networks. Many network design architecture (peer-to-peer, client/server, point-to-point) are demonstrated/implemented. After carrying out all the experiments, the student is expected to acquire a good hands-on experience in network design, configuration and troubleshooting.