

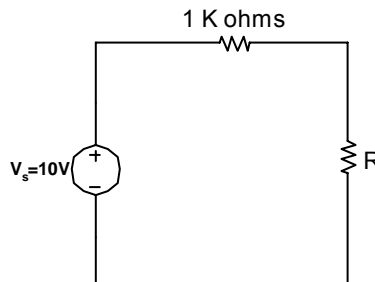
**University Diploma Program  
Electrical Engineering Technology**

**Lab Instructor: M. Ajmal Khan, Lecturer EE Dept.**

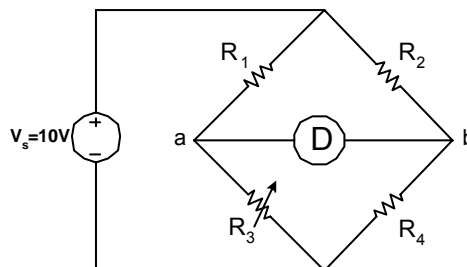
**EET 027, Lab Quiz # 1**

**Student Name:** \_\_\_\_\_ **Student ID # :** \_\_\_\_\_

1. If  $R=1$  K-ohms in the following circuit, then write the value of Voltage across  $R =$  \_\_\_\_\_ volts.



2. Following is a balanced bridge circuit,  $R_1 = 120$  ohms,  $R_2 = 350$  ohms,  $R_4 = 700$  ohms and  $R_3$  is a variable resistance, adjust  $R_3$  to make the bridge balance. Write the adjustable value of  $R_3 =$  \_\_\_\_\_ ohms.



3. Find the approximate temperature from thermocouple table corresponding to voltage of 5.160 volts. Temperature = \_\_\_\_\_ °C.
4. From thermocouple table, find approximate voltage corresponding to 263 °C. Voltage = \_\_\_\_\_ Volts.