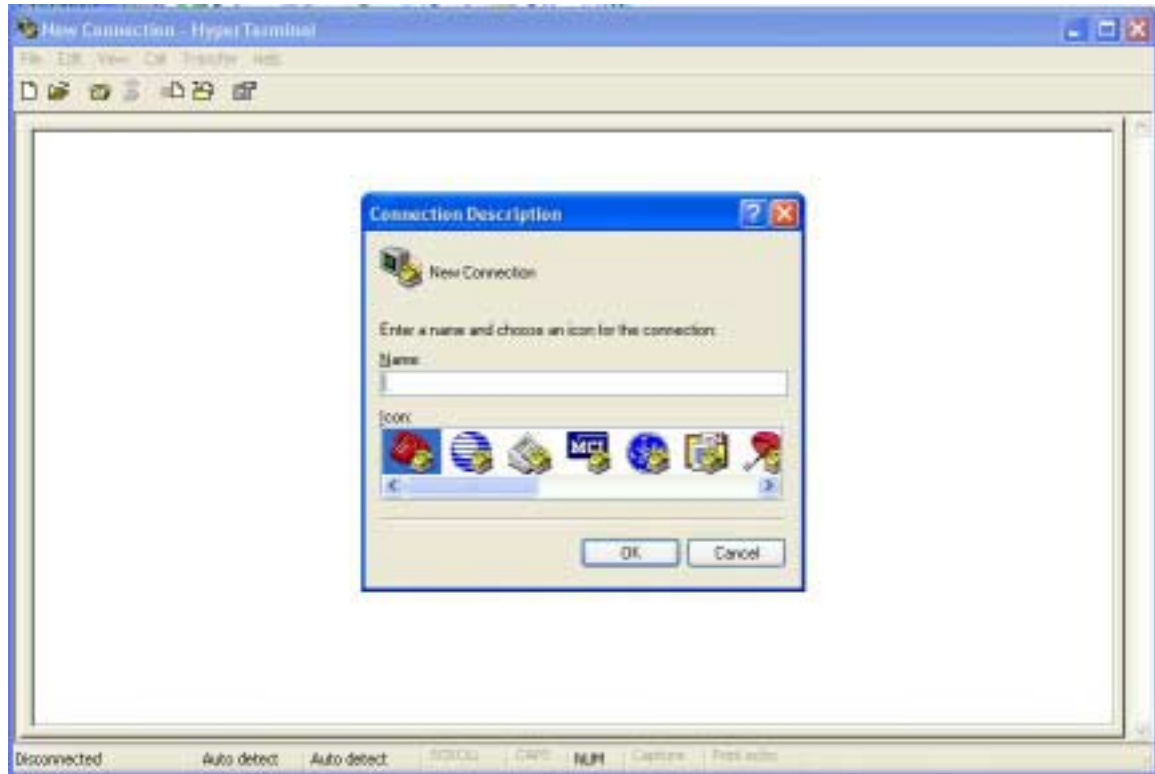


Simple Guide to Setup ISO RFID Reader

To test and interface the ISOReader OEM Module, you do not need a sophisticated μ P development system. All you need is a PC, a connection cable and a power supply for the reader.

If you are using Microsoft Windows (95/98/NT/2000...), take following steps:

1. Make sure, that your reader is RS232-interface type
2. Start HyperTerminal

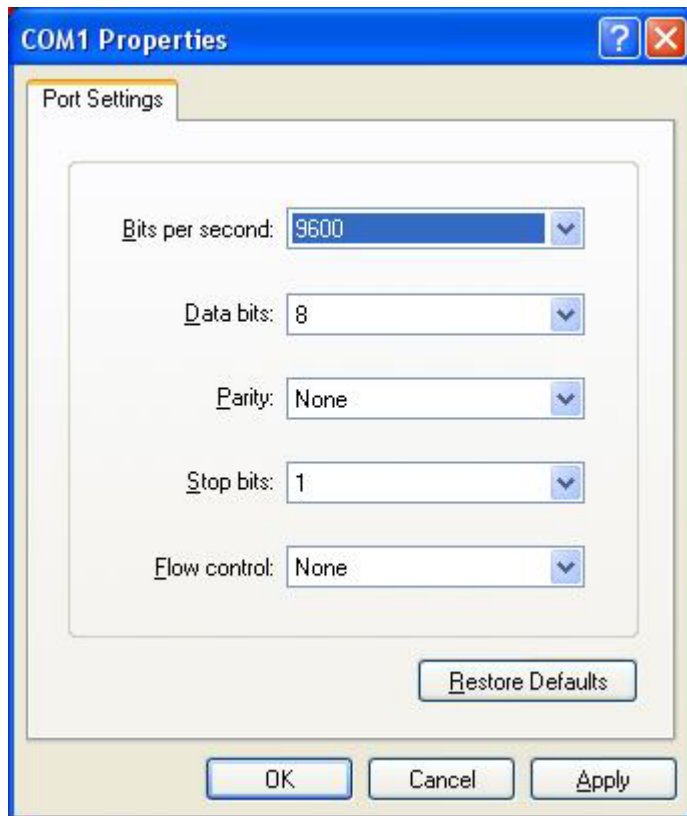


3. Create a new connection (FILE/NEW CONNECTION)
4. Enter name of connection as you like (i.e. 'ISOReader')

5. Select connect COM2 (COM1) direct connection



6. Connection setup 9600,8,n,1,no handshake



7. Connect your reader to COM2 (COM1) of the PC and apply appropriate the supply voltage. A string (i.e. "ISO Reader – 1.0") is transmitted to the PC by the reader. This string denotes the firmware provided by your reader module

8. Put a tag to your reader. Serial numbers should be displayed properly

9. Enter commands via keyboard. They should be transmitted to the reader and the reader should reply

If using an operating system different from Microsoft Windows you may use any other terminal program which is capable of receiving/transmitting via the serial port of your PC.

For continuous read of all tags

Type 'c' after the ISO Reader – 1.0 string.

Place a tag near the antenna. Tag Id will be shown on the screen automatically.

For ICODE Tag:

To set the reader to read ICODE only, enter 'OI' or 'oi' in the screen.

For continuous read of ICODE tag, enter 'c'.

To read a page, enter 'r(xx)' where xx is the block/page number
e.g.

'r01' to read block 01

Note: Detailed command can be obtained from the application note.