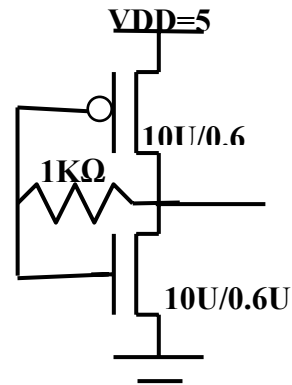


COE360 – Assignment # 3 (out of 20)
Dr. M. Elrabaa (031)

Q1) For the circuit shown, assume $V_{tn}=V_{tp}=0.8V$ and make any other reasonable assumptions you need to calculate V_o .

$$I_{Dsat_{nmos}} = 500 \mu A/\mu m, I_{Dsat_{pmos}} = 200 \mu A/\mu m$$



Solve problems 5.1, 5.4, 5.5 and 5.6 from the text book