

CIVIL ENGINEERING DEPARTMENT

CE 201 STATICS (Section 2)  
First Semester 1425 / 2004-05 (041)

Score = \_\_\_\_\_  
10

Written Quiz # 7

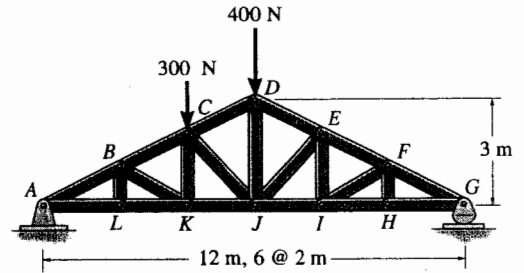
Name: Key

ID#: \_\_\_\_\_

Note: Do problem 1 by inspection. For problem 2, either solve it numerically, OR write the solution steps very clearly.

1) For the given loading, determine the zero-force members in the Pratt roof truss.

LB, BK, KC  
FH, FI, IE, EJ



2) If the maximum force that any member can support is 8 kN in tension and 6 kN in compression, determine the maximum force  $P$  that can be supported at joint  $D$ .

See H.W. # 8 Soln.

« Prob. # 6-17, p. 271 »

